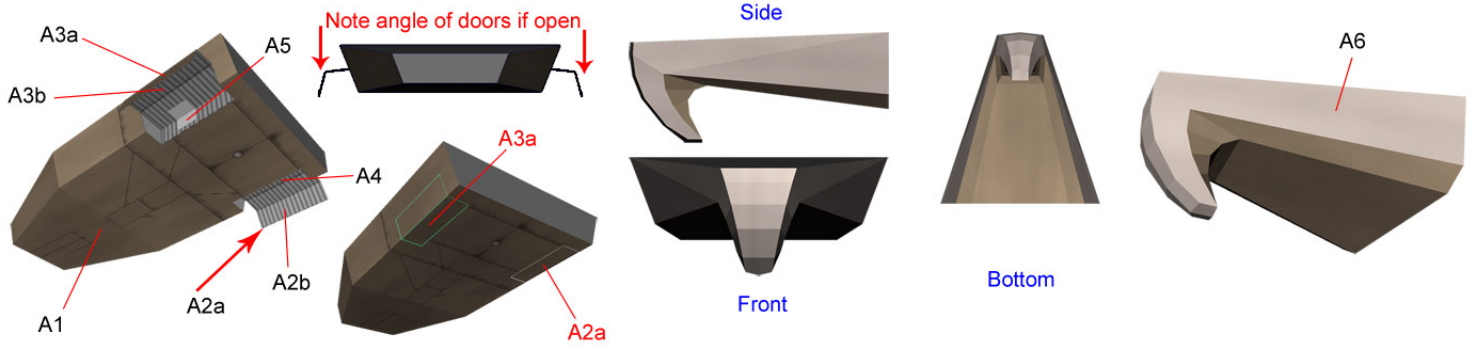


BUCK
ROGERS
IN THE 25TH CENTURY

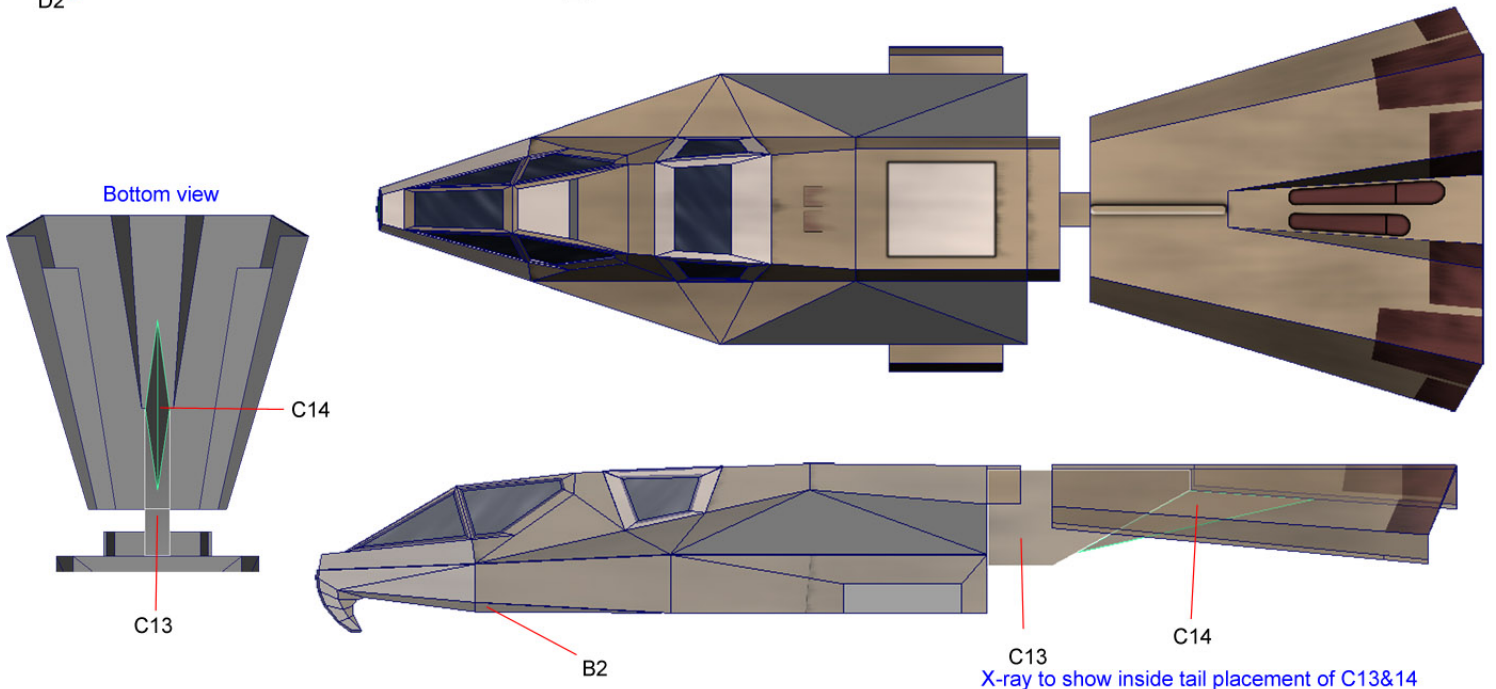
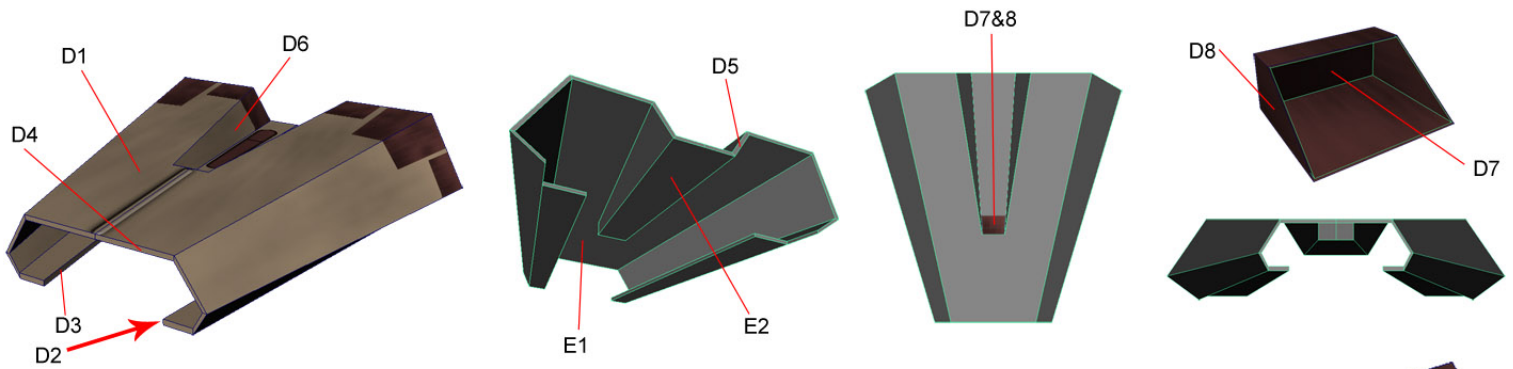
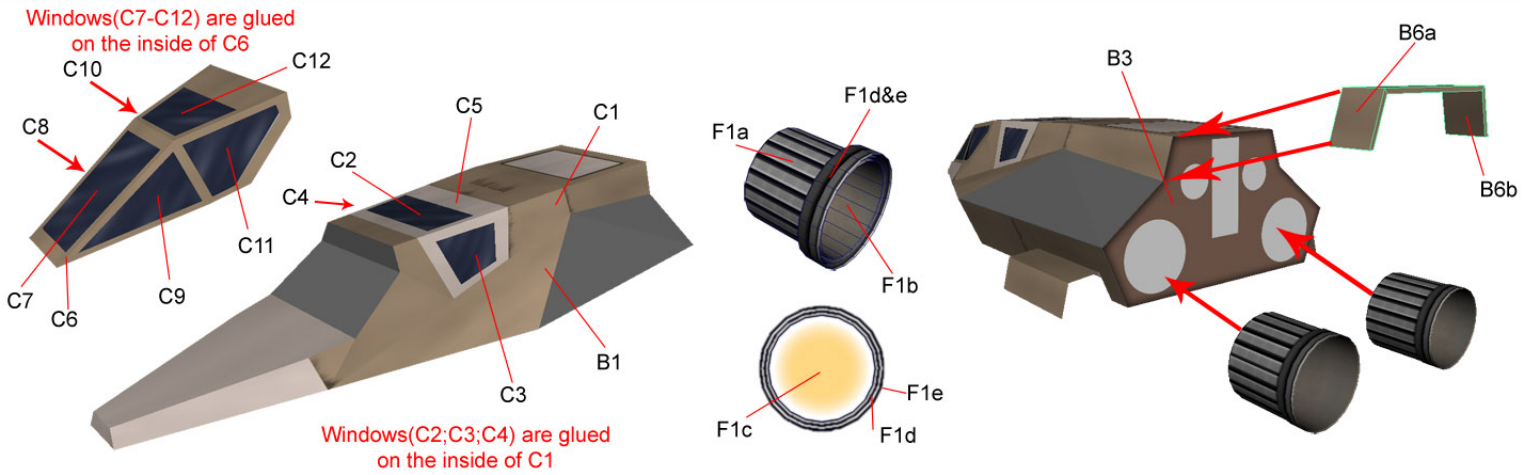
WAR HAWK

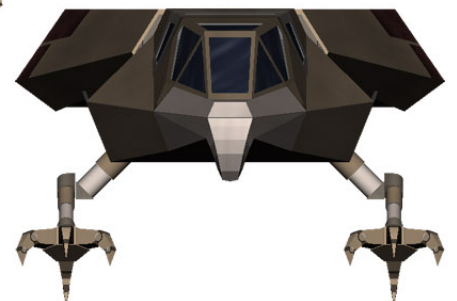
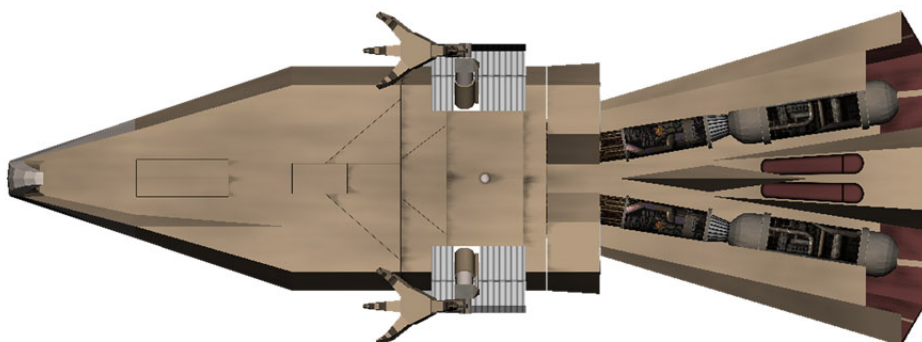
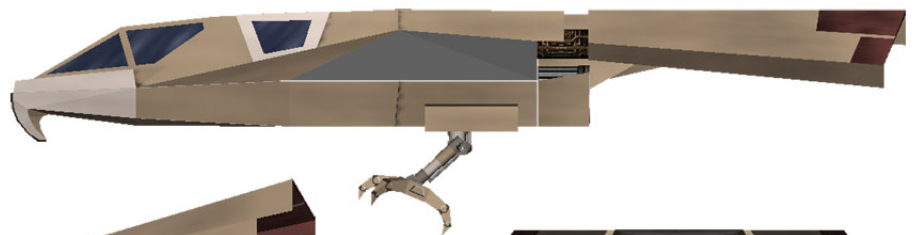
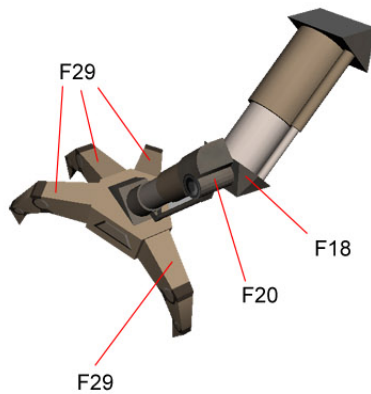
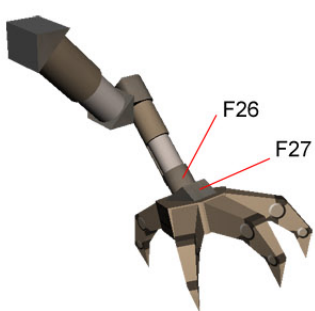
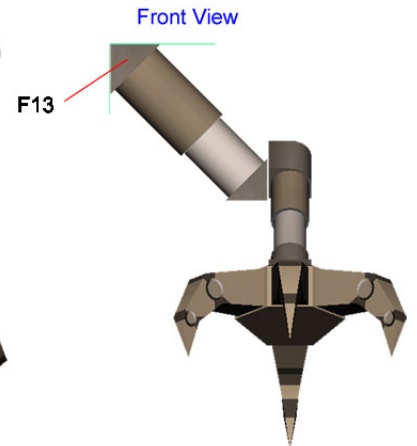
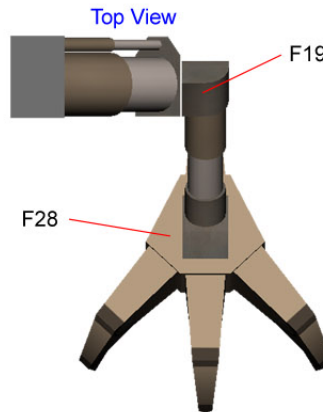
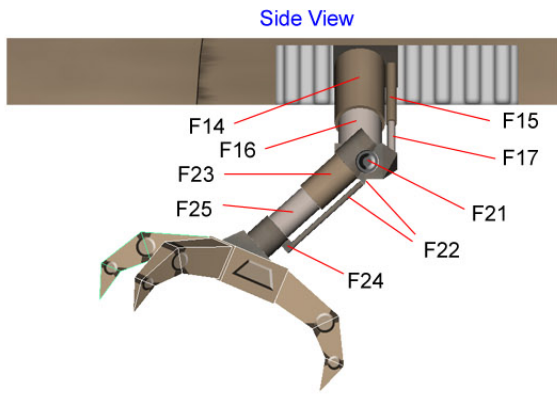
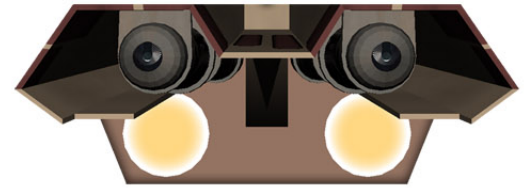
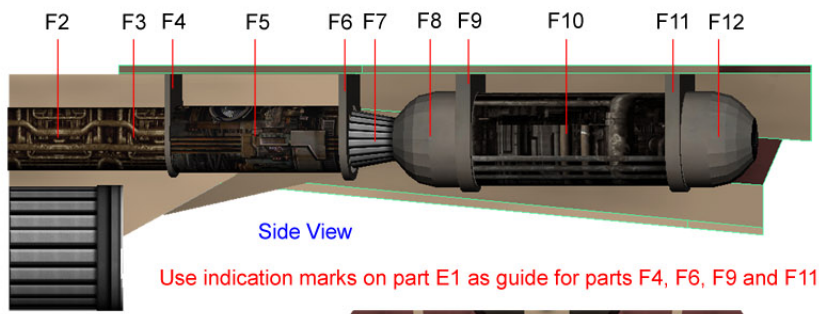
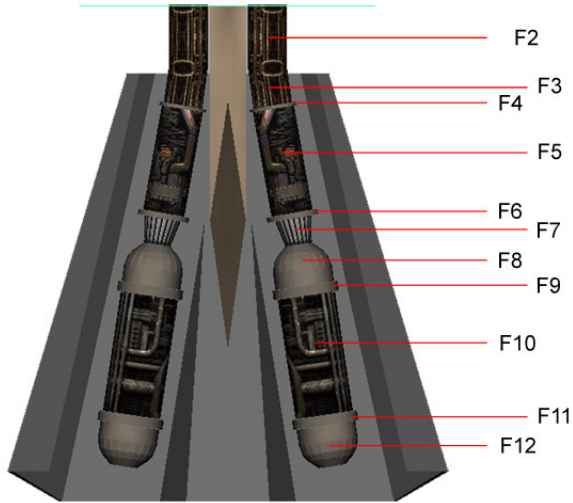


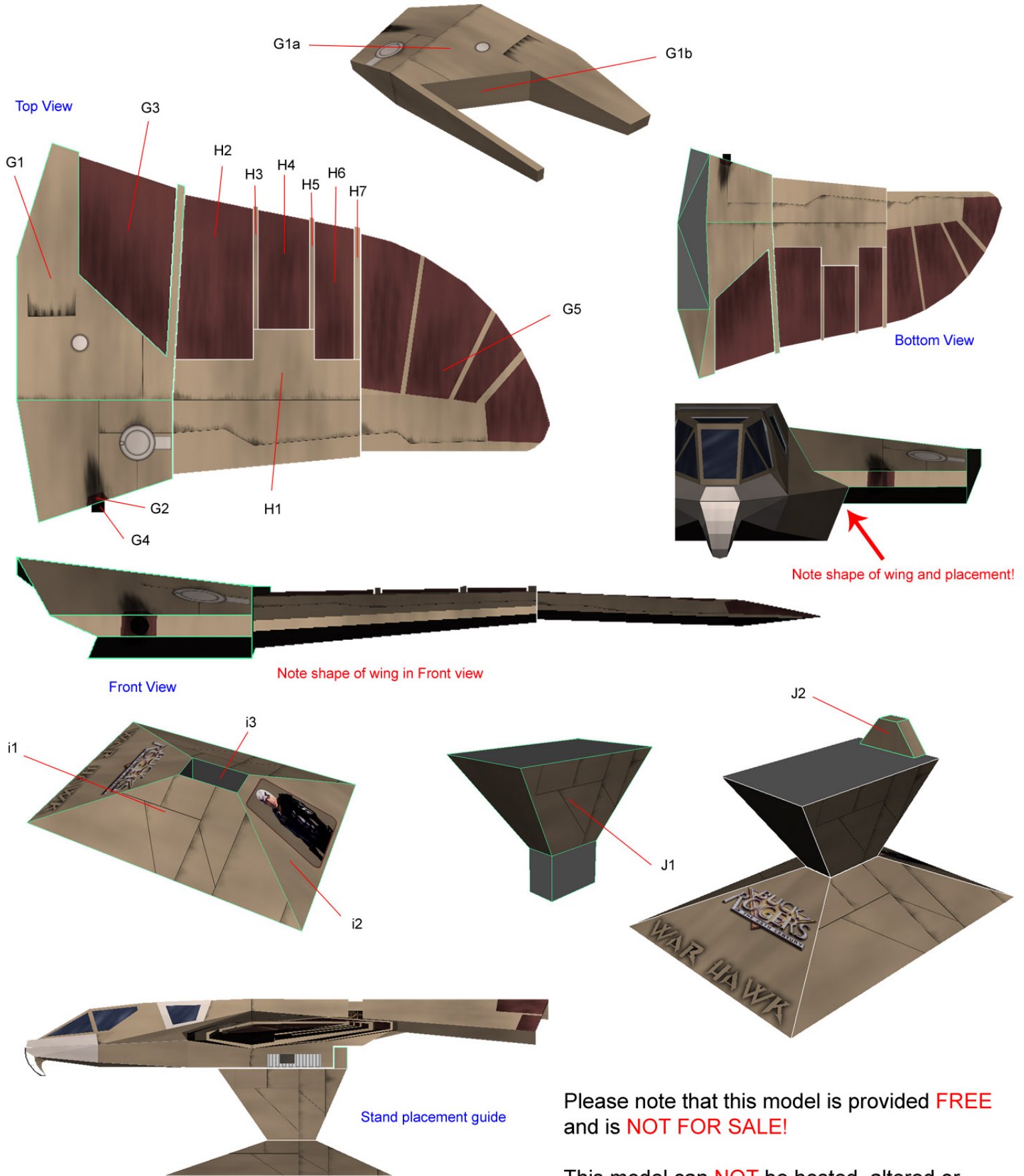
a thunderchild papermodel



For Closed doors, do not use parts A2b, A3b, A4 and A5.
Use scrap pieces of paper and glue 2a & 2b as shown here:







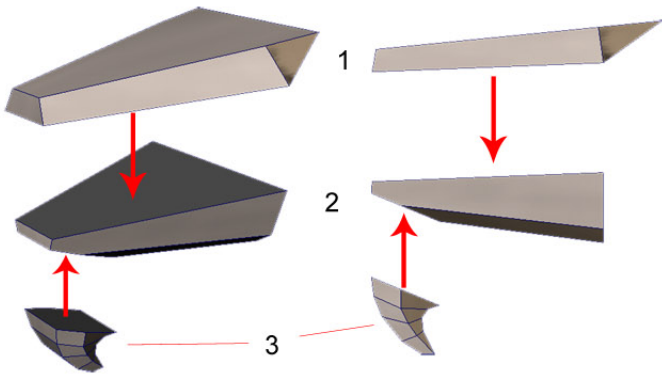
Please note that this model is provided **FREE** and is **NOT FOR SALE!**

This model can **NOT** be hosted, altered or changed without the permission of the designer!

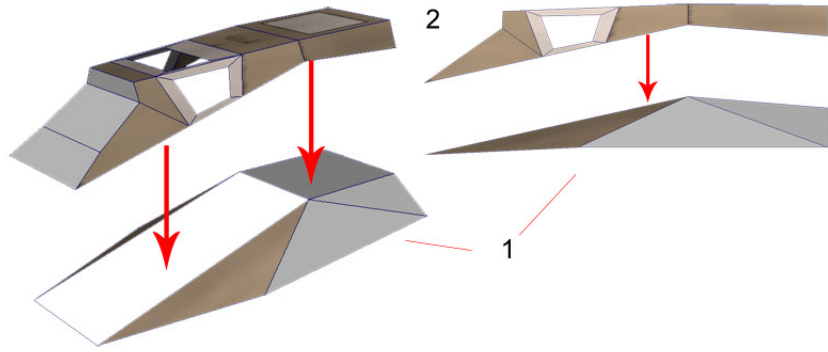
Designer: ThunderChild
Contact: thunderchild_pdp@yahoo.com

Thank you for downloading this model. Enjoy!

Nose alternate

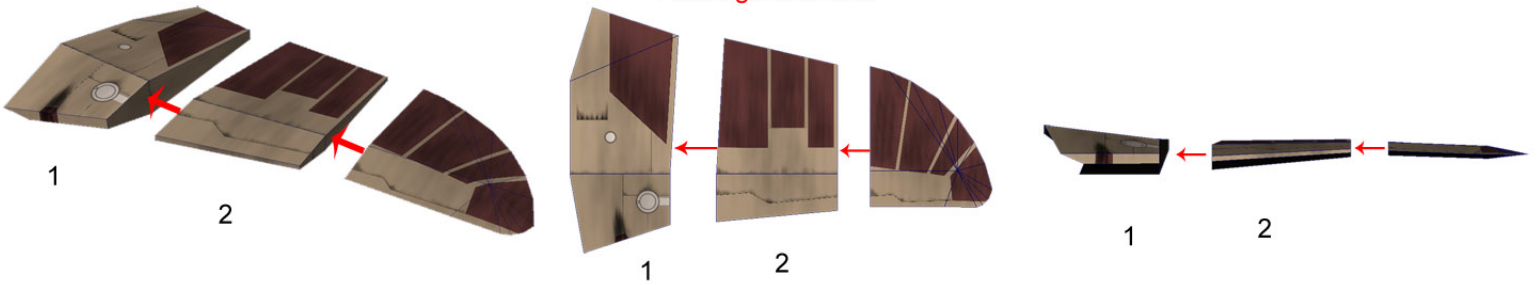


Fuselage alternate

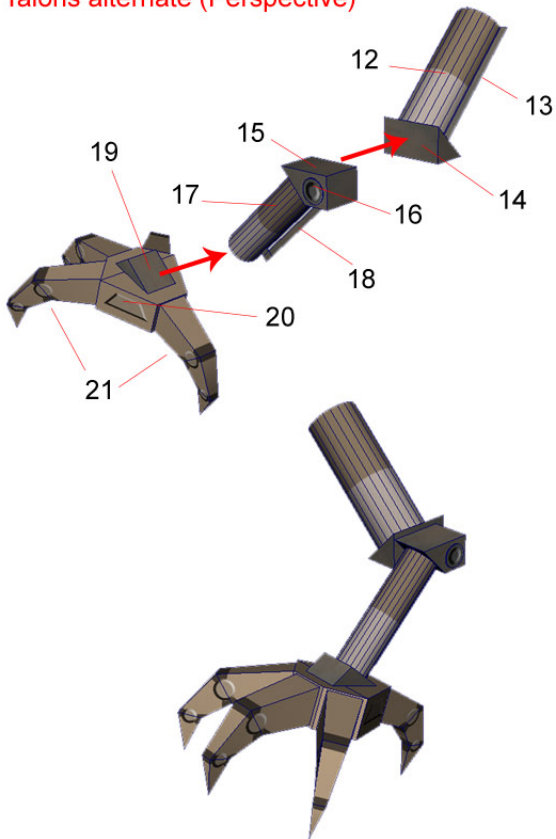


Remember to insert the windows FIRST on the inside of part 2.

Fuselage alternate



Talons alternate (Perspective)



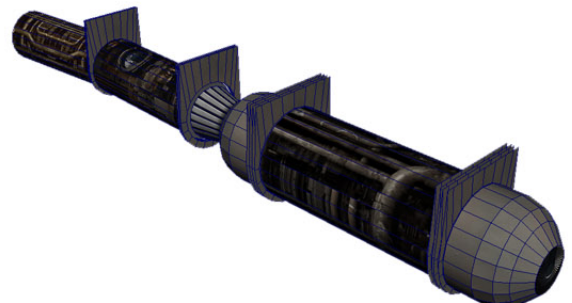
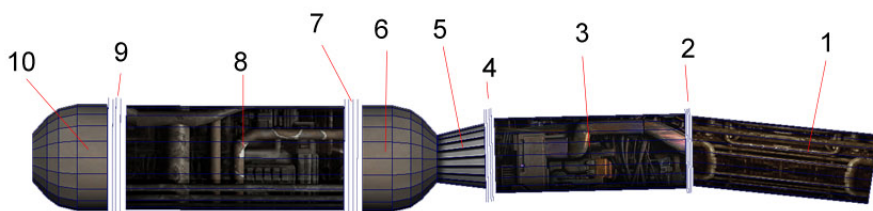
Talons alternate (Side)



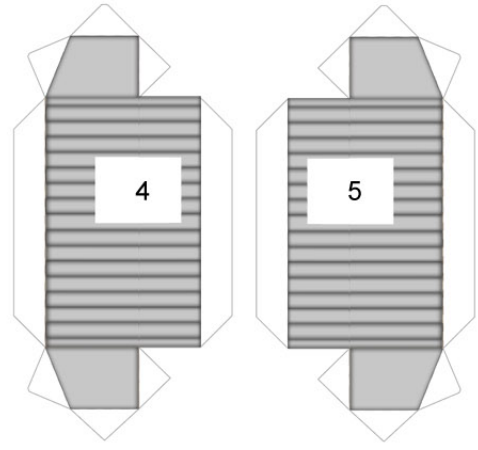
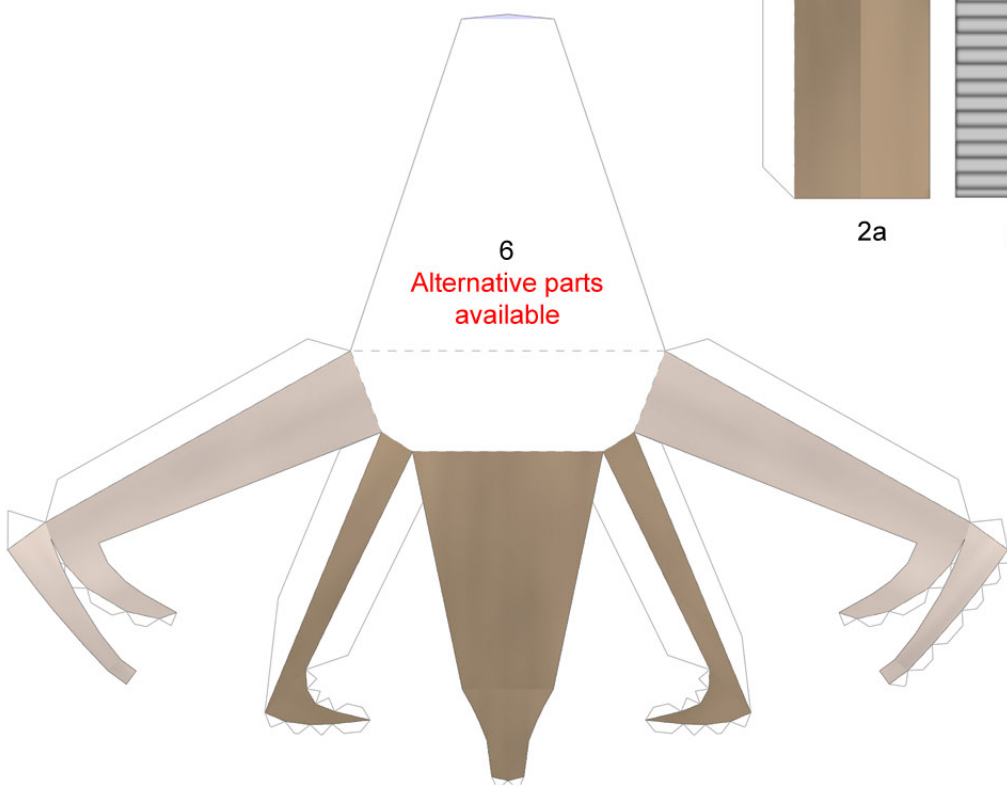
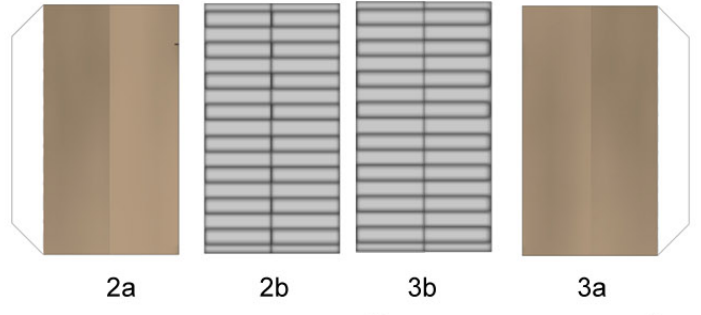
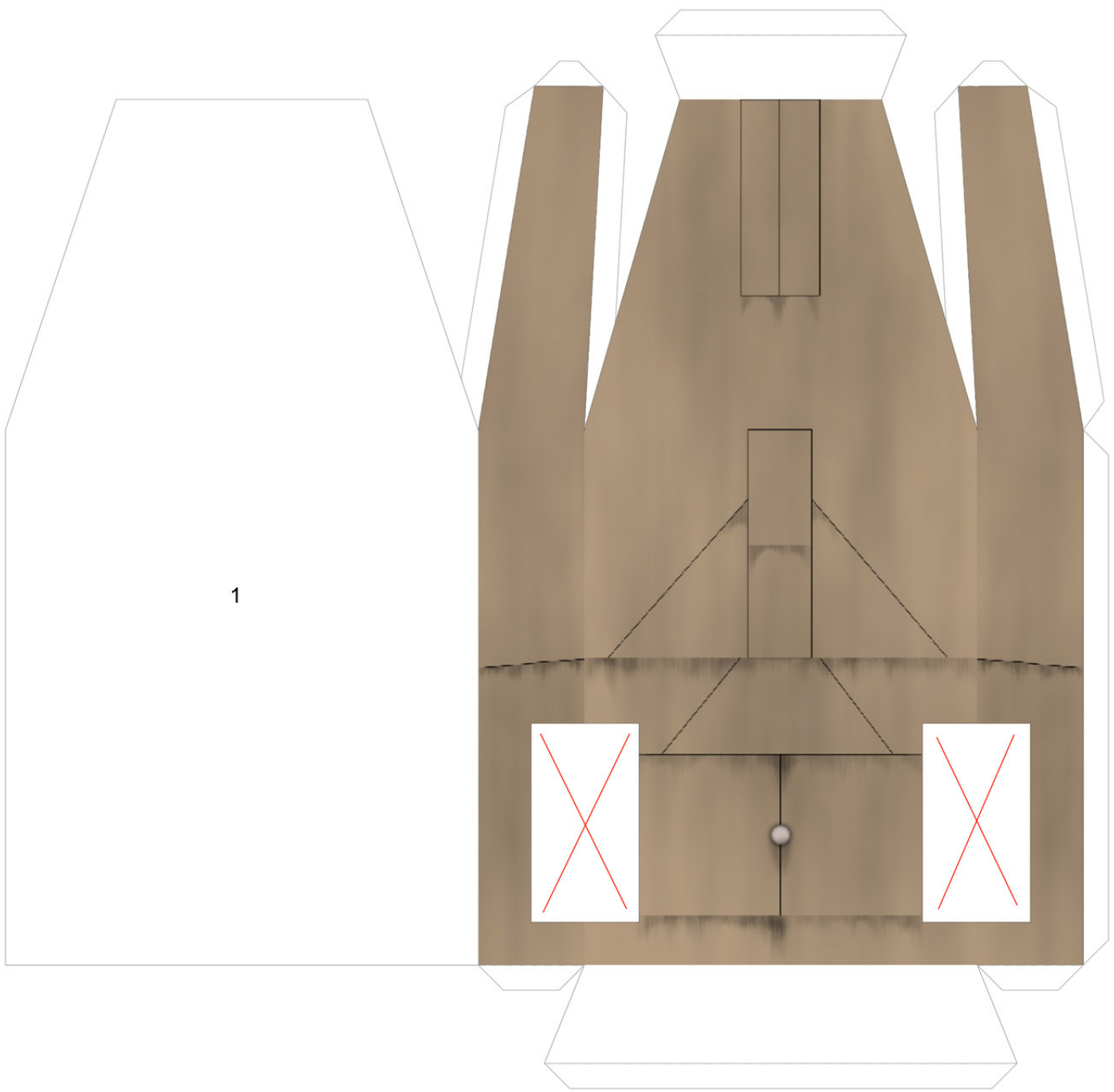
Talons alternate (Front)



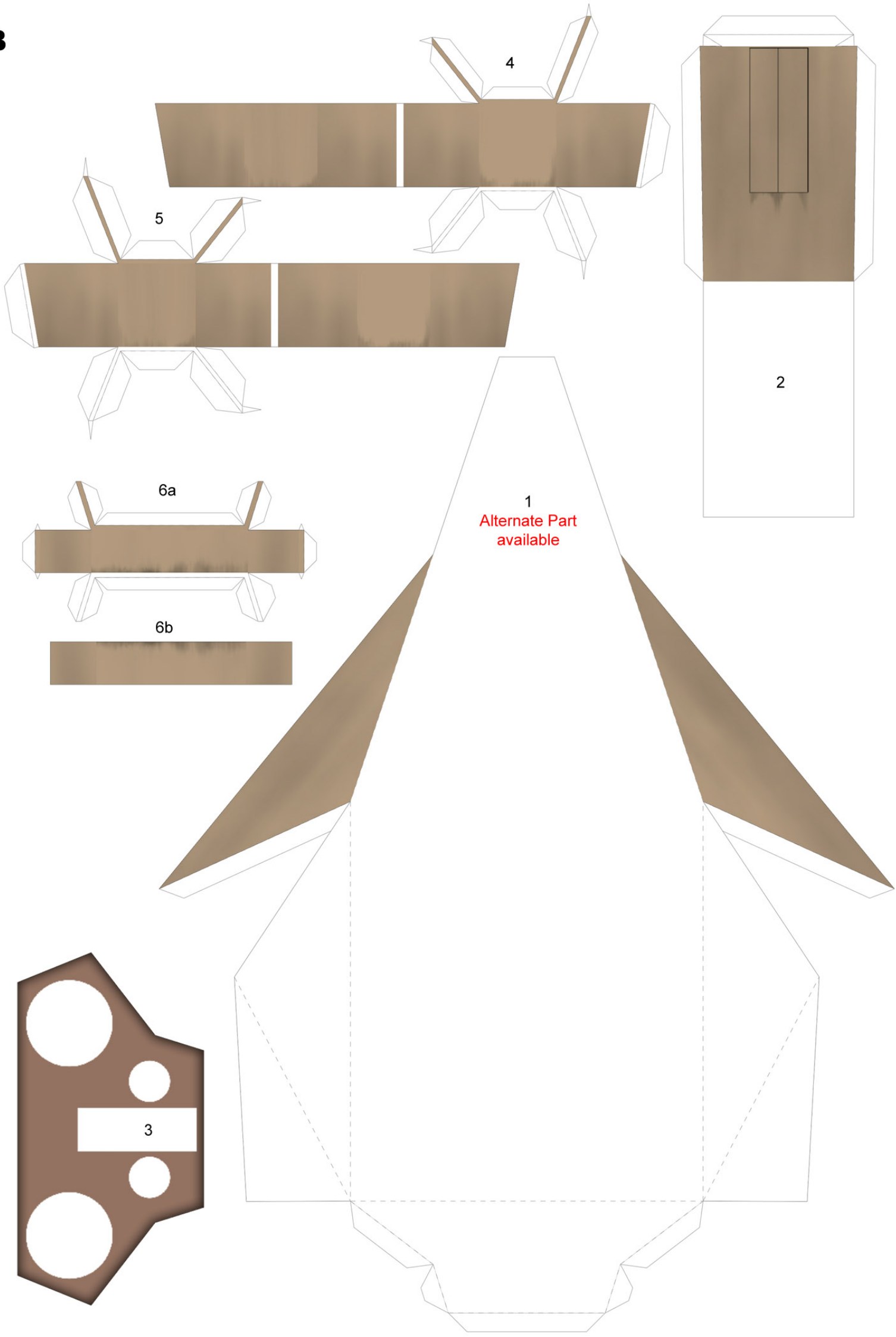
Engines Alternate



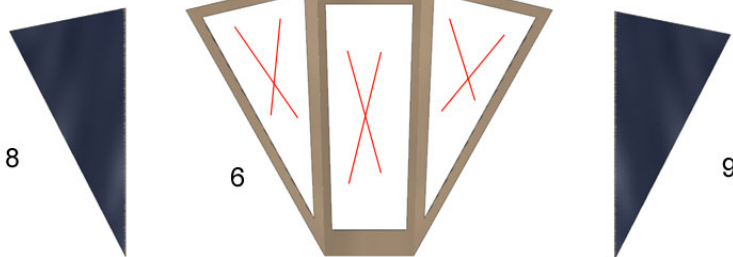
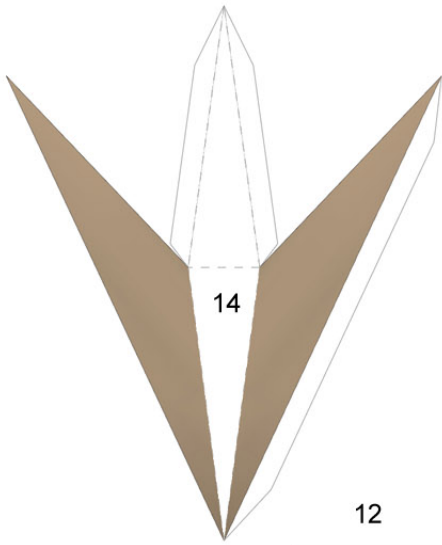
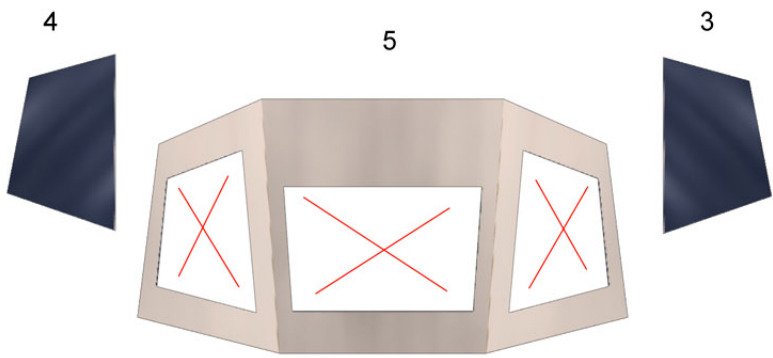
A



B



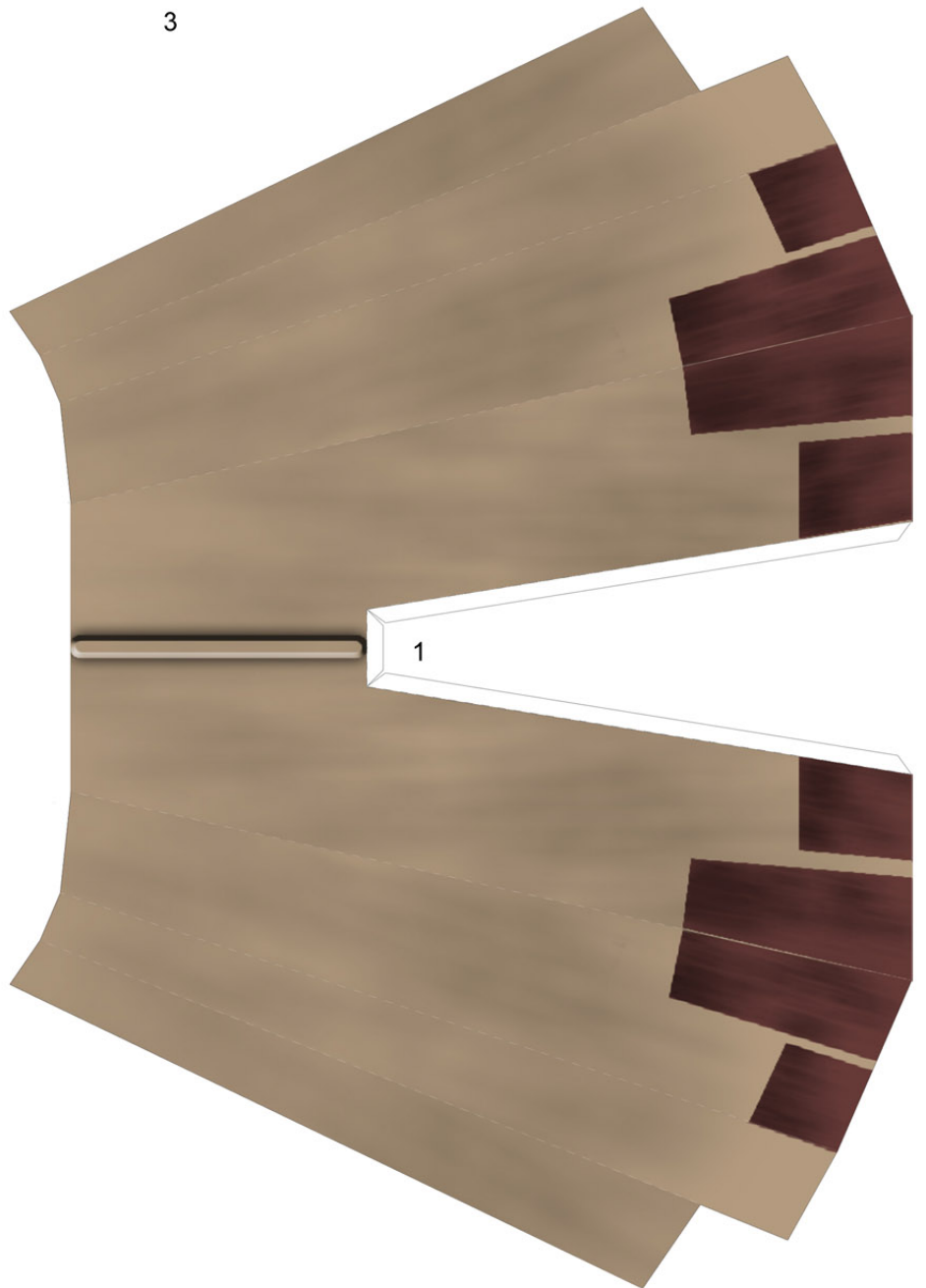
C



D



3



1



7



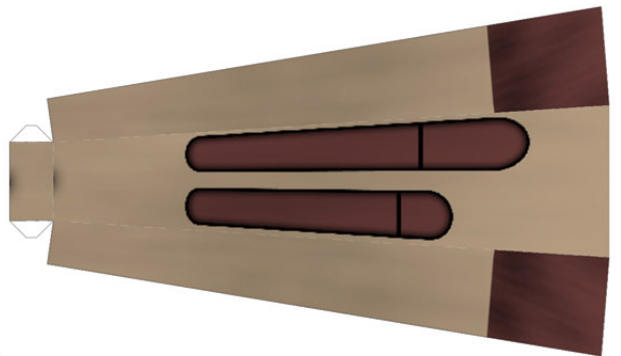
8



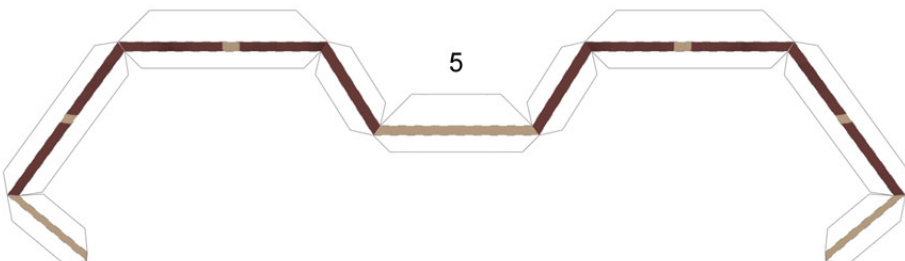
4



2

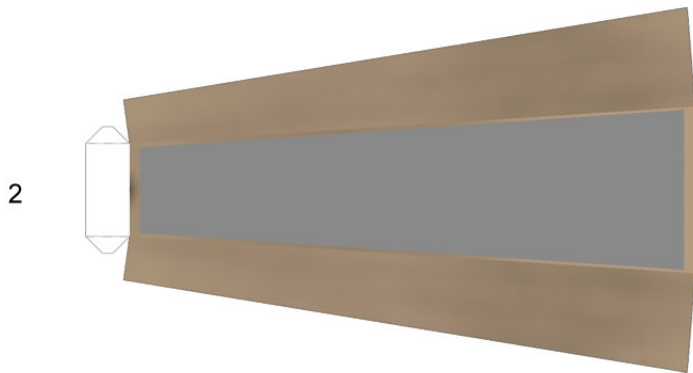
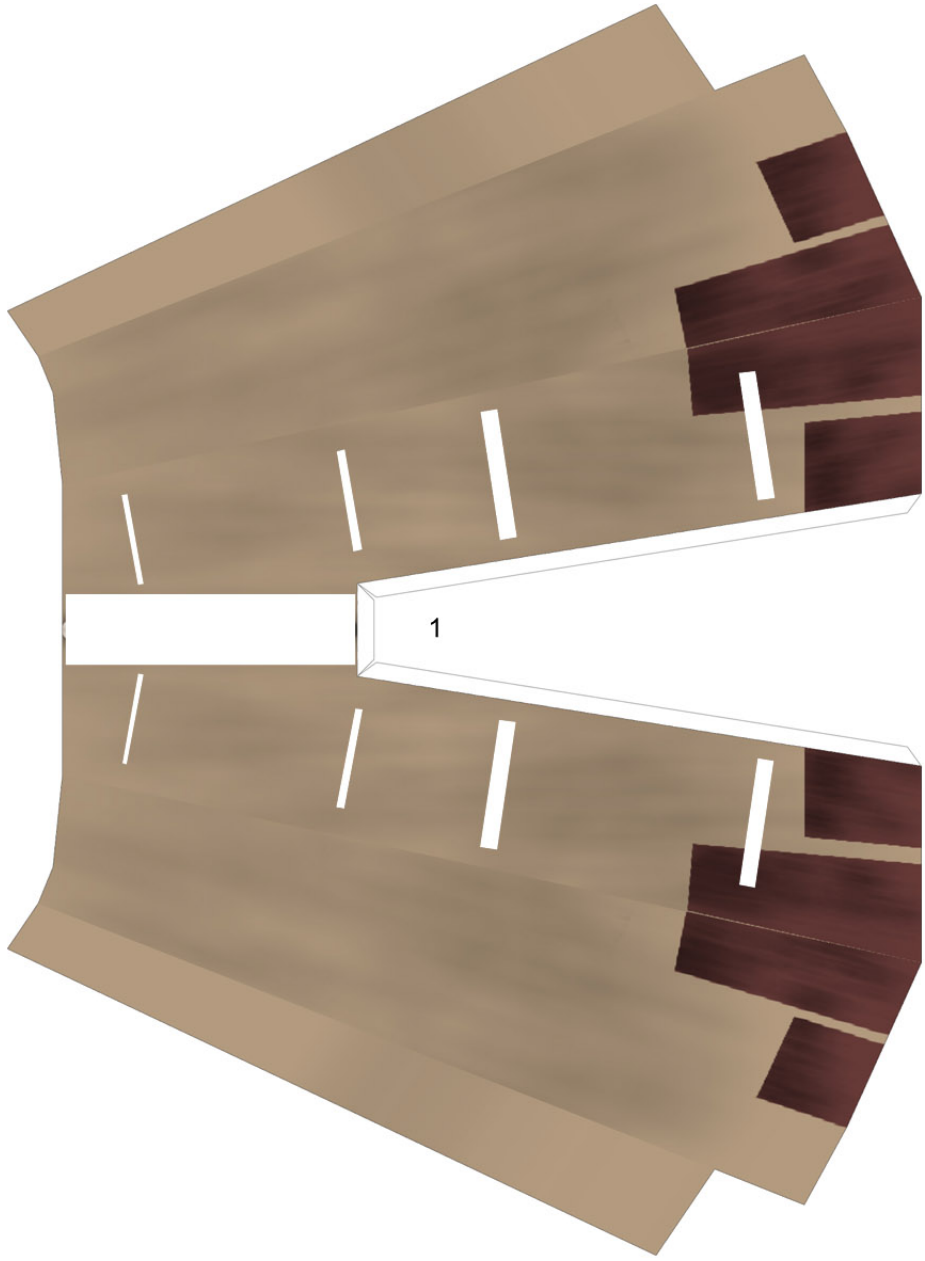


6

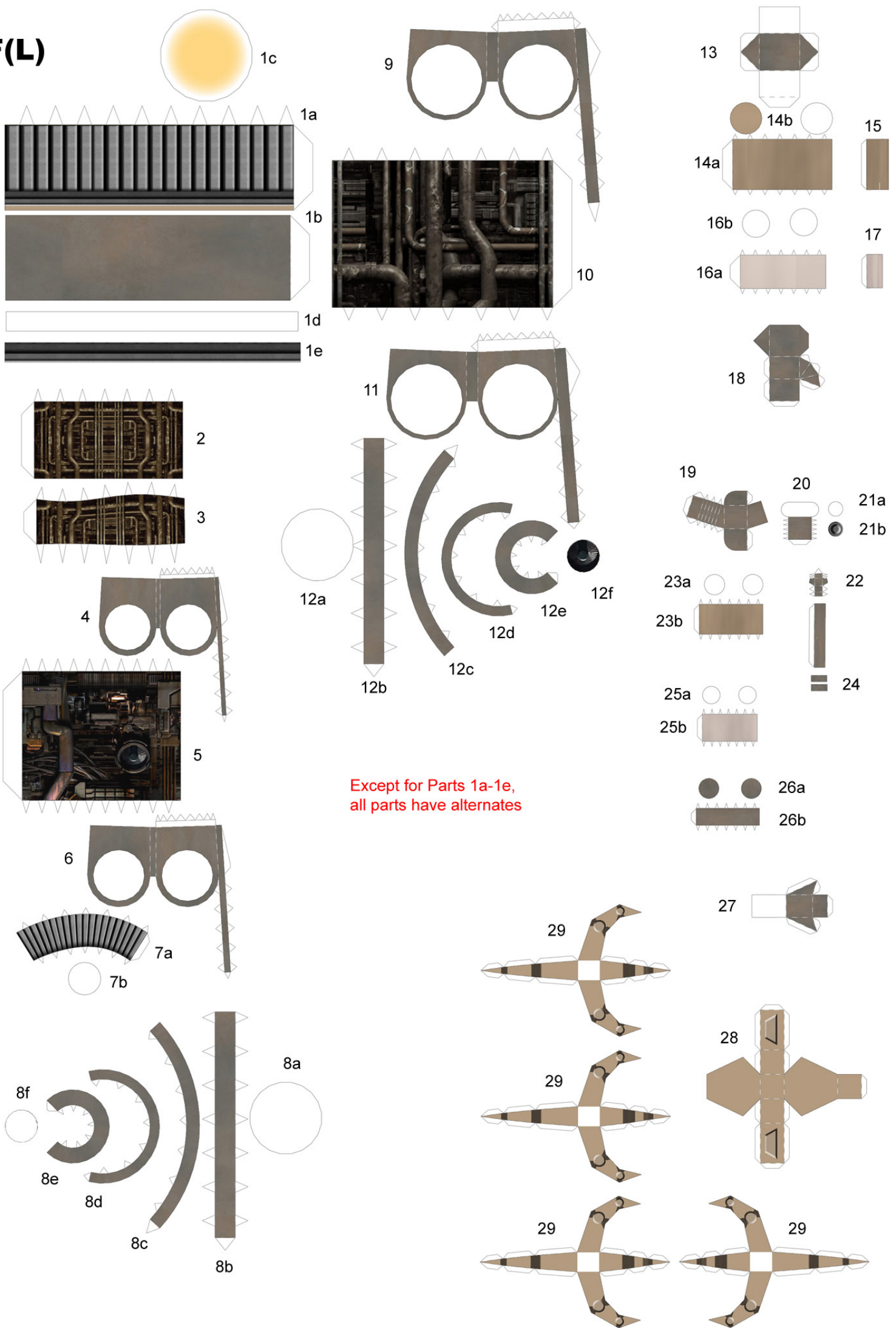


5

E

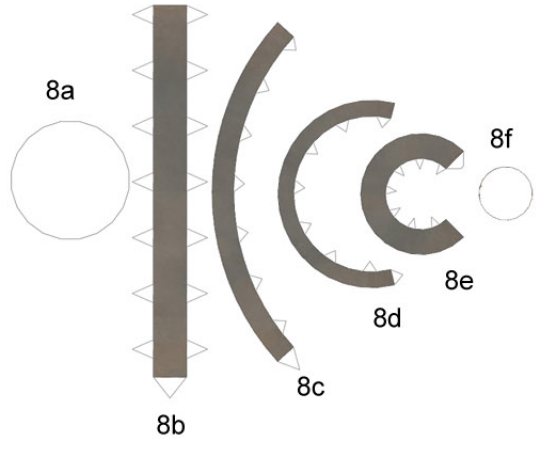
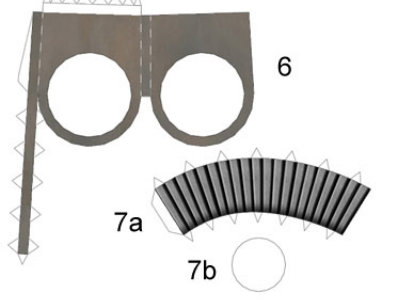
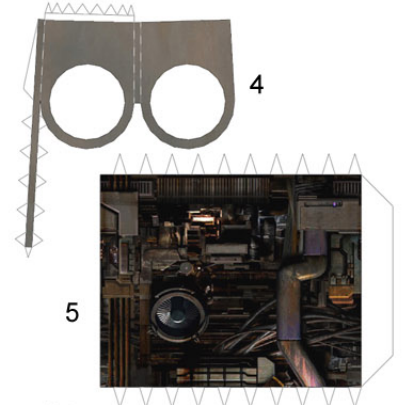
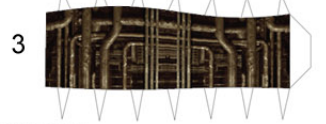
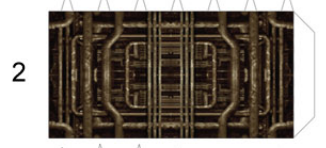
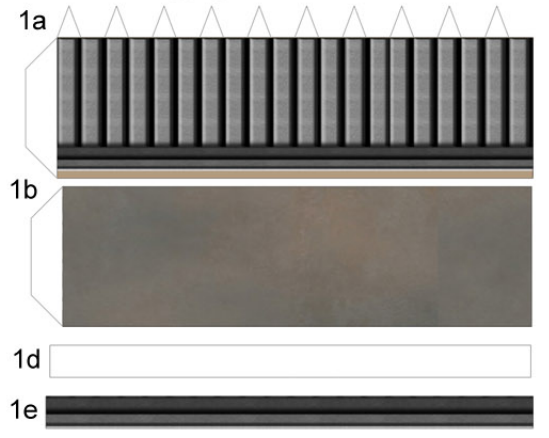
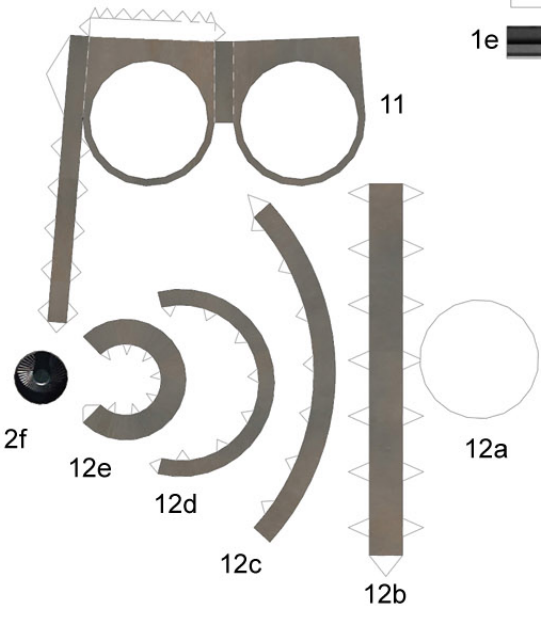
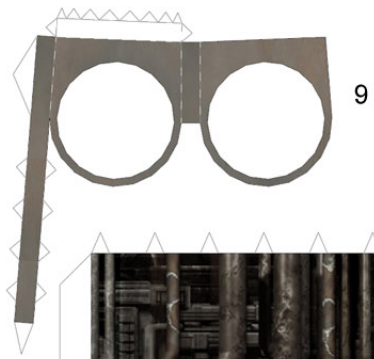
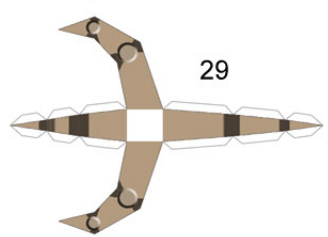
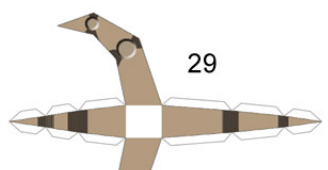
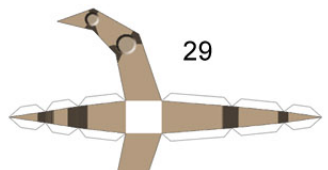
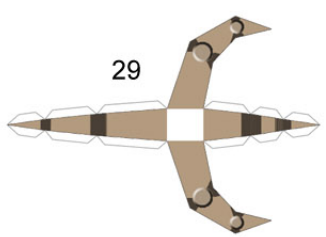
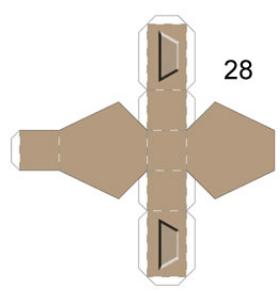
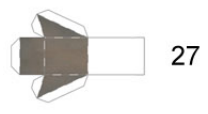
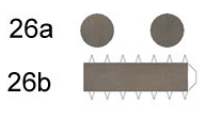
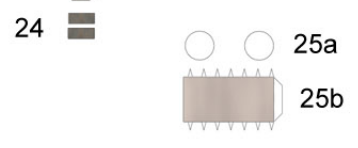
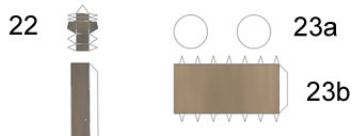
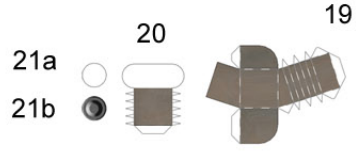
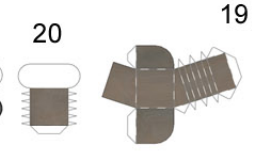
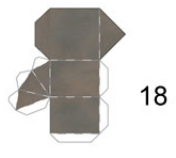
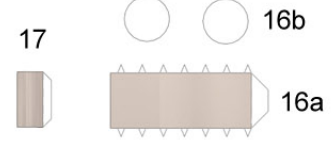
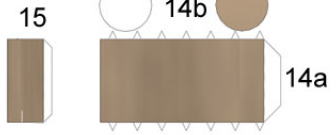
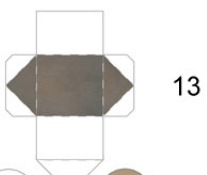


F(L)



Except for Parts 1a-1e,
all parts have alternates

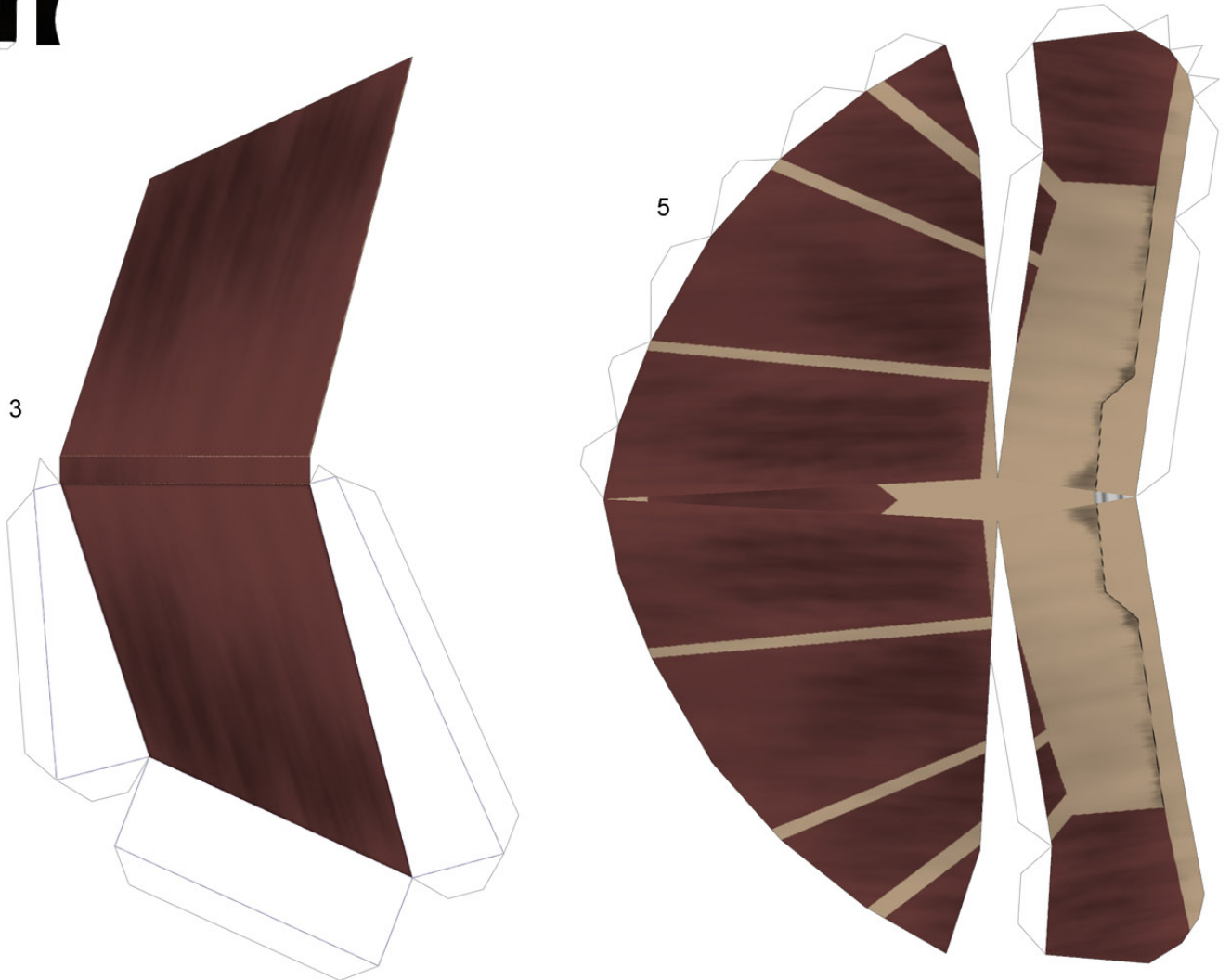
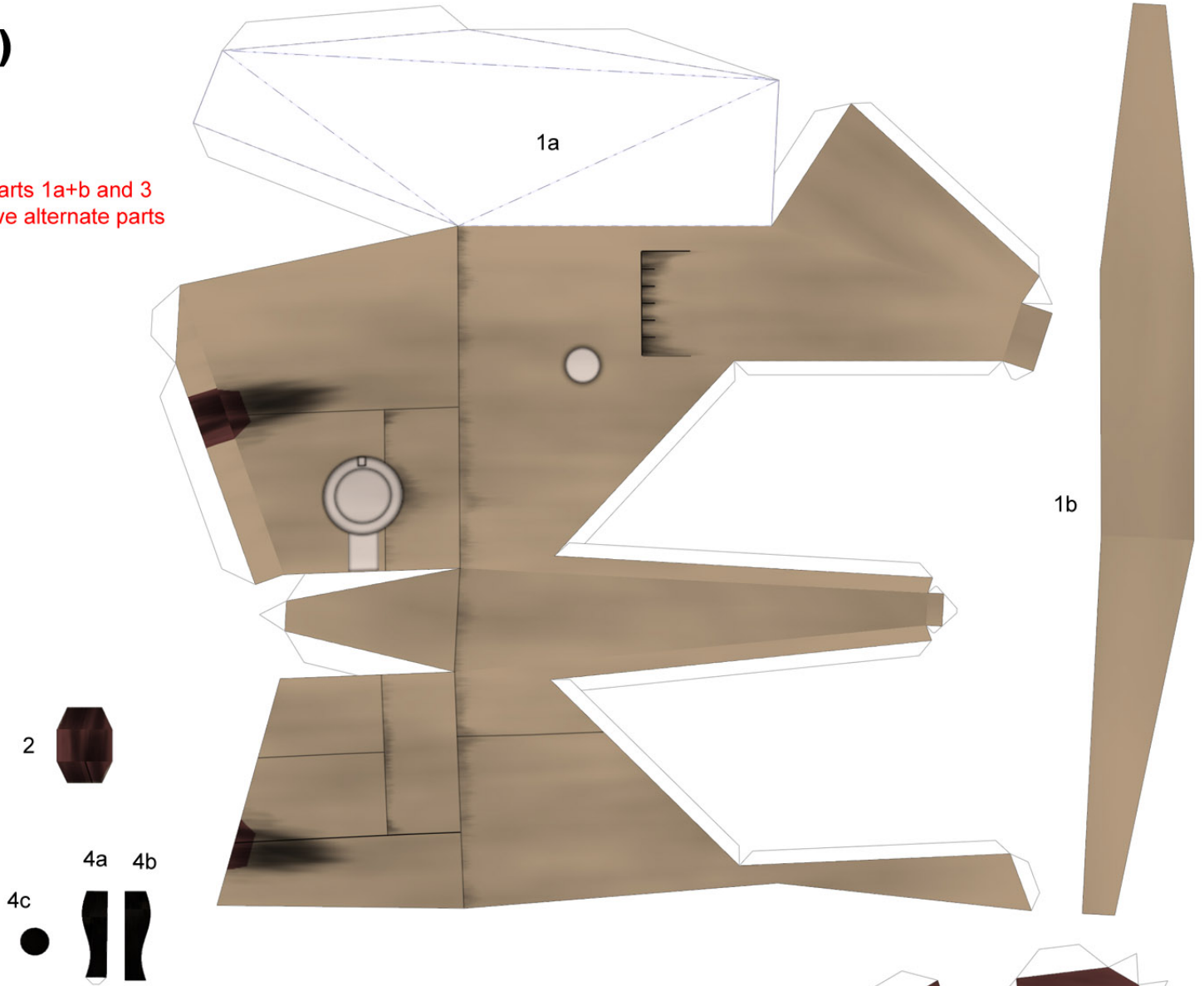
F(R)



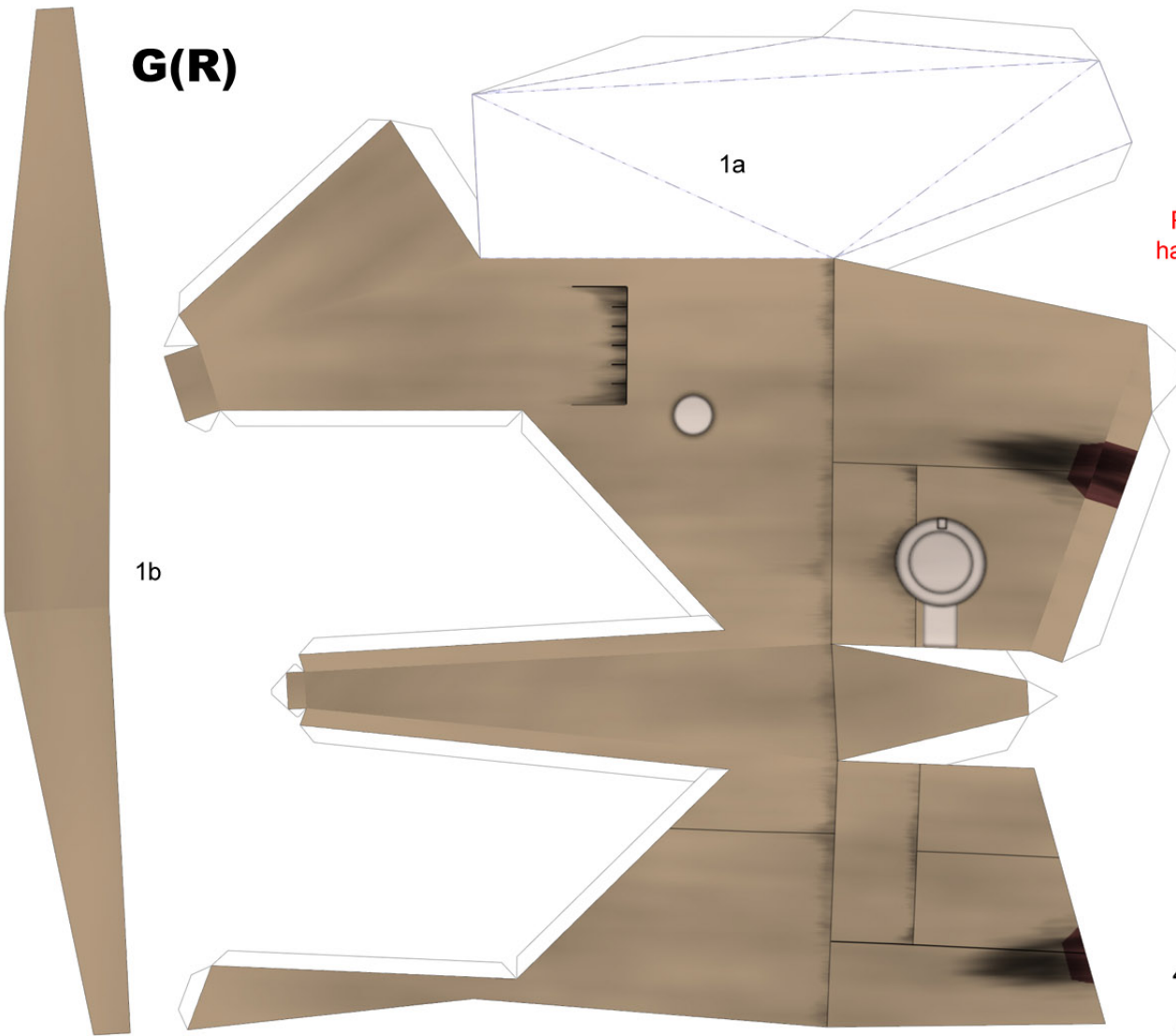
Except for Parts 1a-1e, all parts have alternates

G(L)

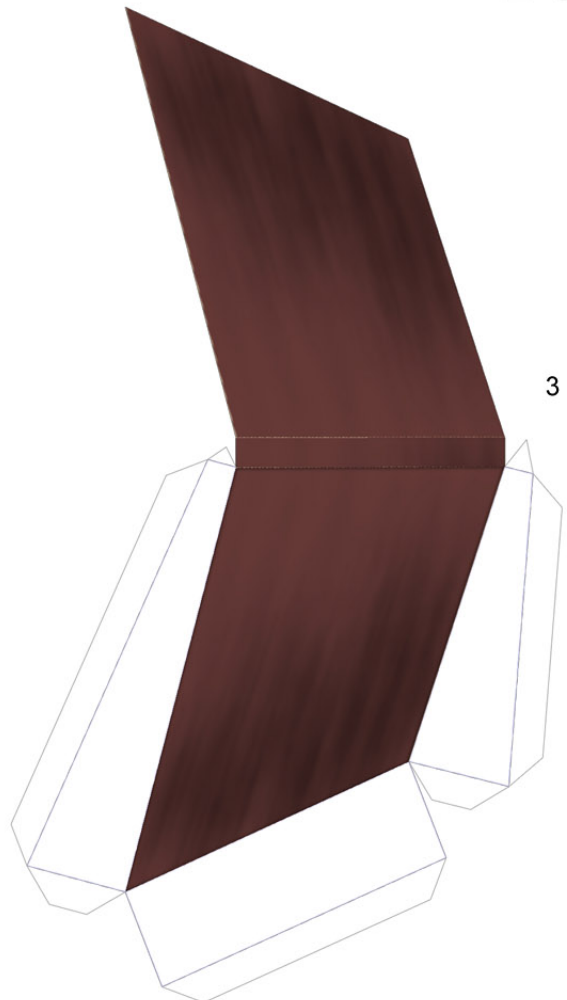
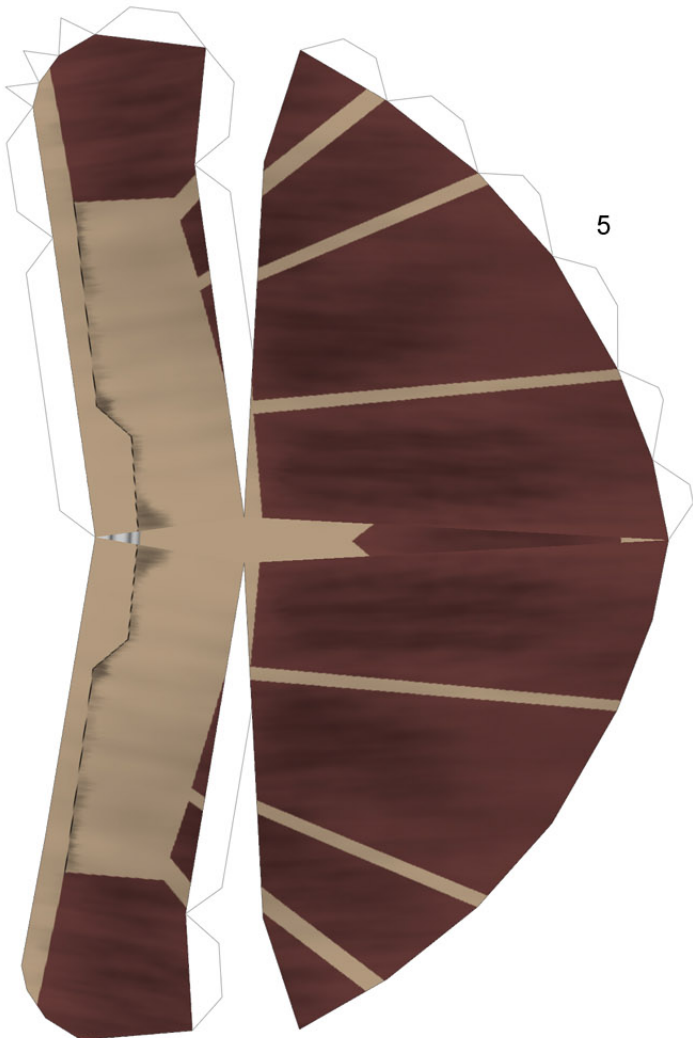
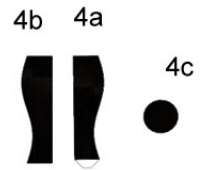
Parts 1a+b and 3
have alternate parts



G(R)

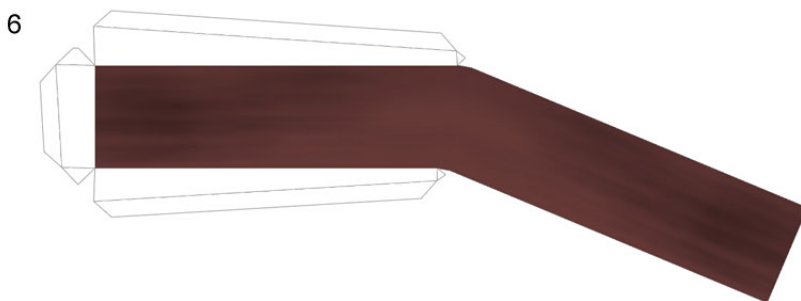
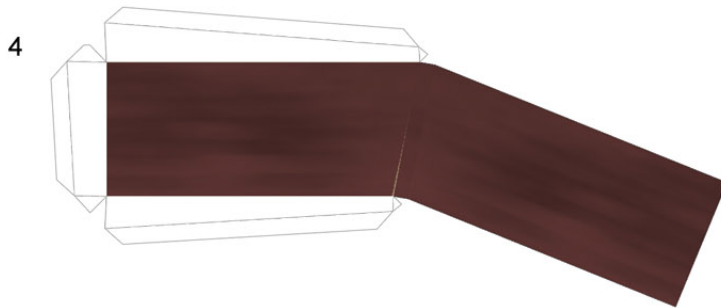
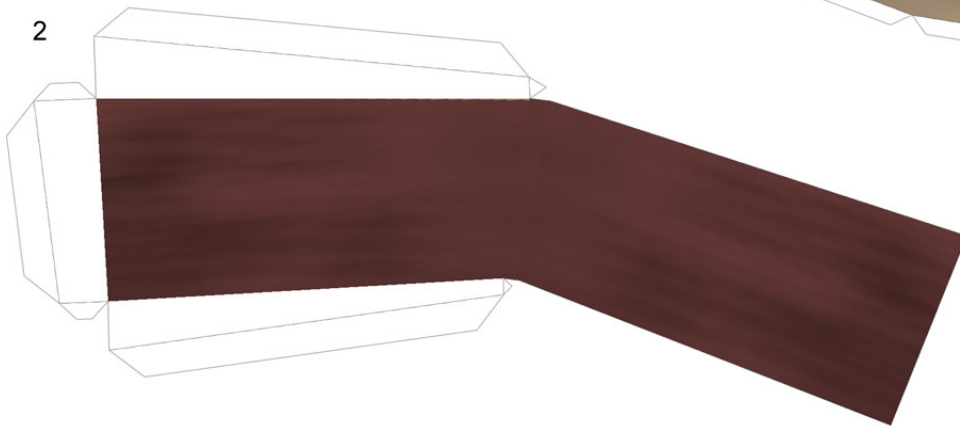
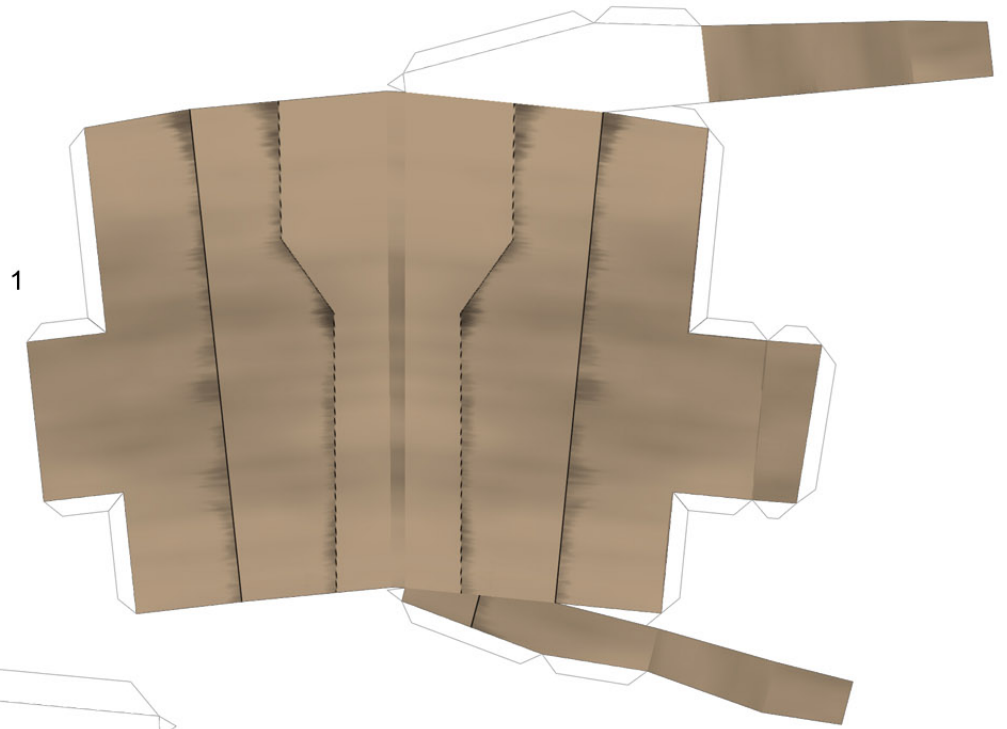


Parts 1a+b and 3 have alternate parts



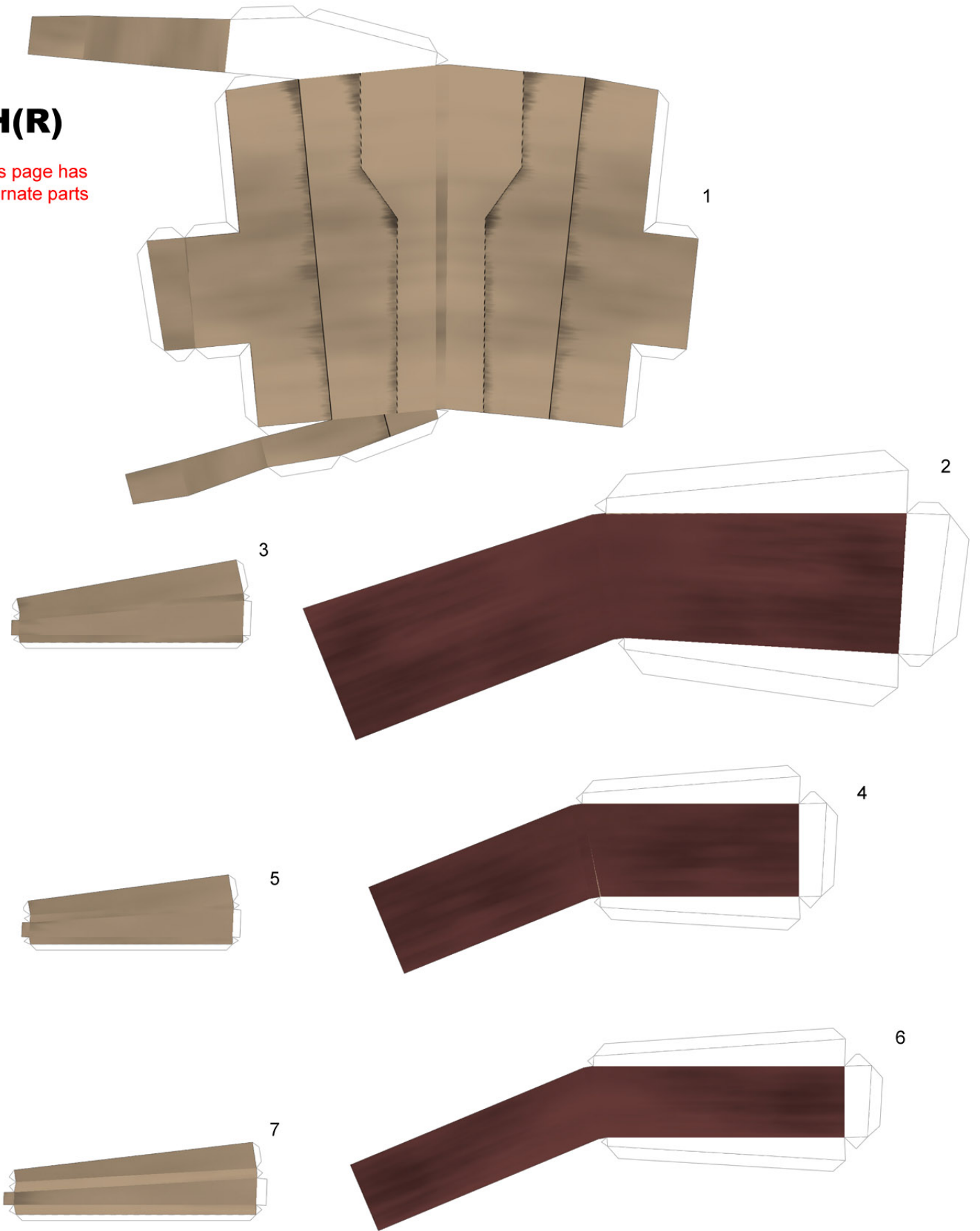
H(L)

This page has
alternate parts



H(R)

This page has alternate parts



2

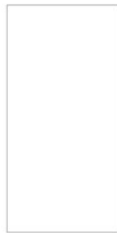


1



WAR HAWK

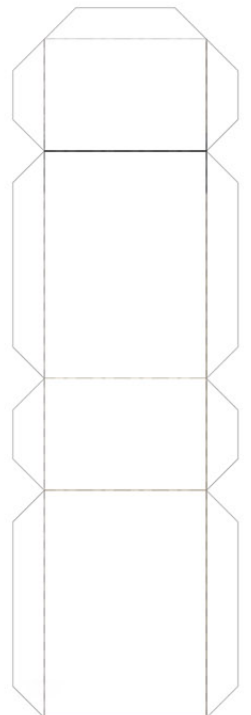
model designed
By:
thunderchild



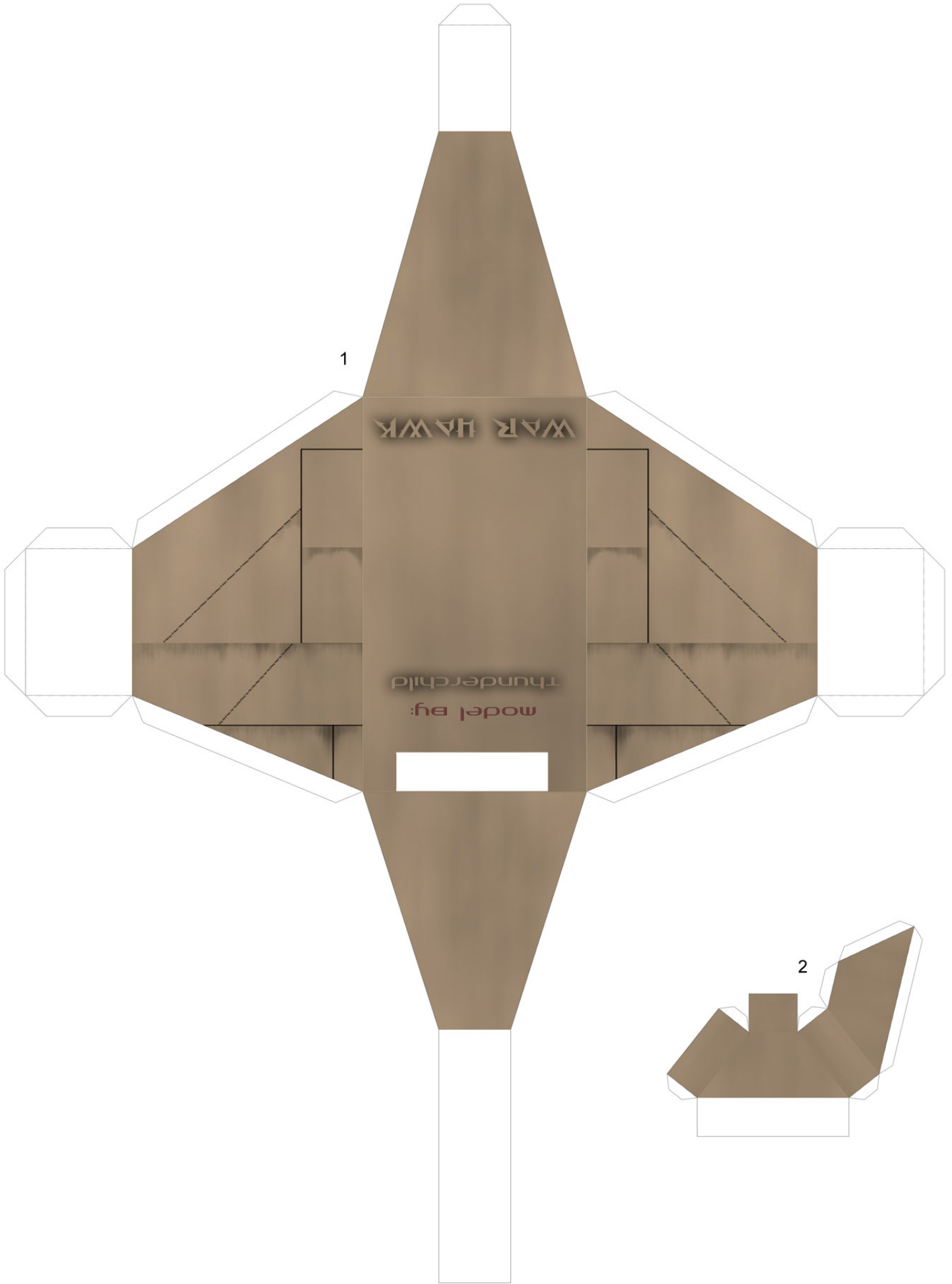
This model is provided **FREE**
and is **NOT** for sale!

thunderchild_pdp@yahoo.com

3



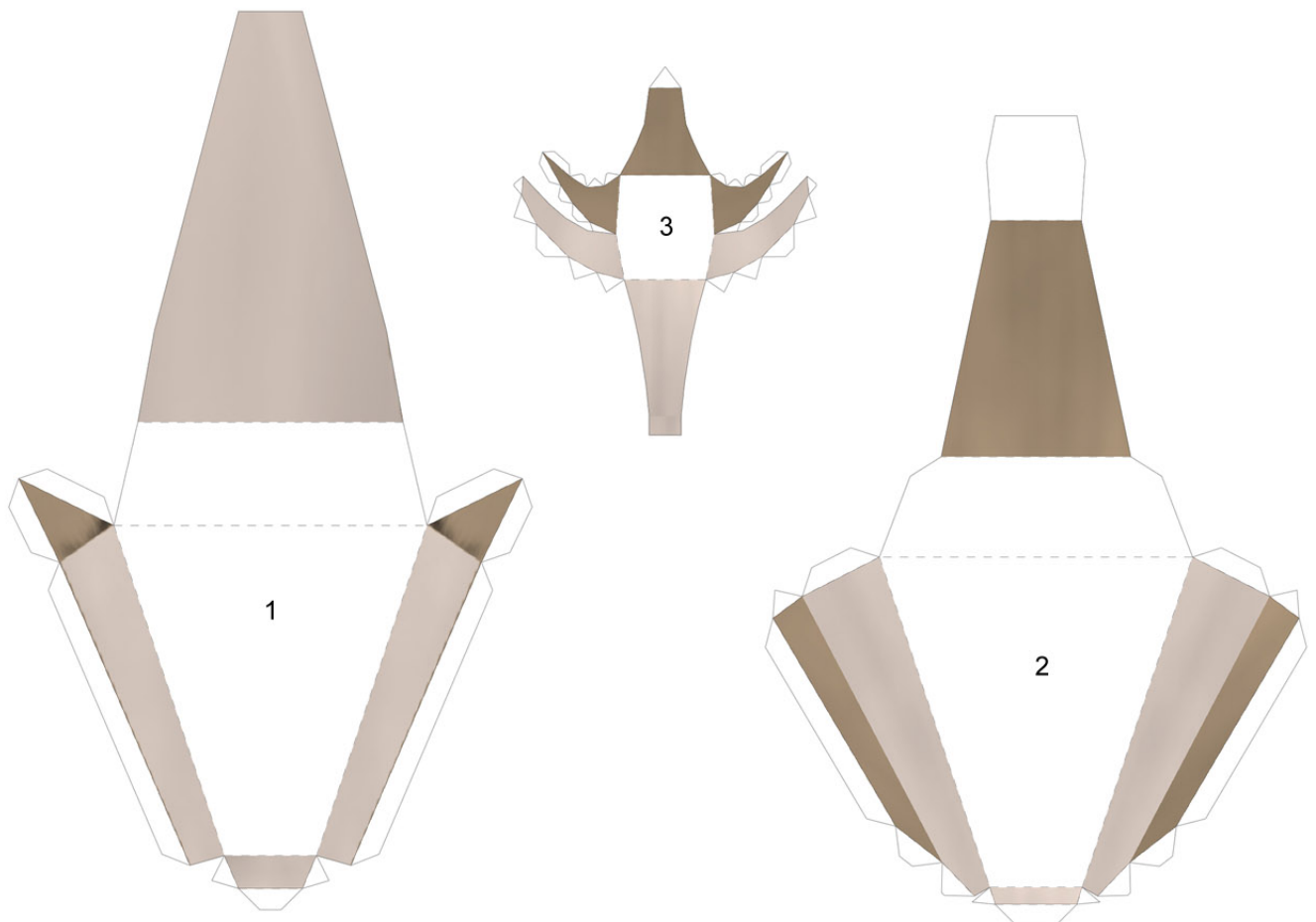
J



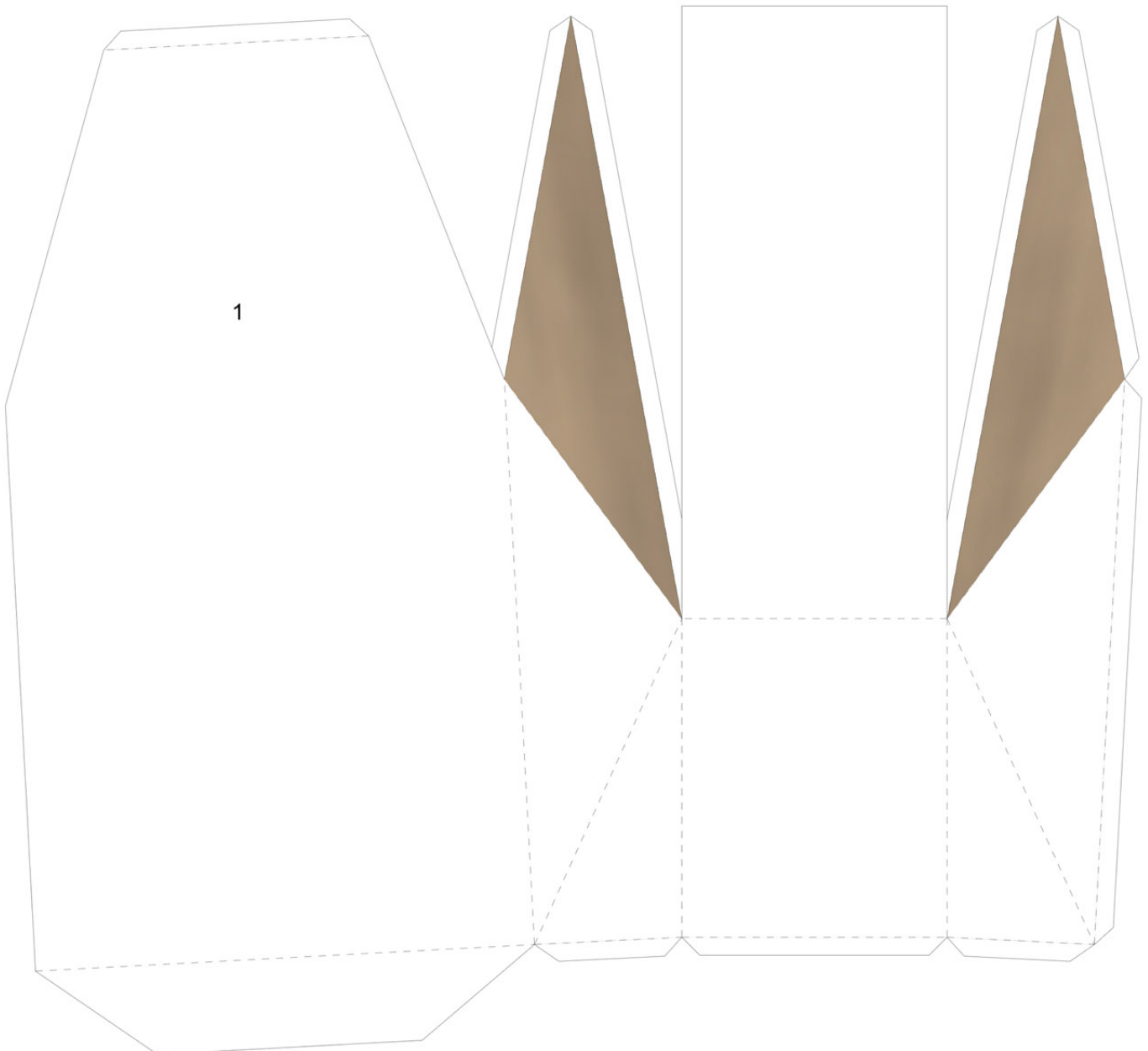
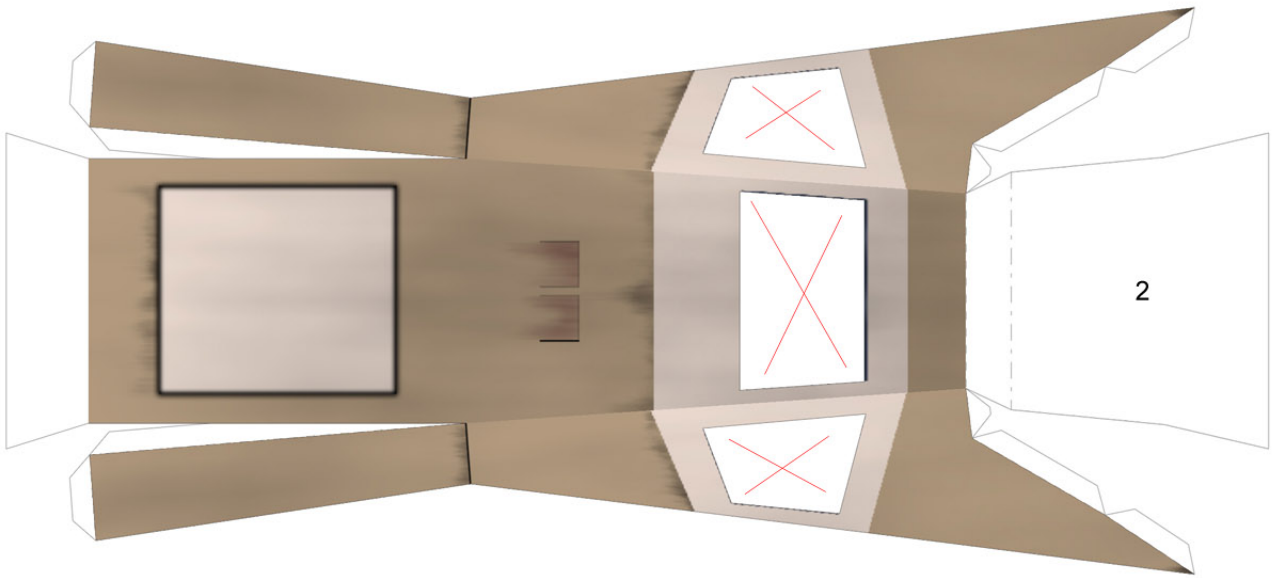
ALTERNATE PART SHEETS

Some parts on the model might prove difficult to build, so I have created these three sheets of ALTERNATE parts that should be a little easier to build. Original parts that can be replaced by these, are identified on the original sheets.

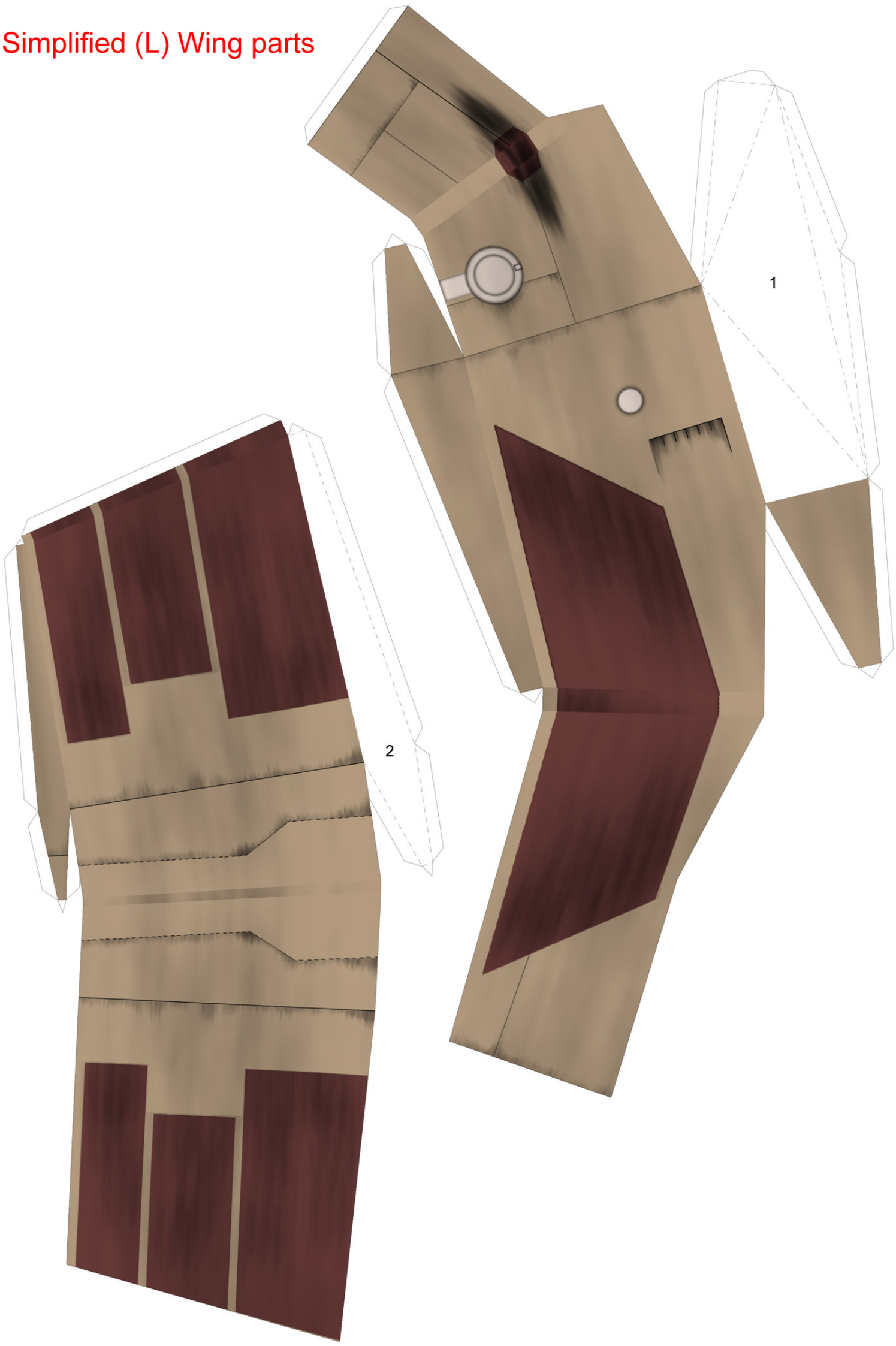
Simplified nose parts



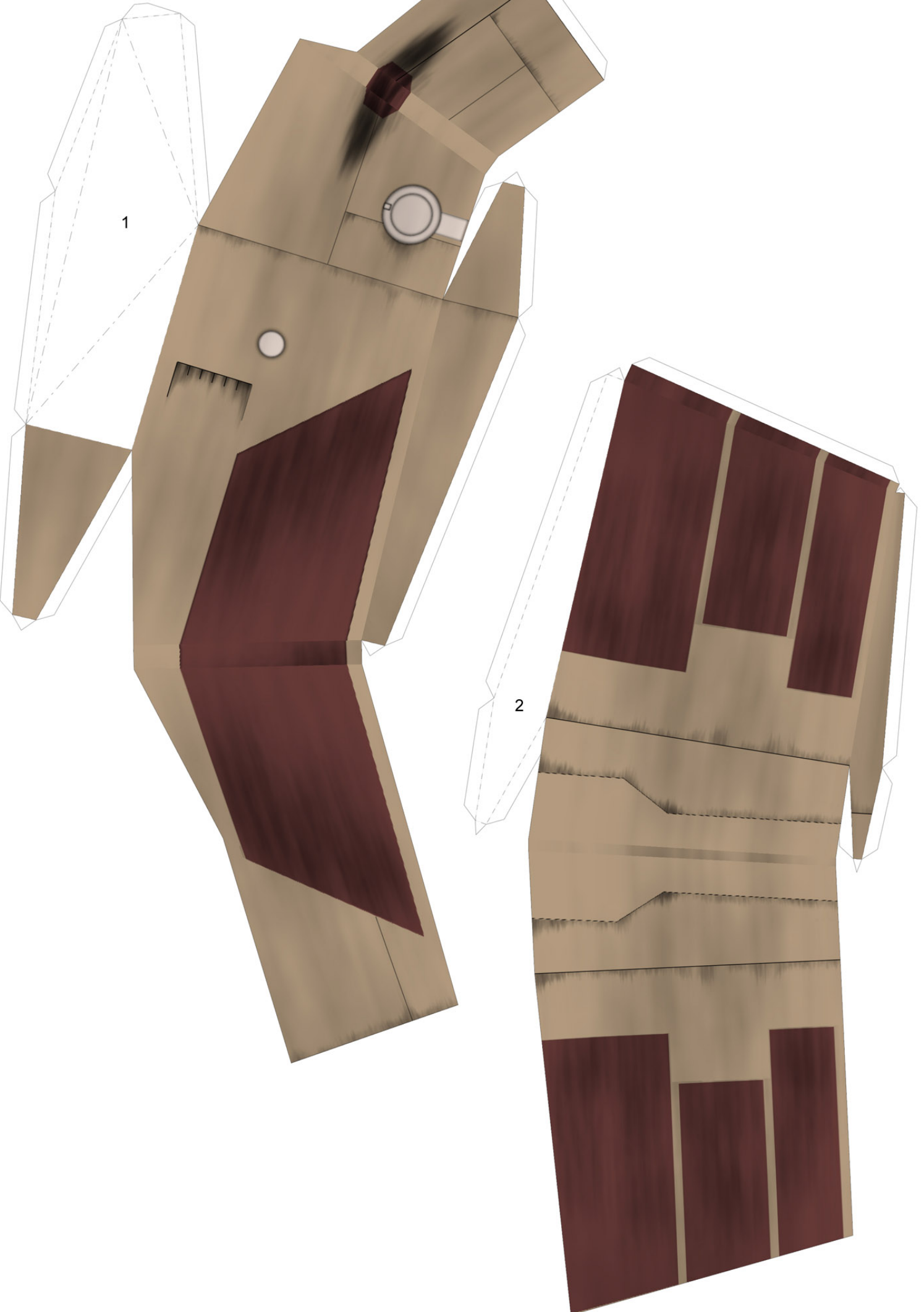
Simplified upper fuselage parts

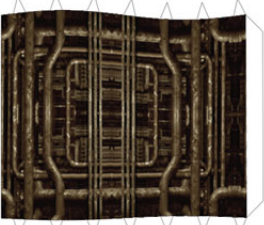


Simplified (L) Wing parts

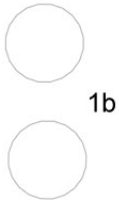


Simplified (R) Wing parts

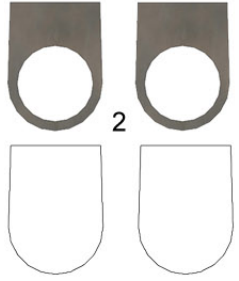




1a



1b



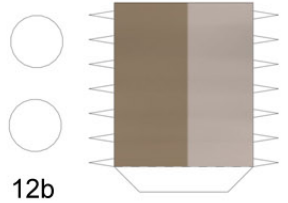
2



11

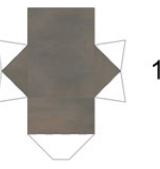
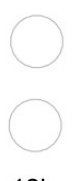


13



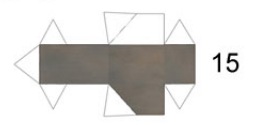
12a

12b

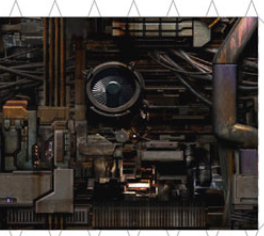


14

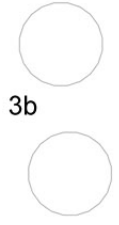
16



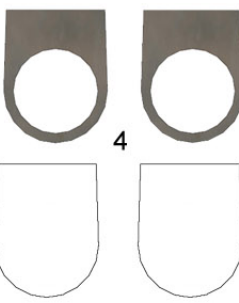
15



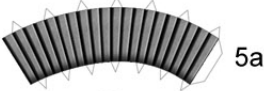
3a



3b



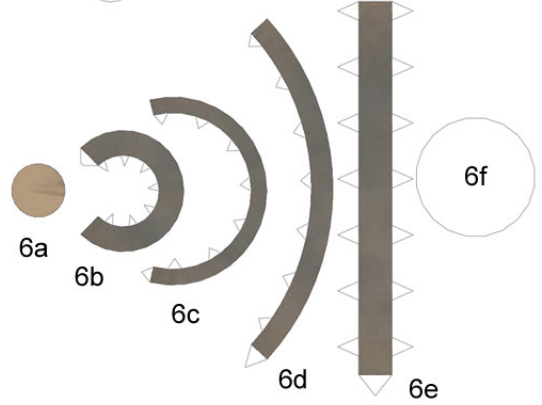
4



5a



5b



6a

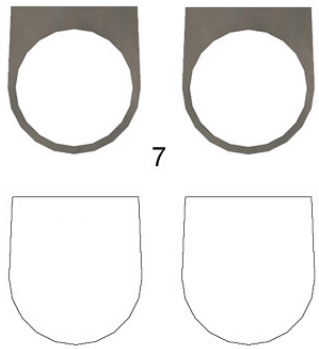
6b

6c

6d

6e

6f



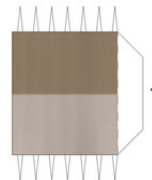
7



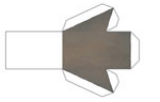
18



17b



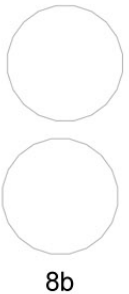
17a



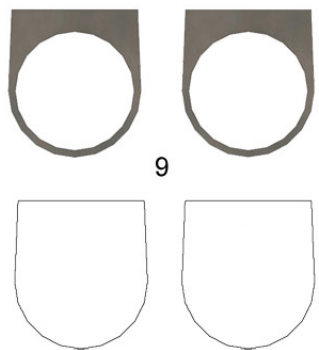
19



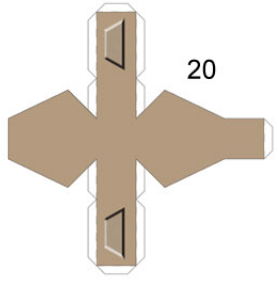
8a



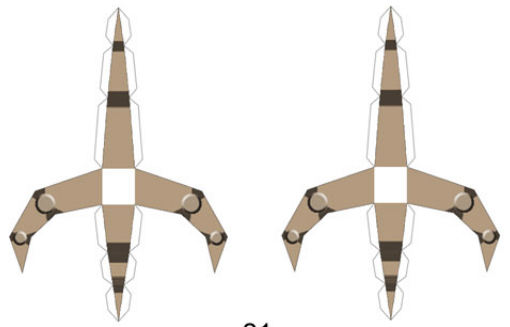
8b



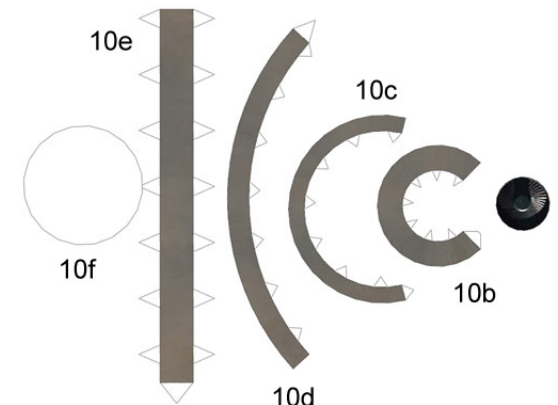
9



20



21



10e

10c

10c

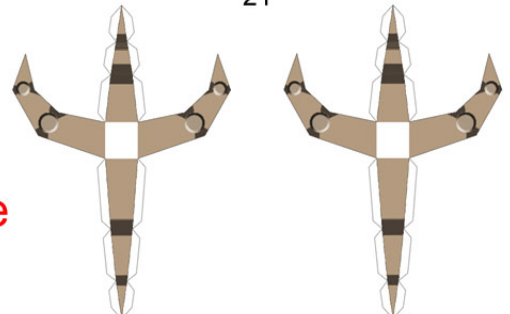
10b

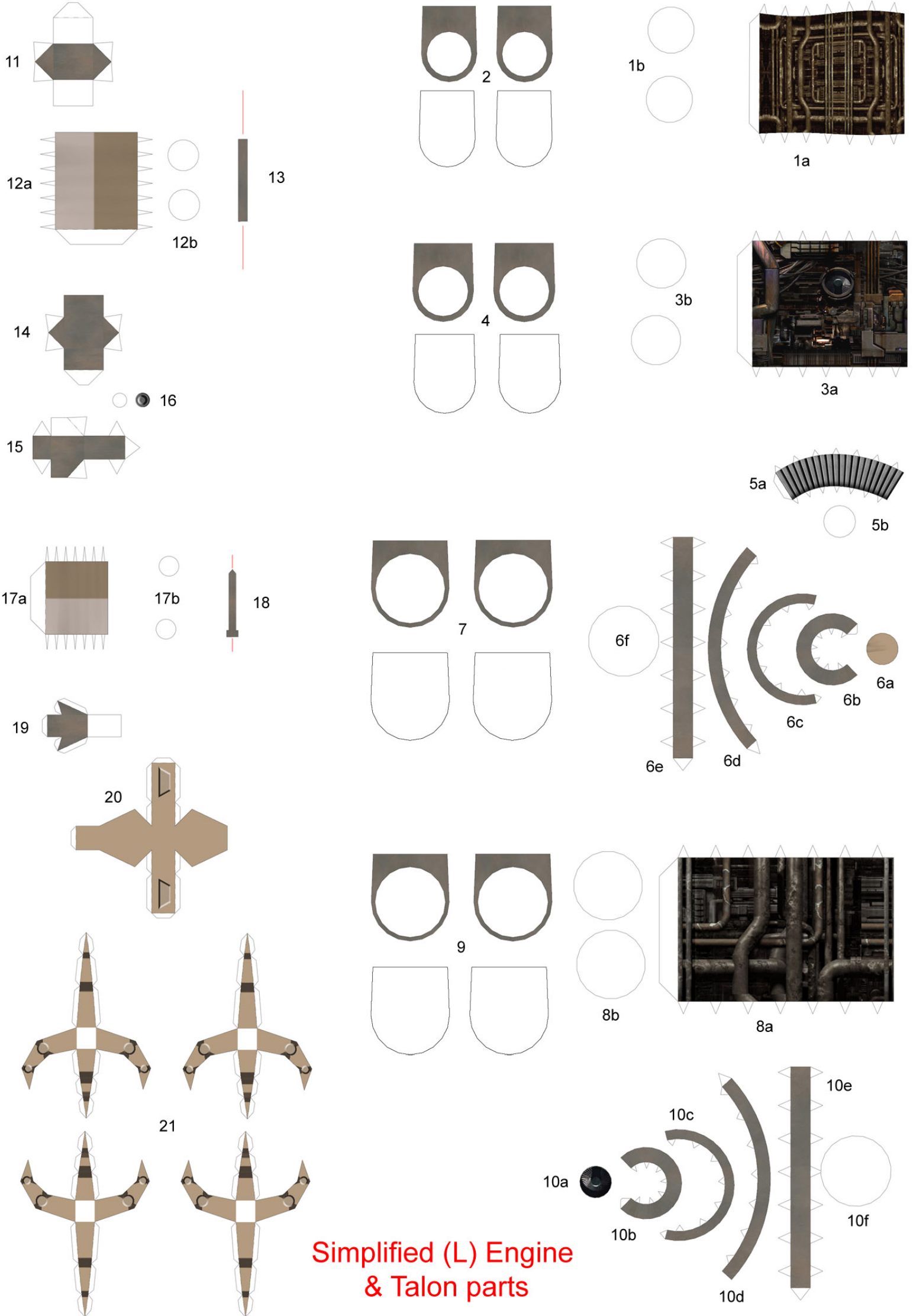
10a

10f

10d

Simplified (L) Engine & Talon parts





Simplified (L) Engine & Talon parts