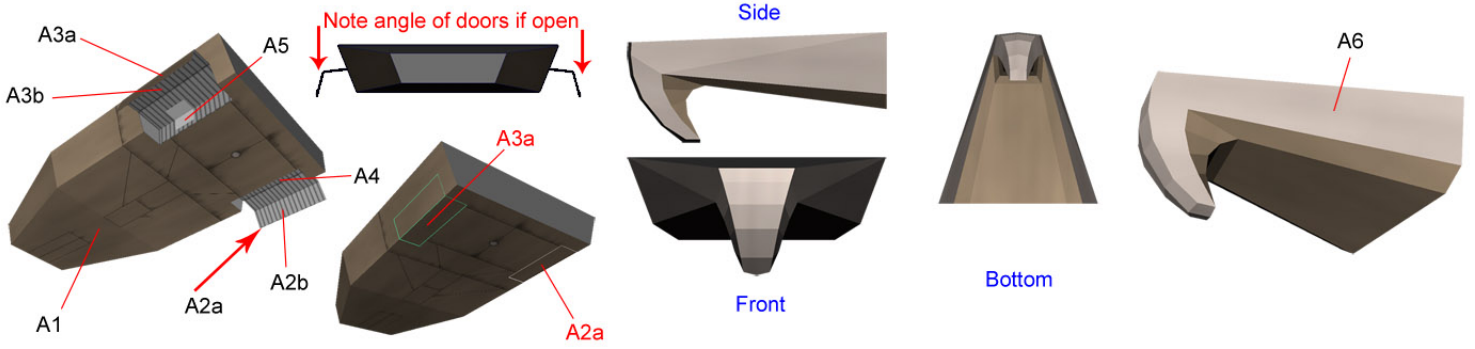


BUCK
ROGERS
IN THE 25TH CENTURY

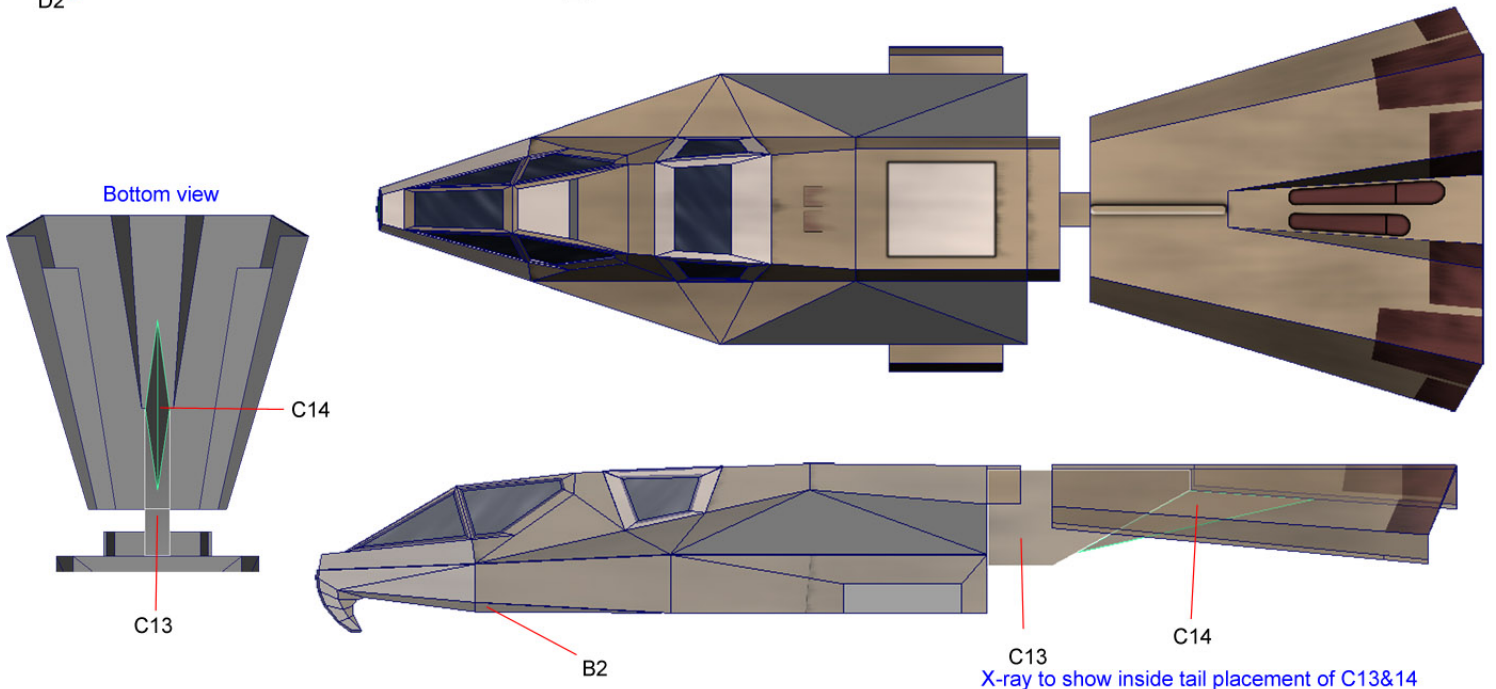
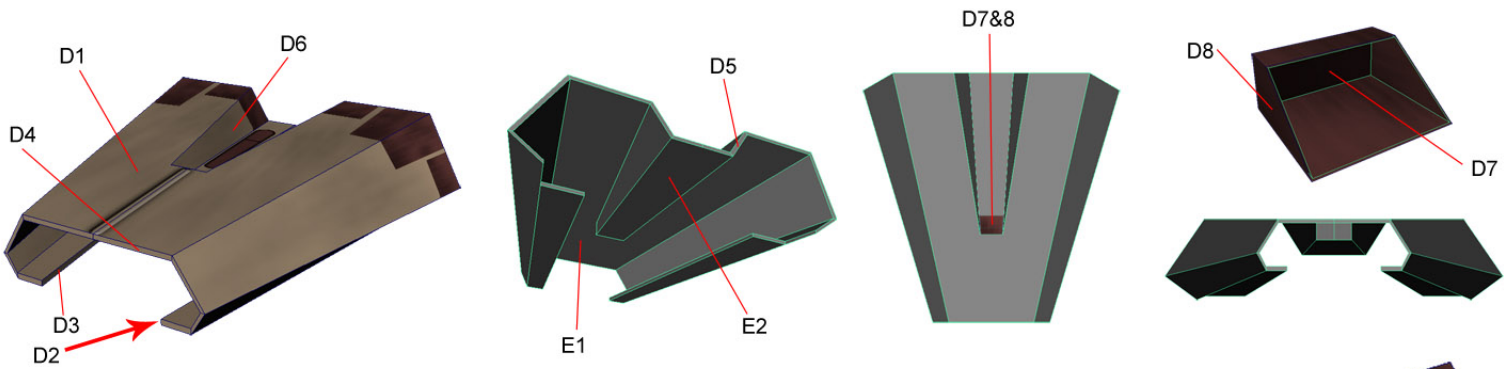
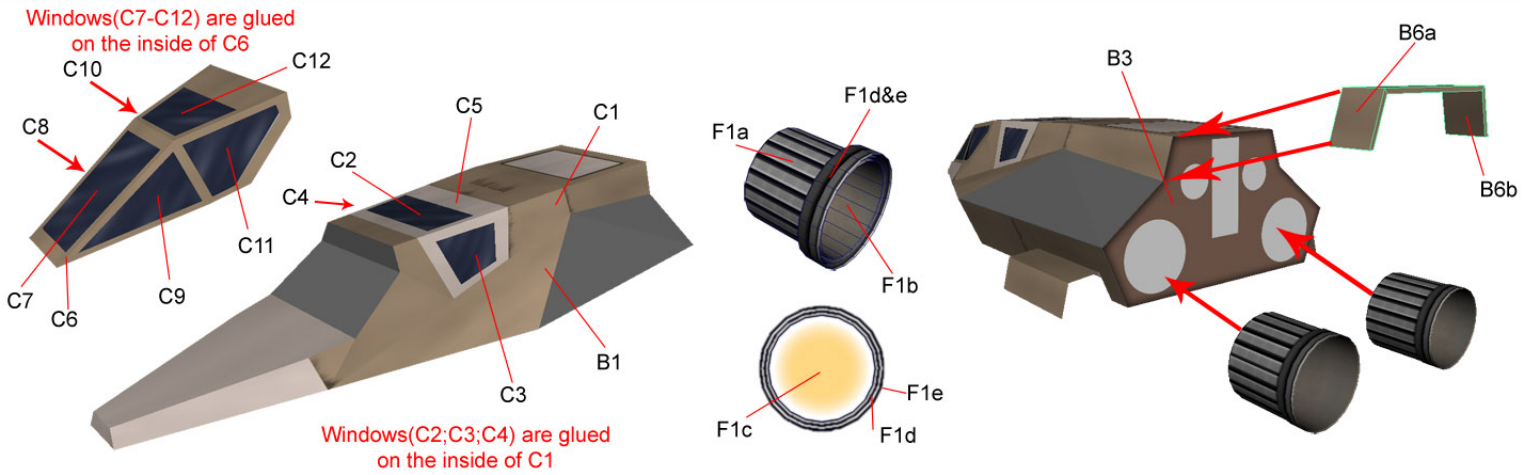
WAR HAWK

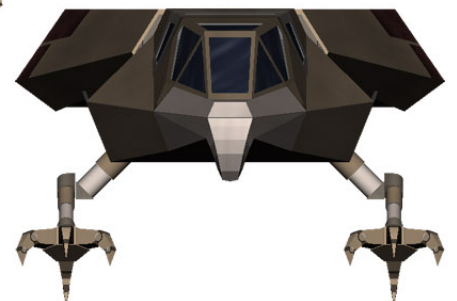
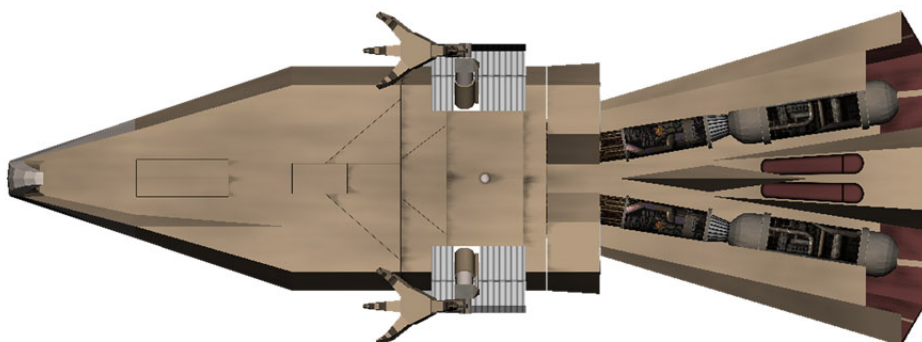
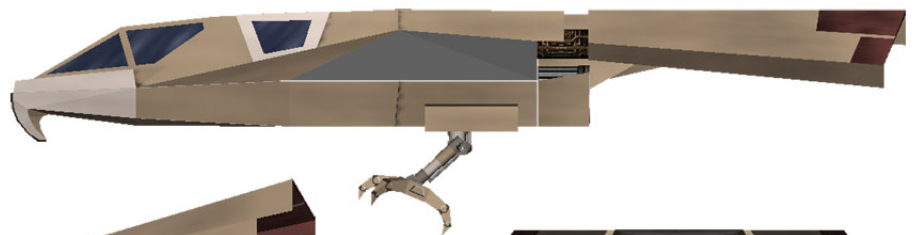
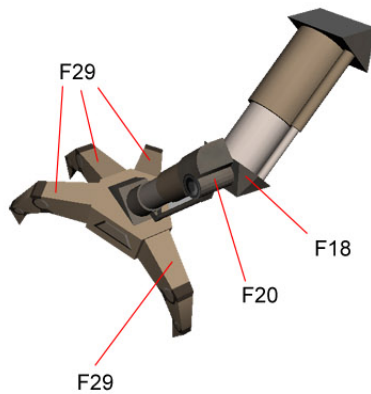
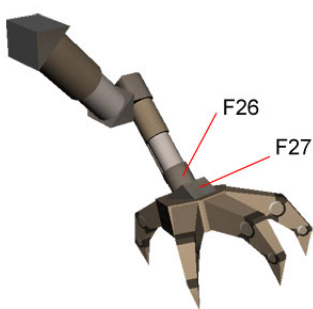
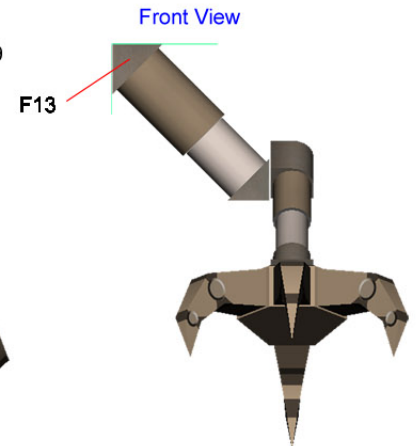
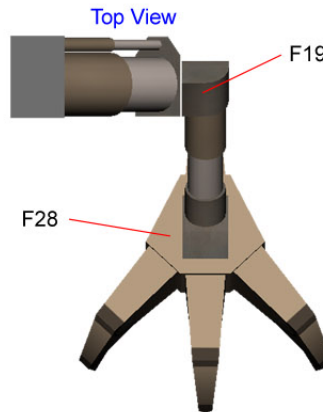
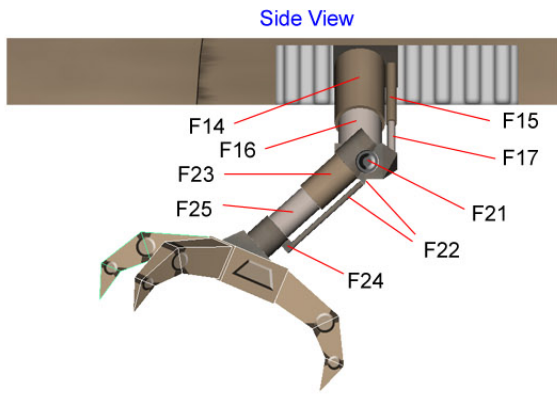
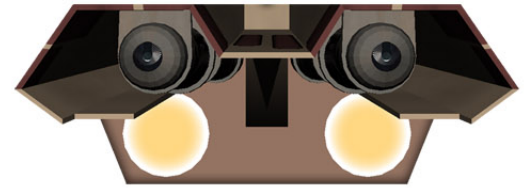
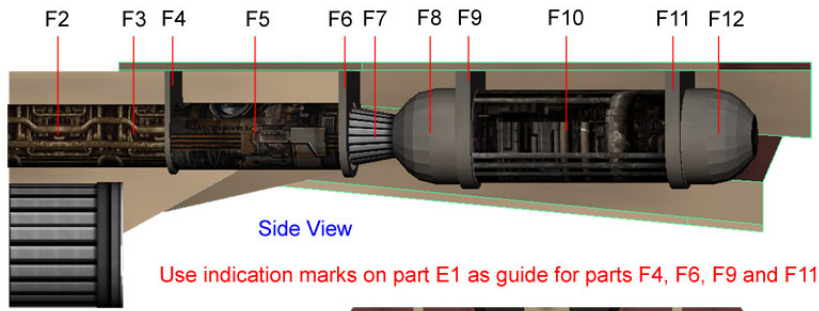
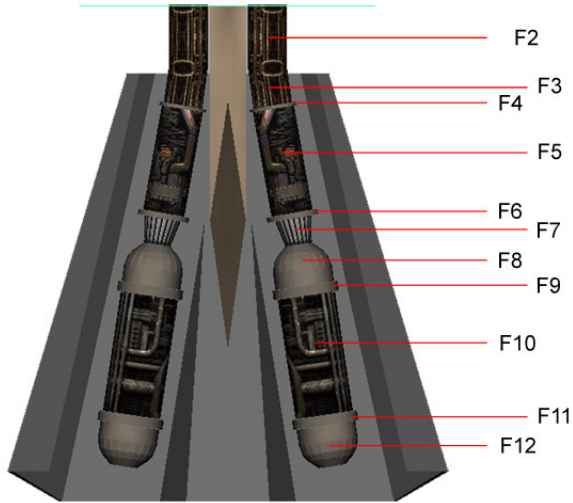


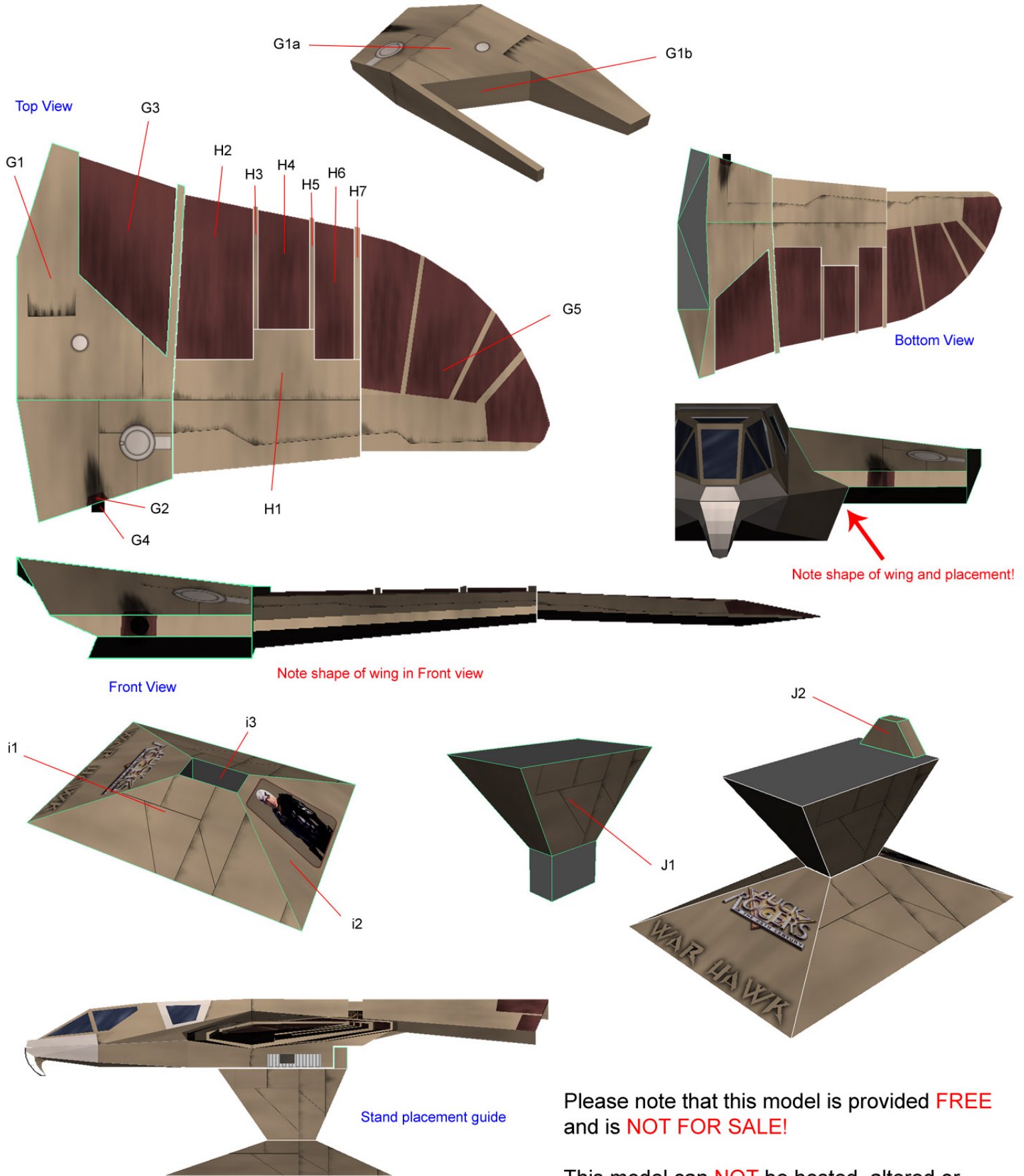
a thunderchild papermodel



For Closed doors, do not use parts A2b, A3b, A4 and A5.
Use scrap pieces of paper and glue 2a & 2b as shown here:







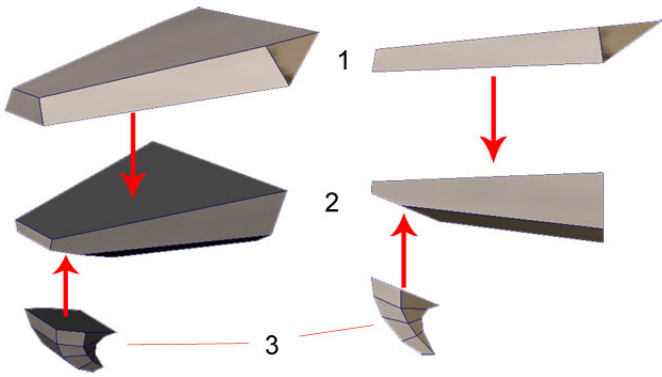
Please note that this model is provided **FREE** and is **NOT FOR SALE!**

This model can **NOT** be hosted, altered or changed without the permission of the designer!

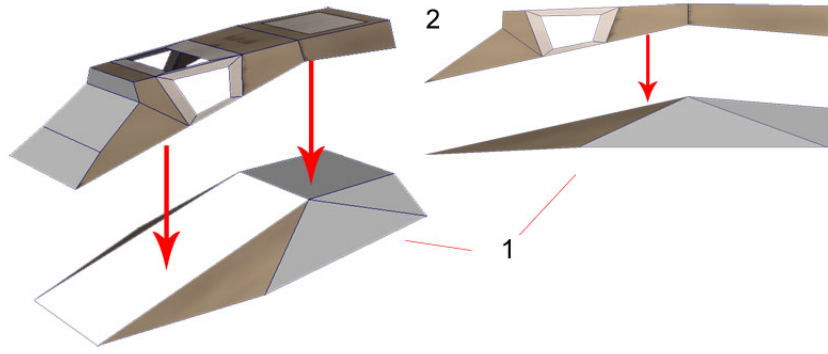
Designer: ThunderChild
Contact: thunderchild_pdp@yahoo.com

Thank you for downloading this model. Enjoy!

Nose alternate

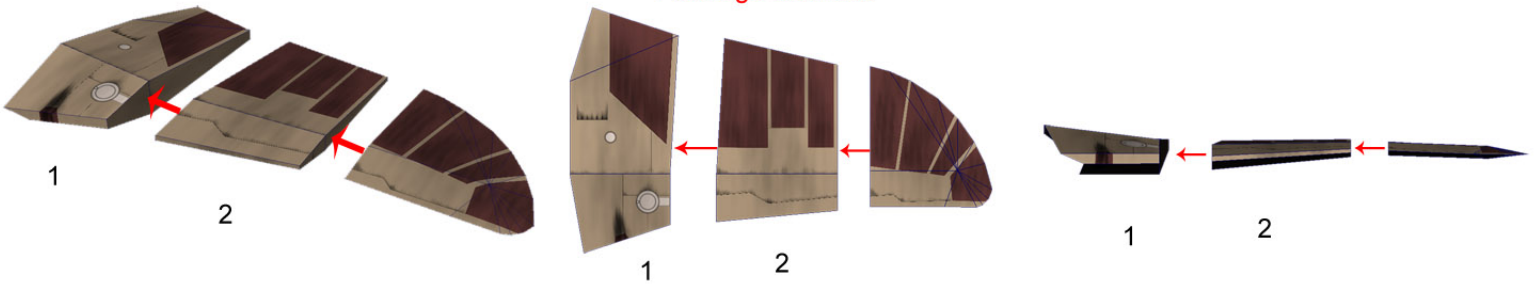


Fuselage alternate

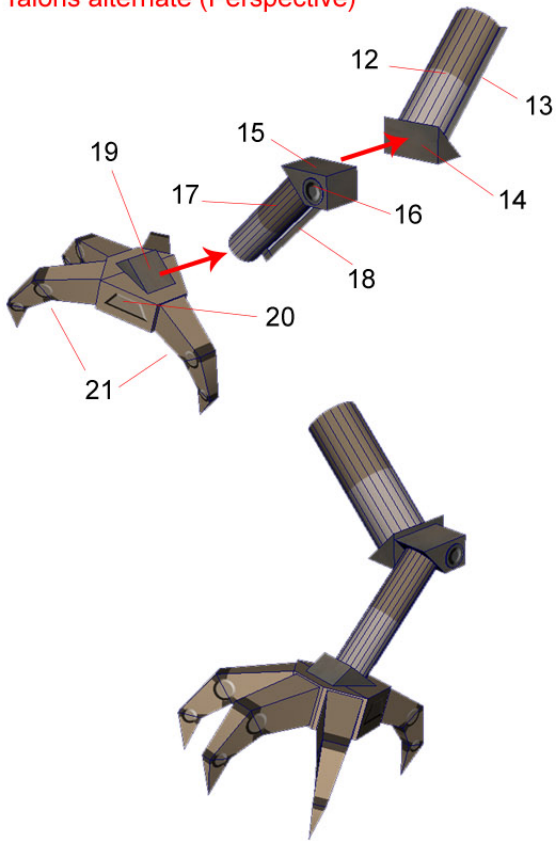


Remember to insert the windows FIRST on the inside of part 2.

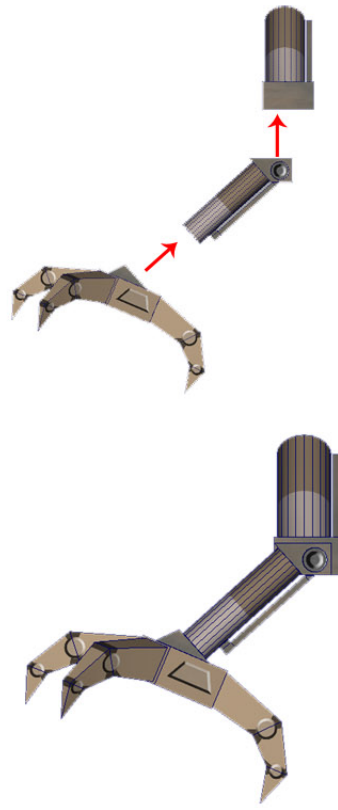
Fuselage alternate



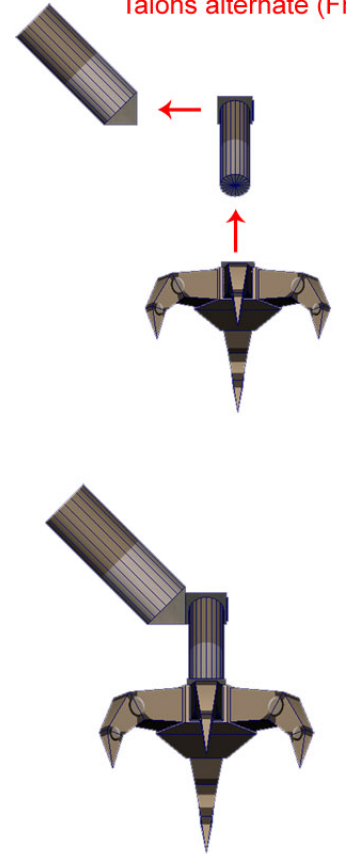
Talons alternate (Perspective)



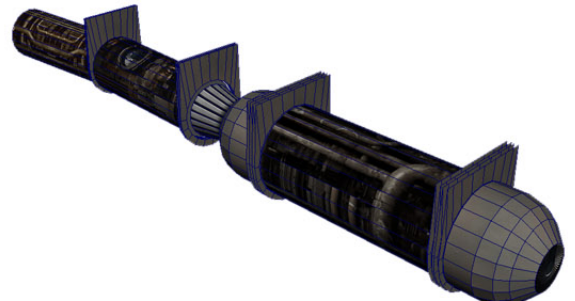
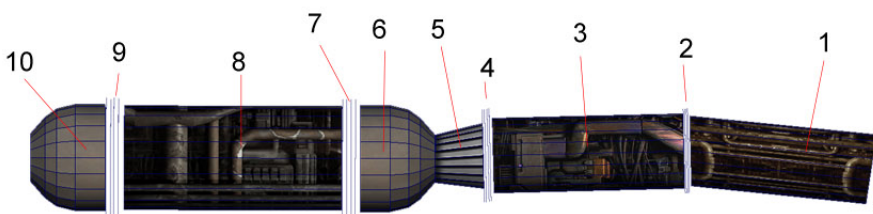
Talons alternate (Side)



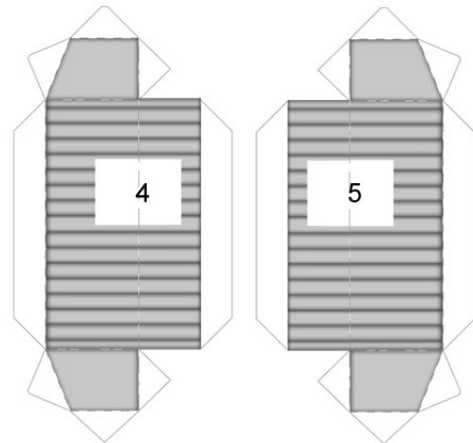
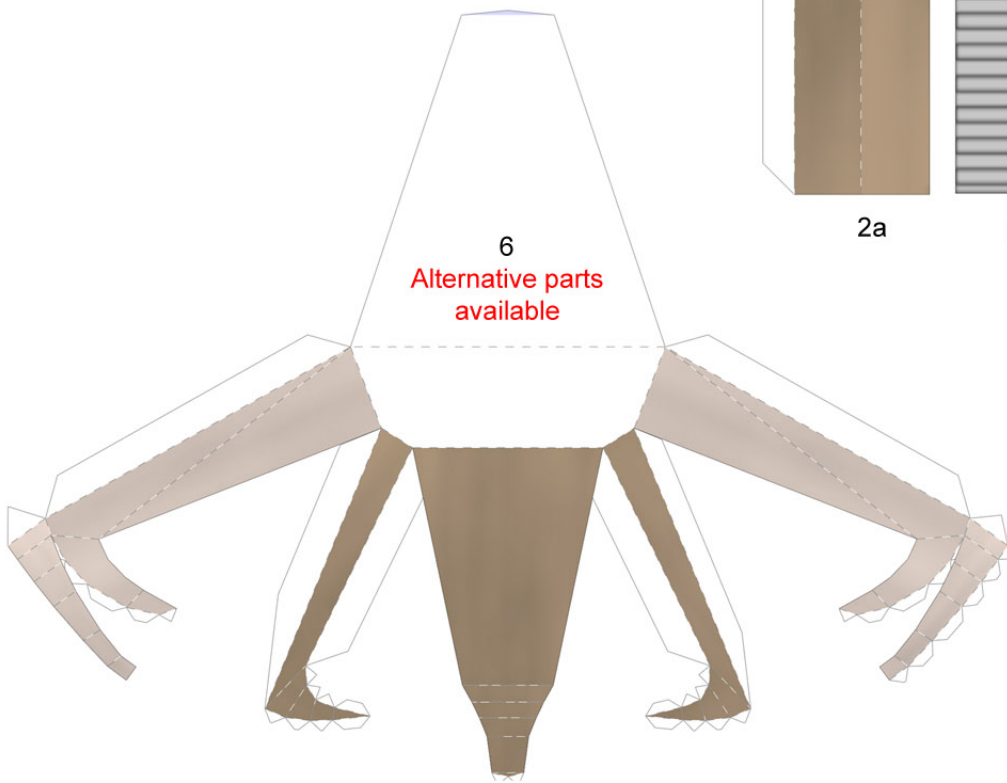
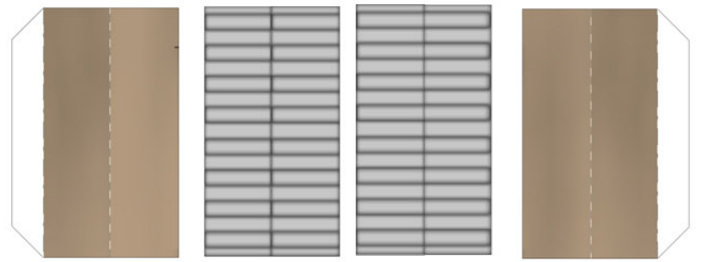
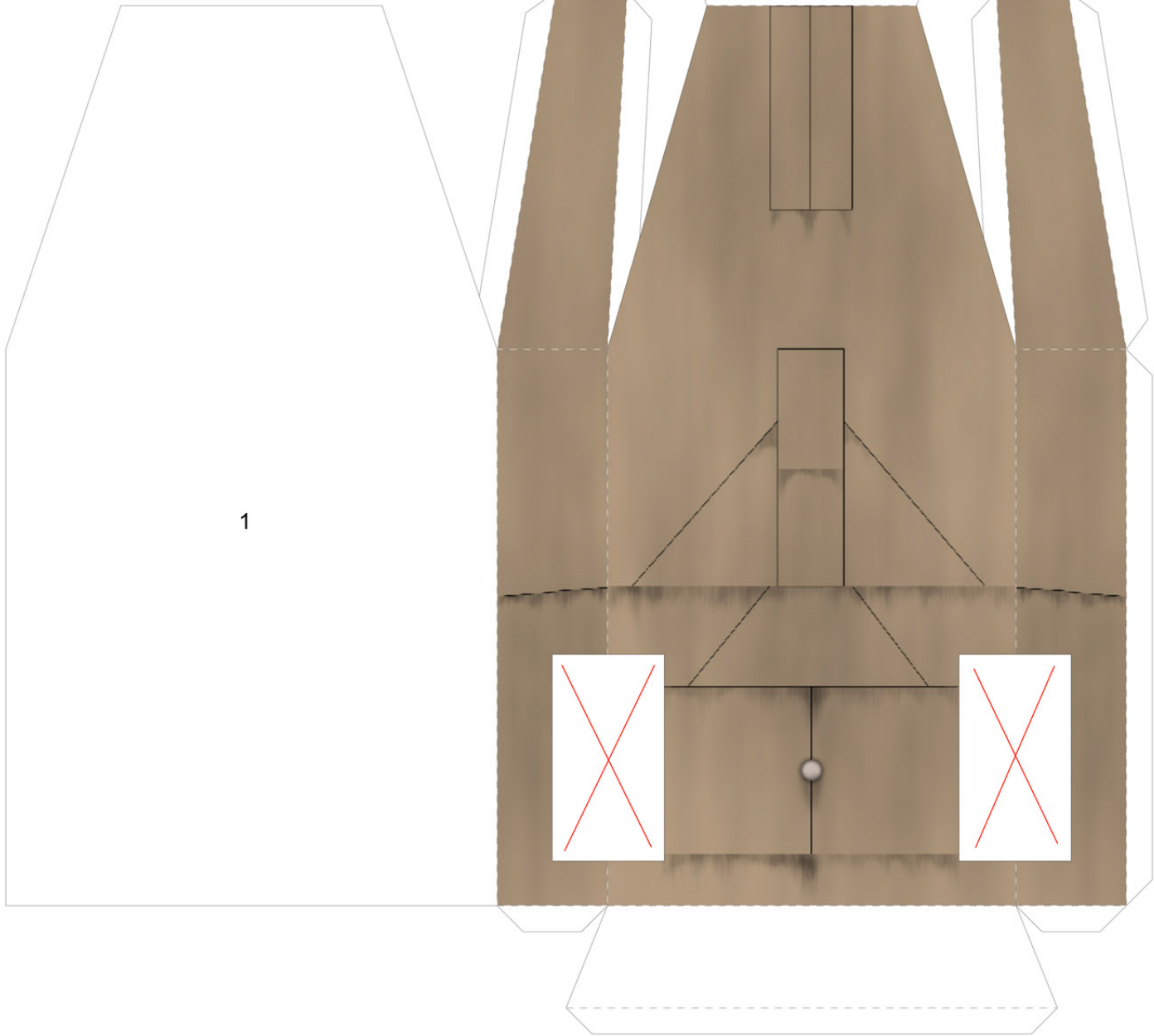
Talons alternate (Front)



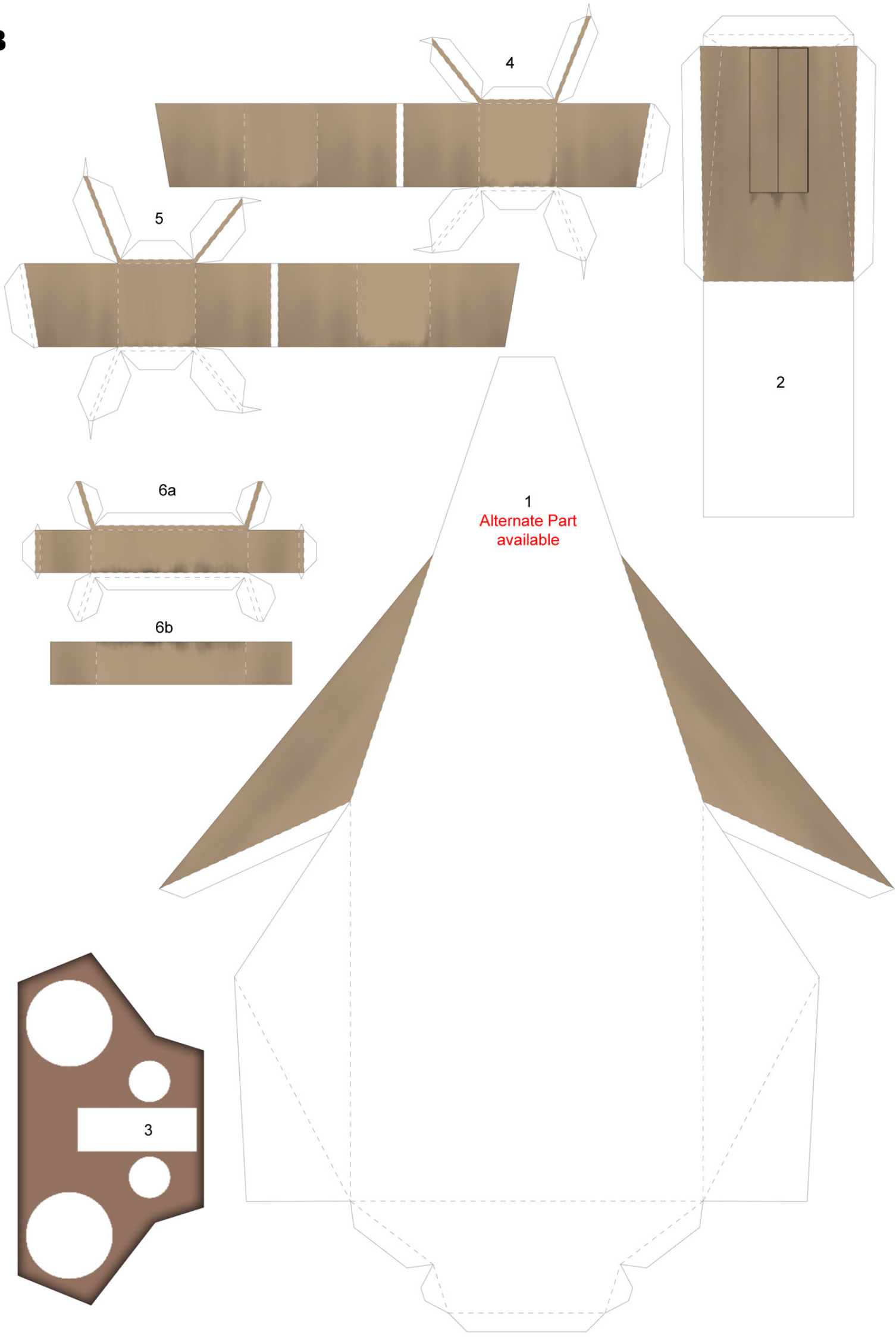
Engines Alternate



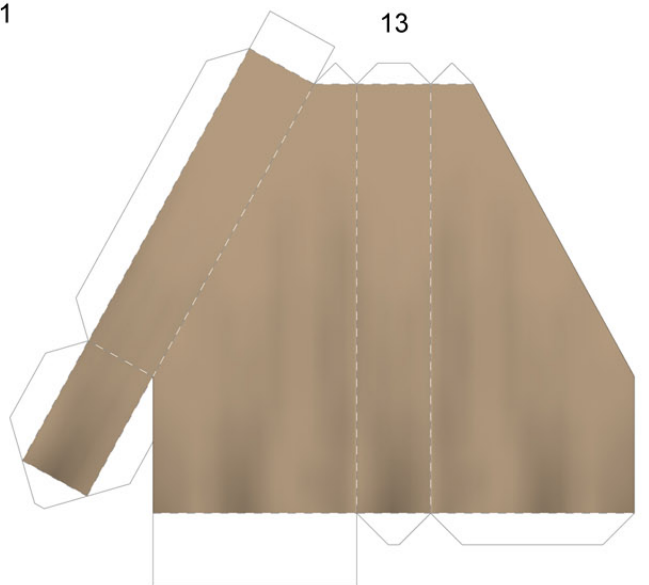
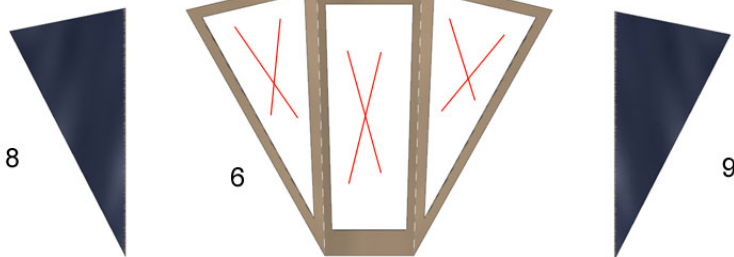
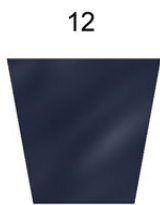
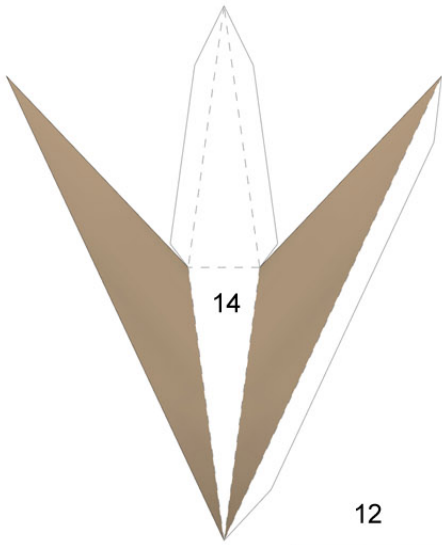
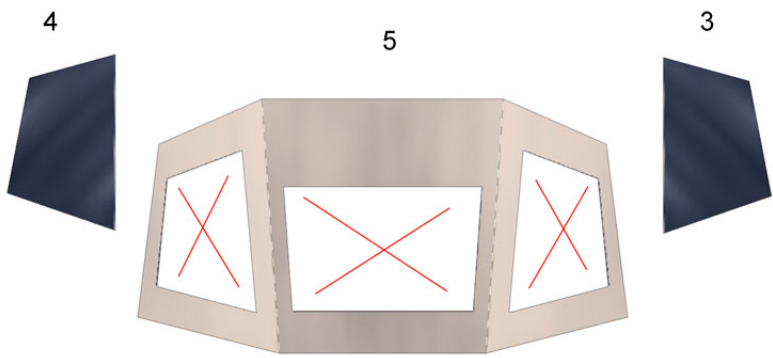
A



B



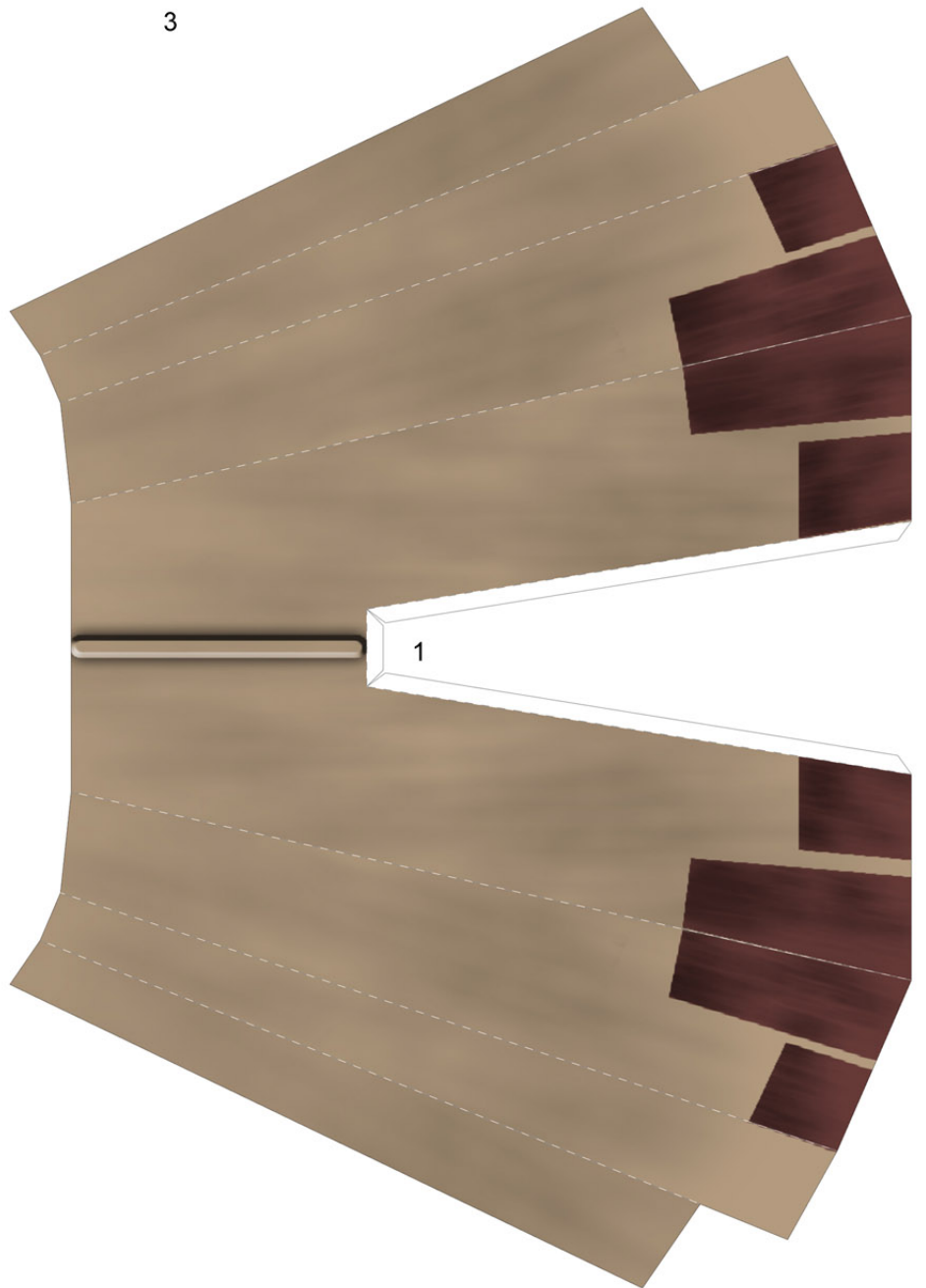
C



D



3



1



7



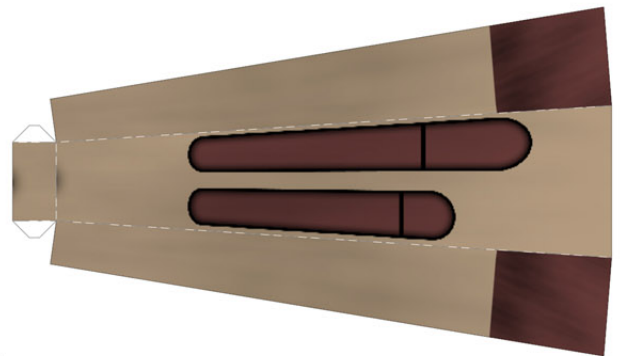
8



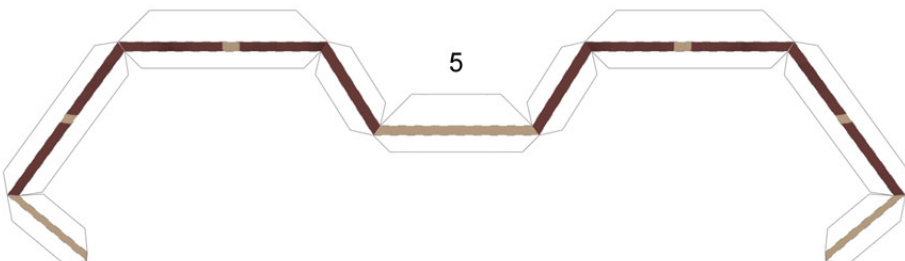
4



2

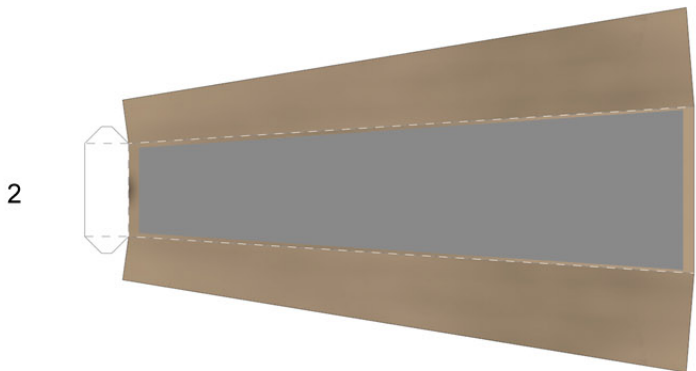
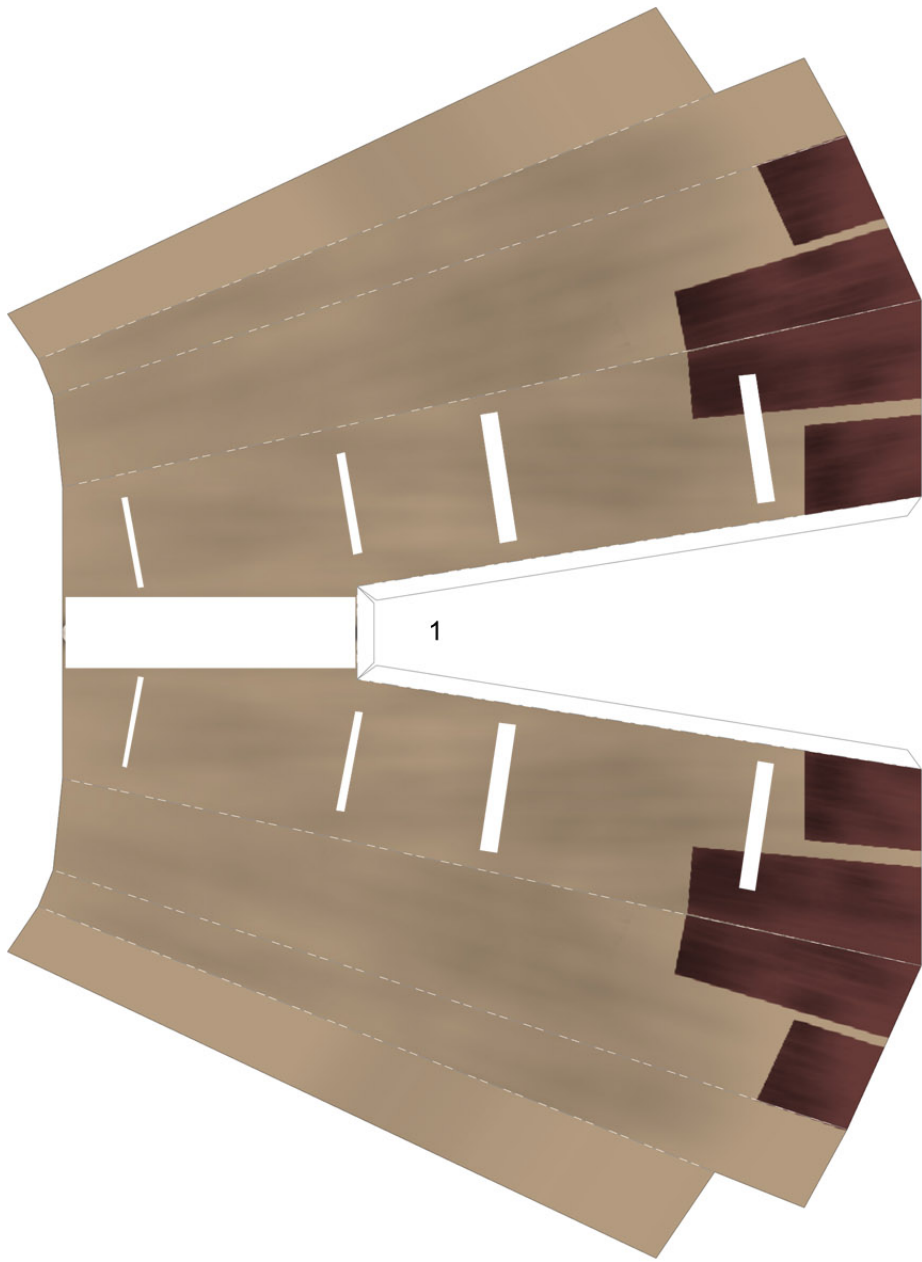


6

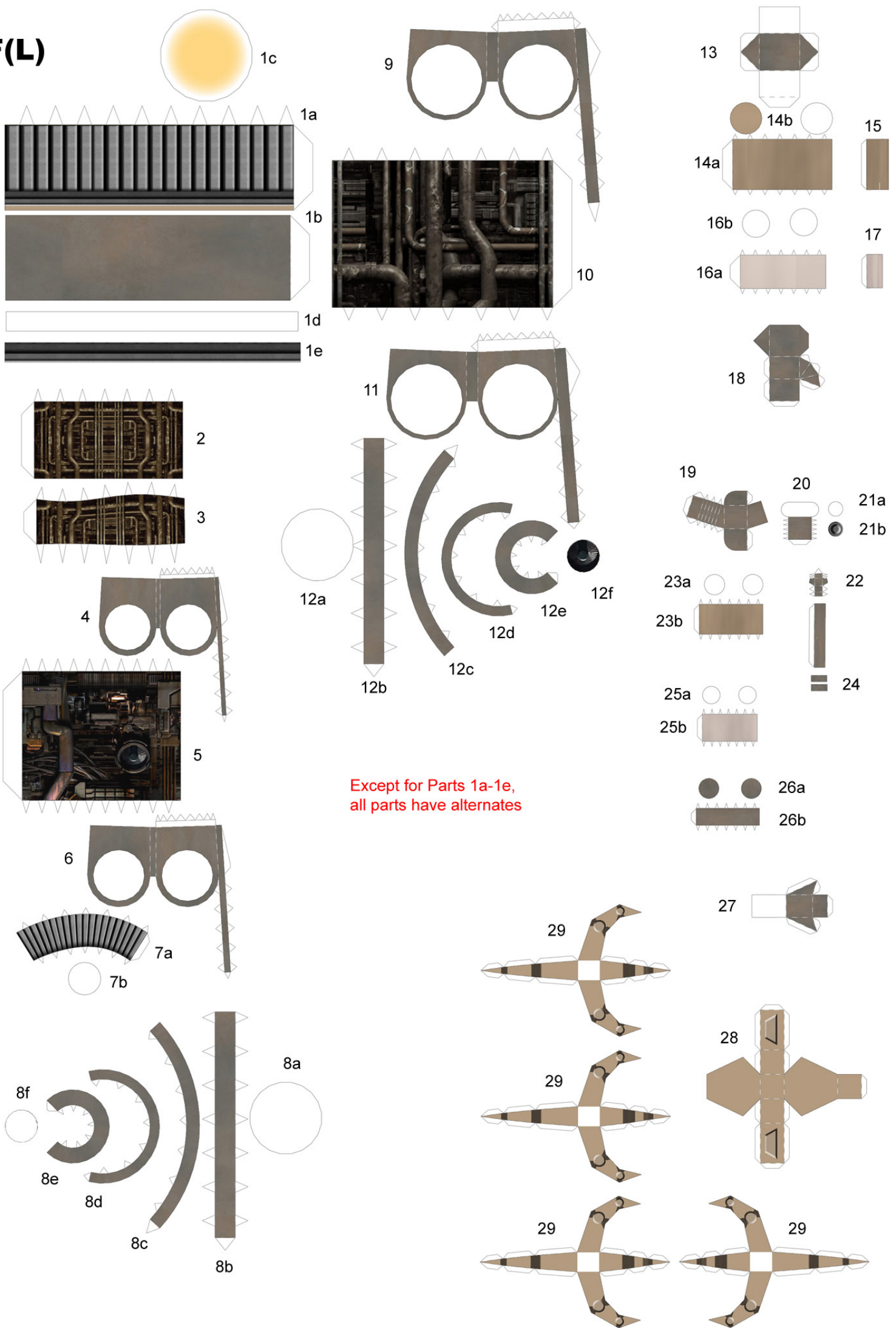


5

E

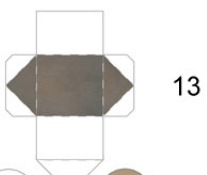


F(L)

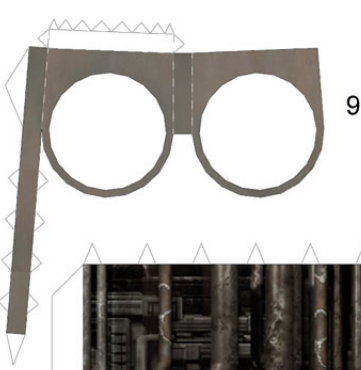


Except for Parts 1a-1e,
all parts have alternates

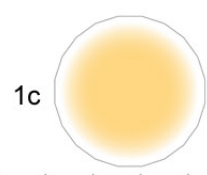
F(R)



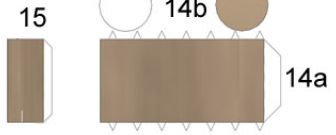
13



9

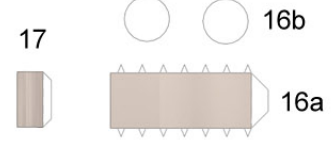


1c



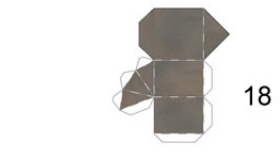
14a

14b

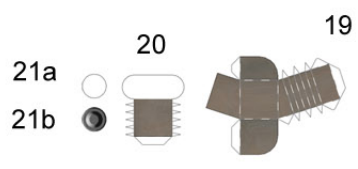


16a

16b



18

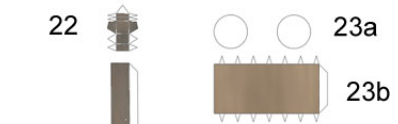


19

20

21a

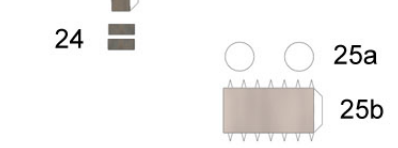
21b



22

23a

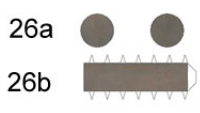
23b



24

25a

25b

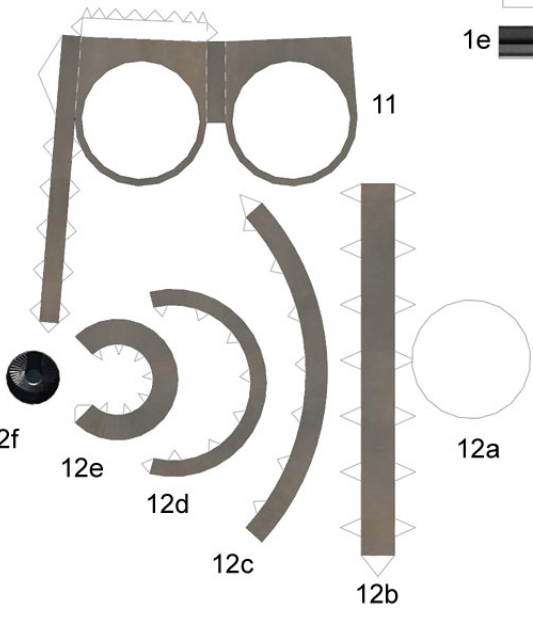


26a

26b



10



11

12a

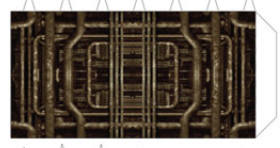
12b

12c

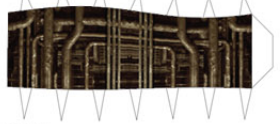
12d

12e

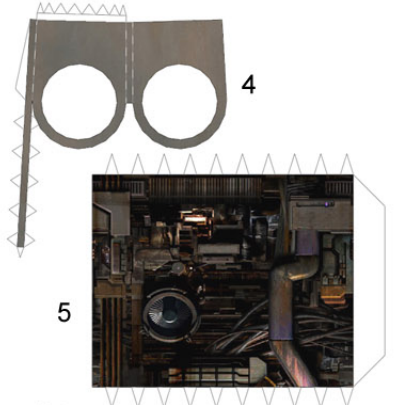
12f



2

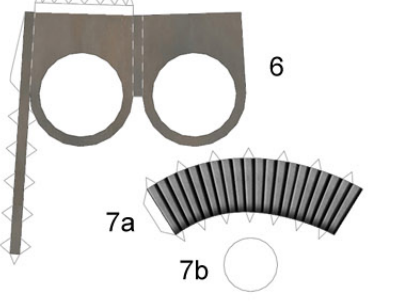


3



4

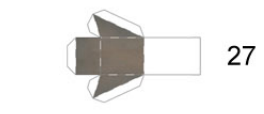
5



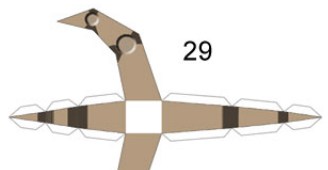
6

7a

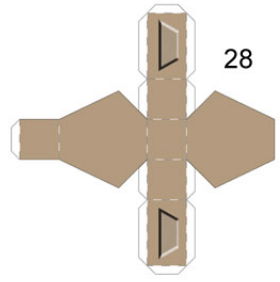
7b



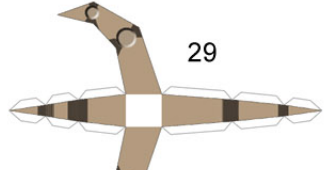
27



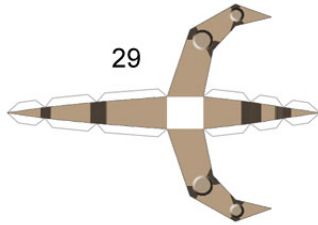
29



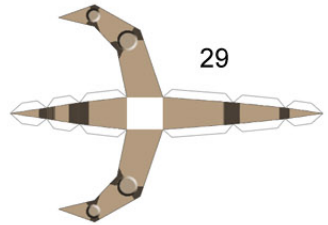
28



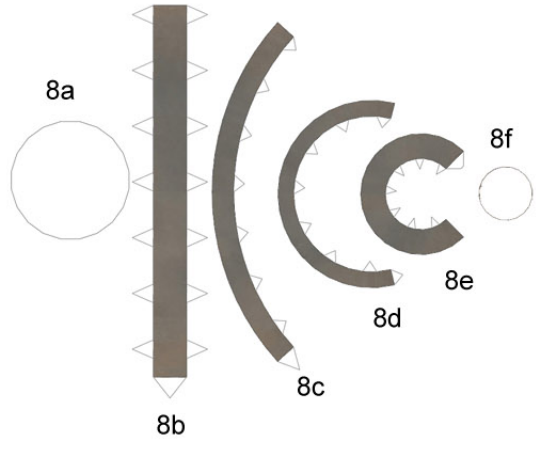
29



29



29



8a

8b

8c

8d

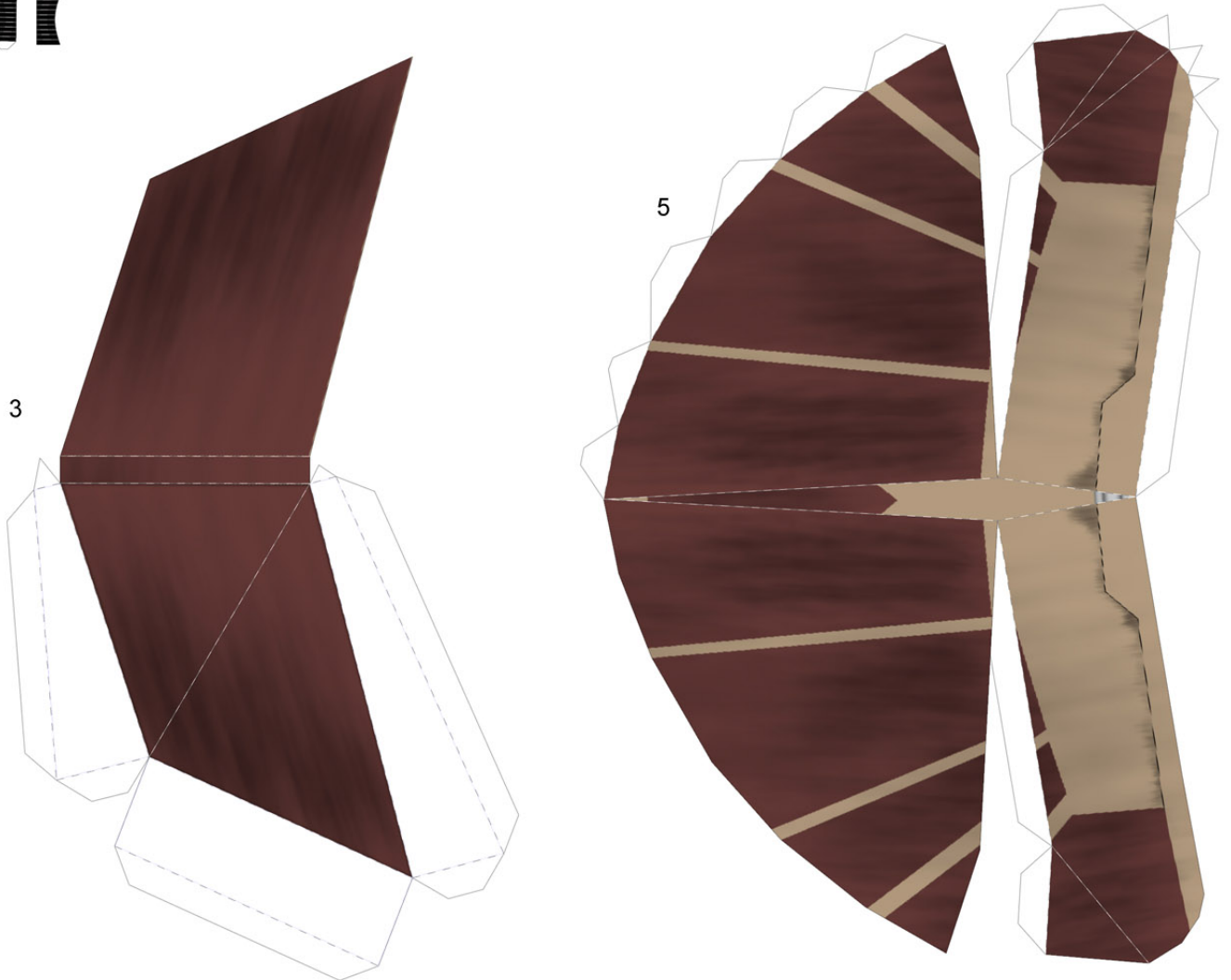
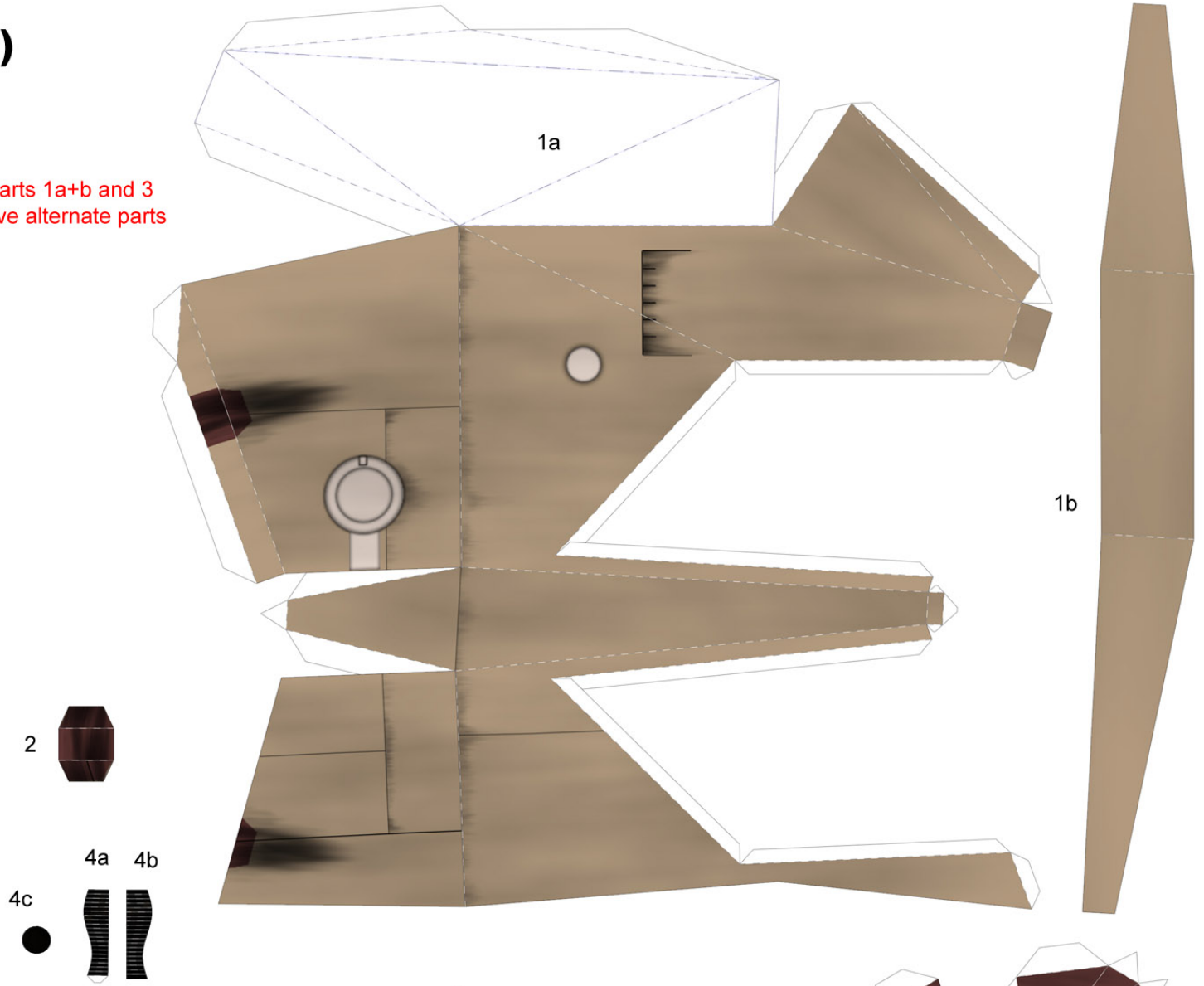
8e

8f

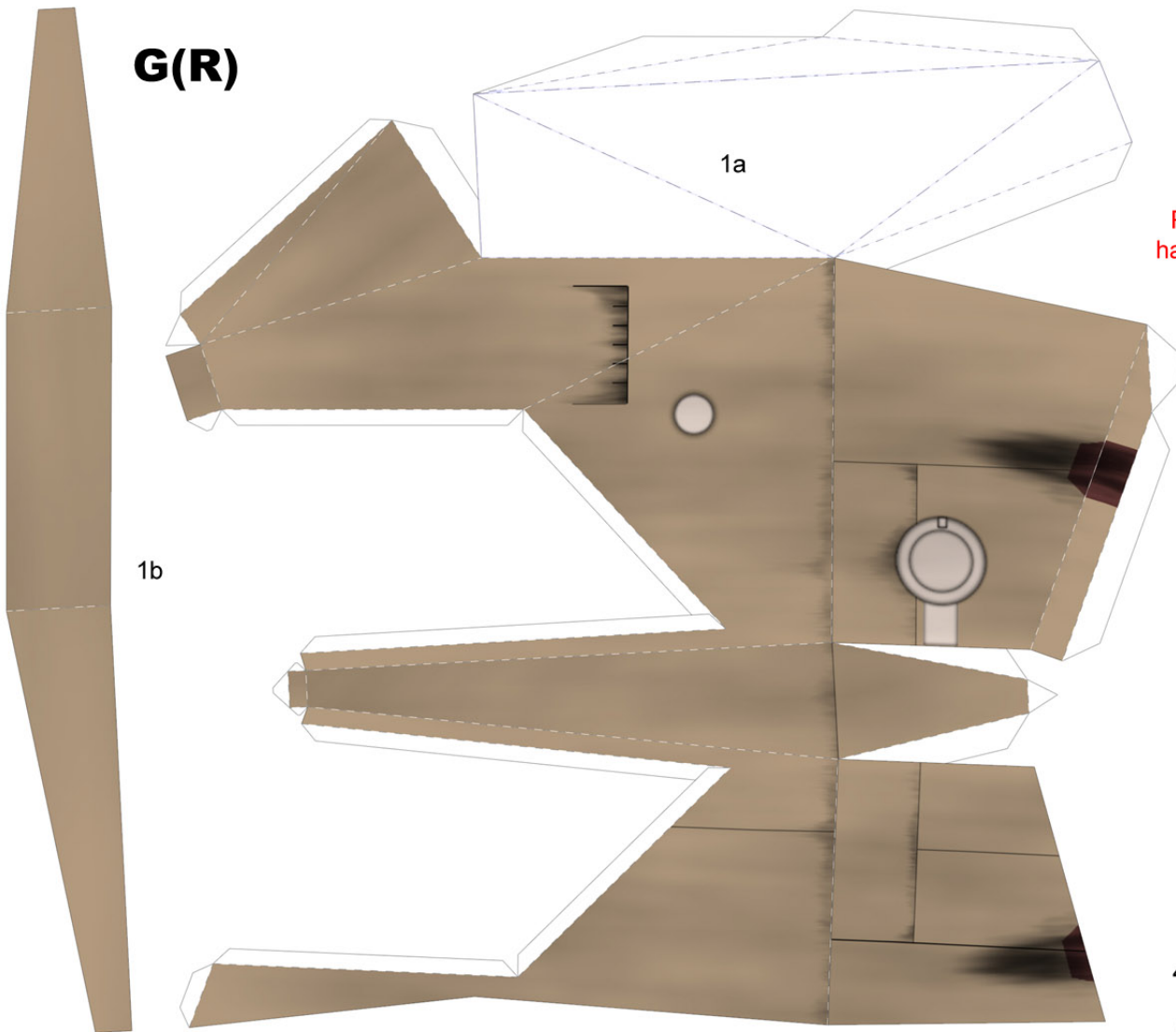
Except for Parts 1a-1e,
all parts have alternates

G(L)

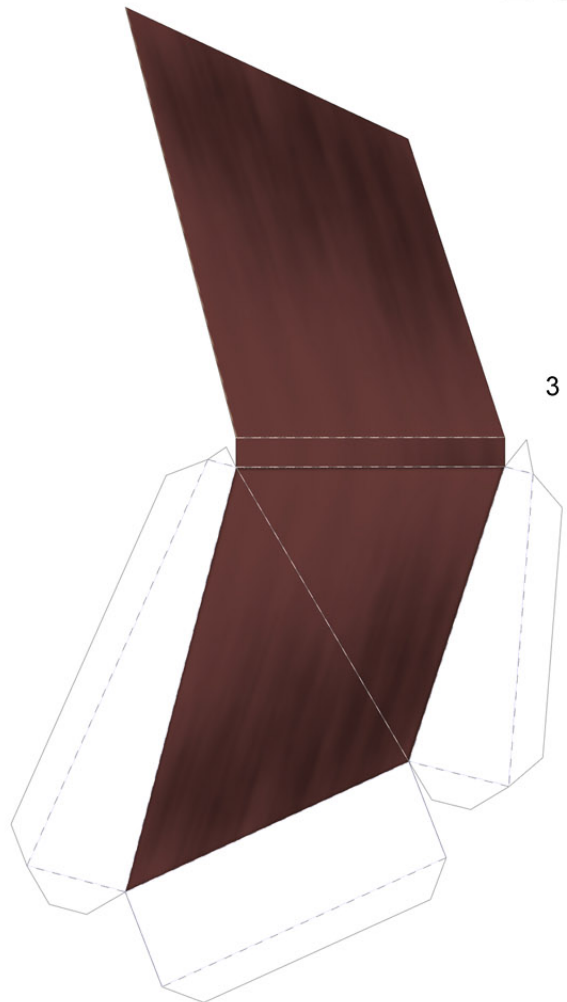
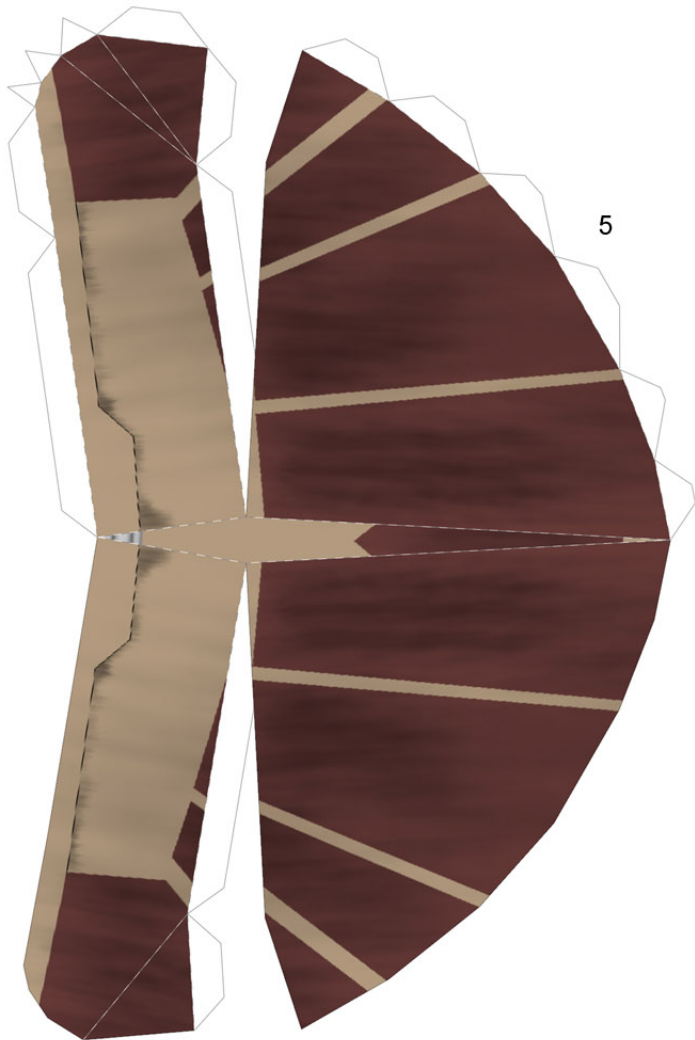
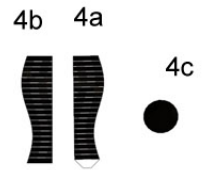
Parts 1a+b and 3
have alternate parts



G(R)

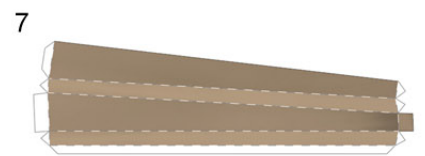
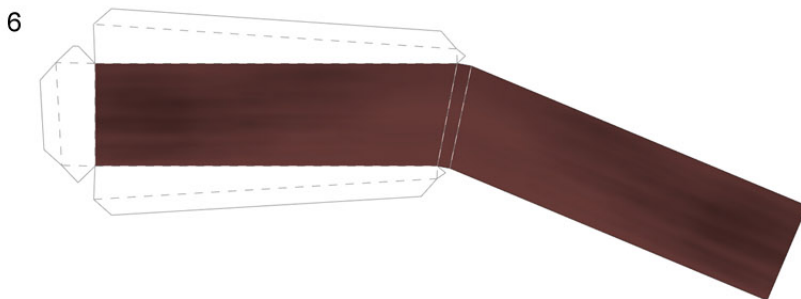
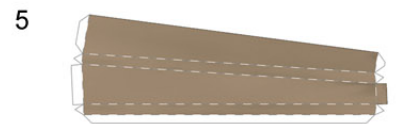
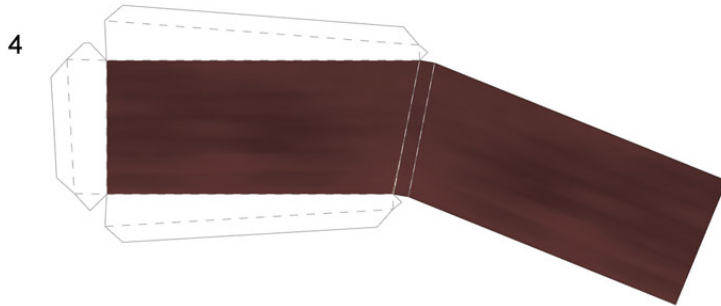
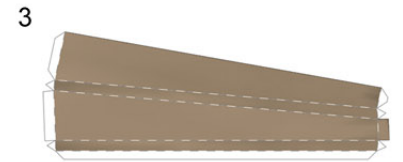
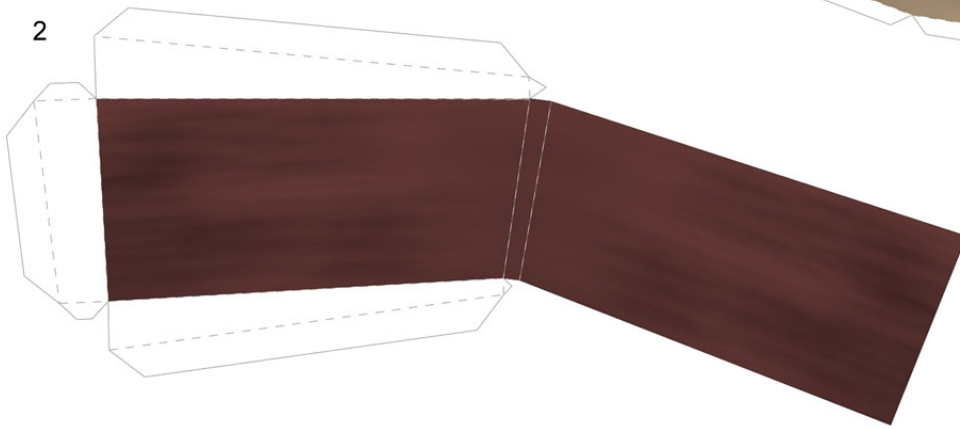
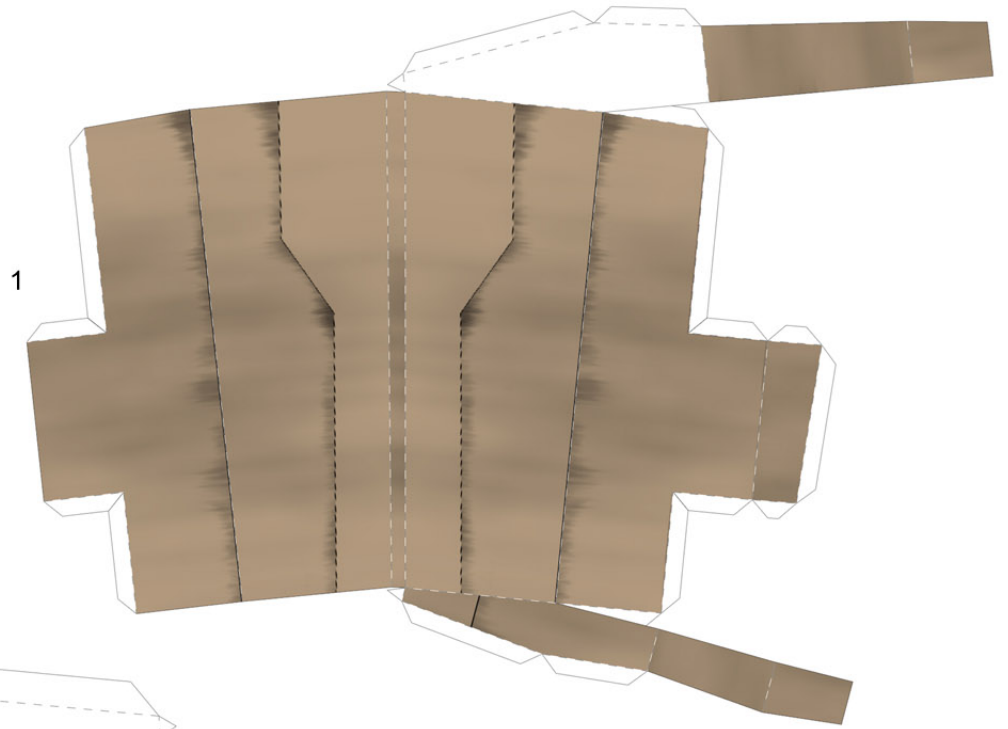


Parts 1a+b and 3 have alternate parts



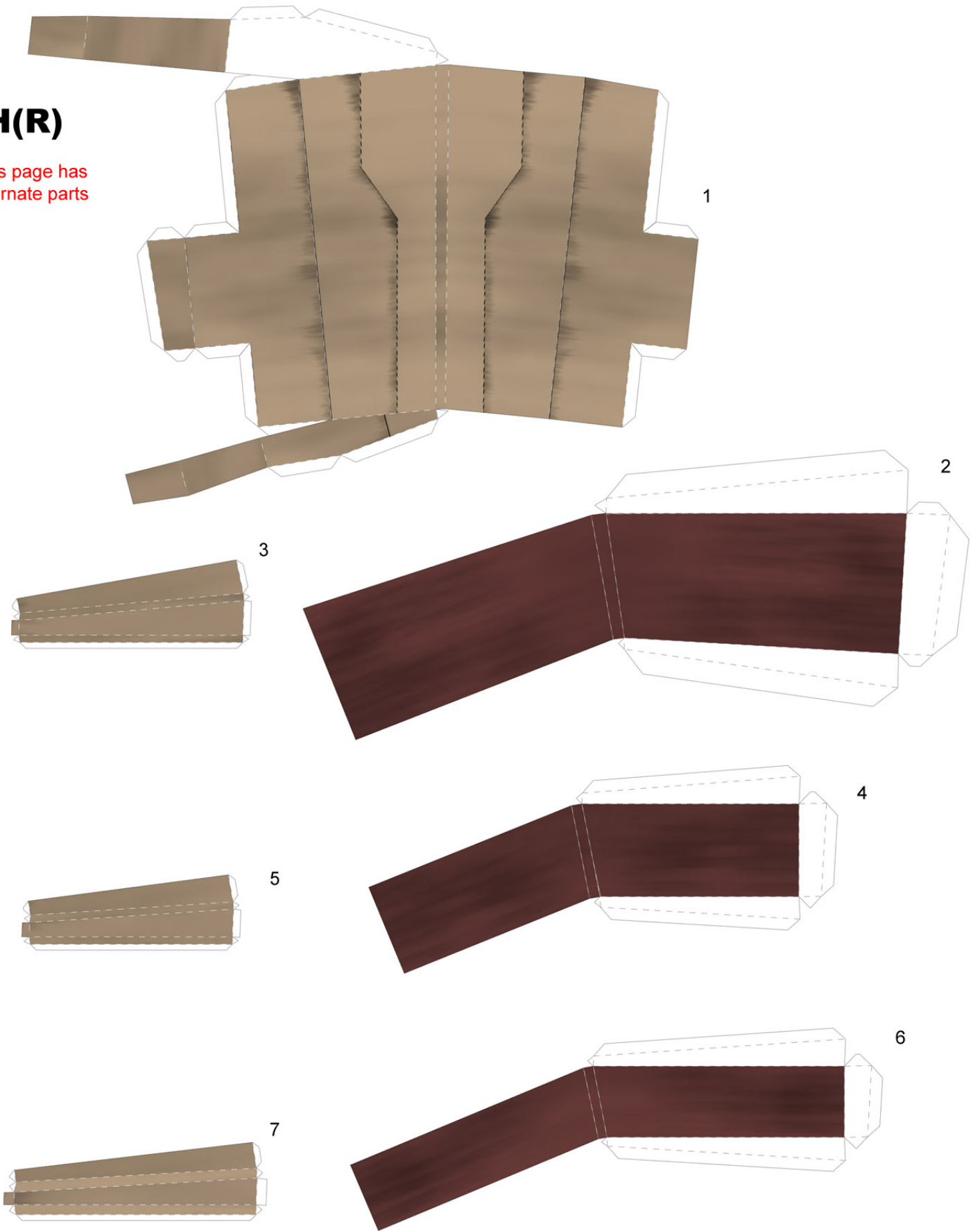
H(L)

This page has
alternate parts



H(R)

This page has alternate parts



2

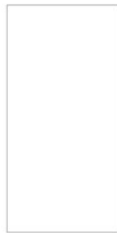


1

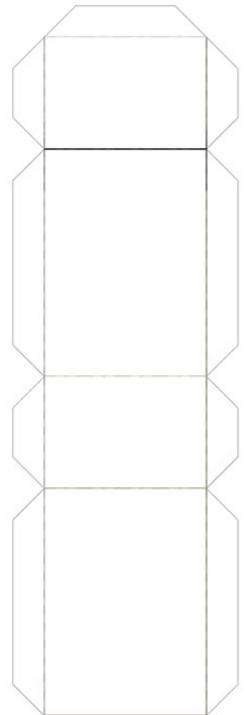


WAR HAWK

model designed
By:
thunderchild



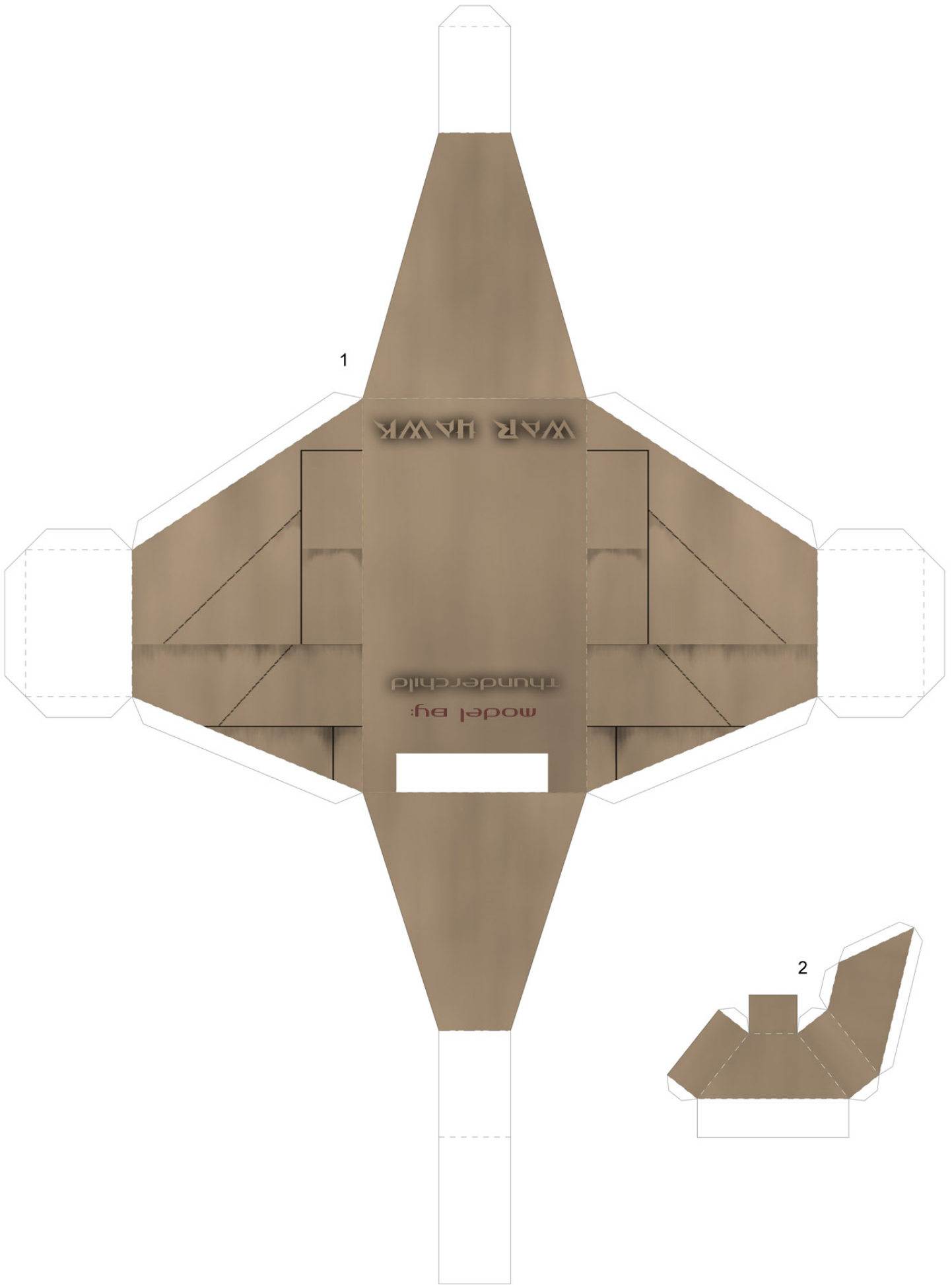
3



This model is provided **FREE**
and is **NOT** for sale!

thunderchild_pdp@yahoo.com

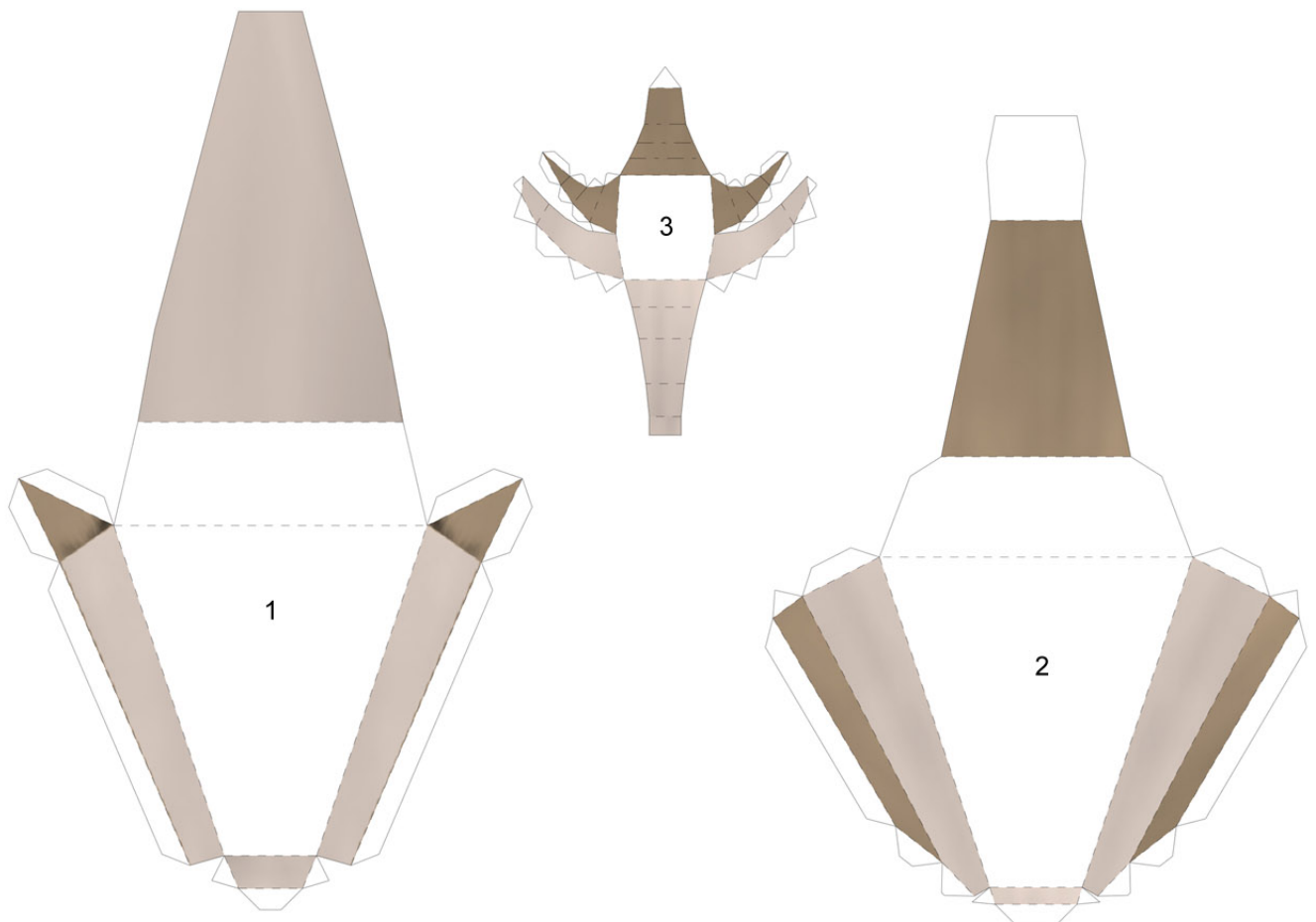
J



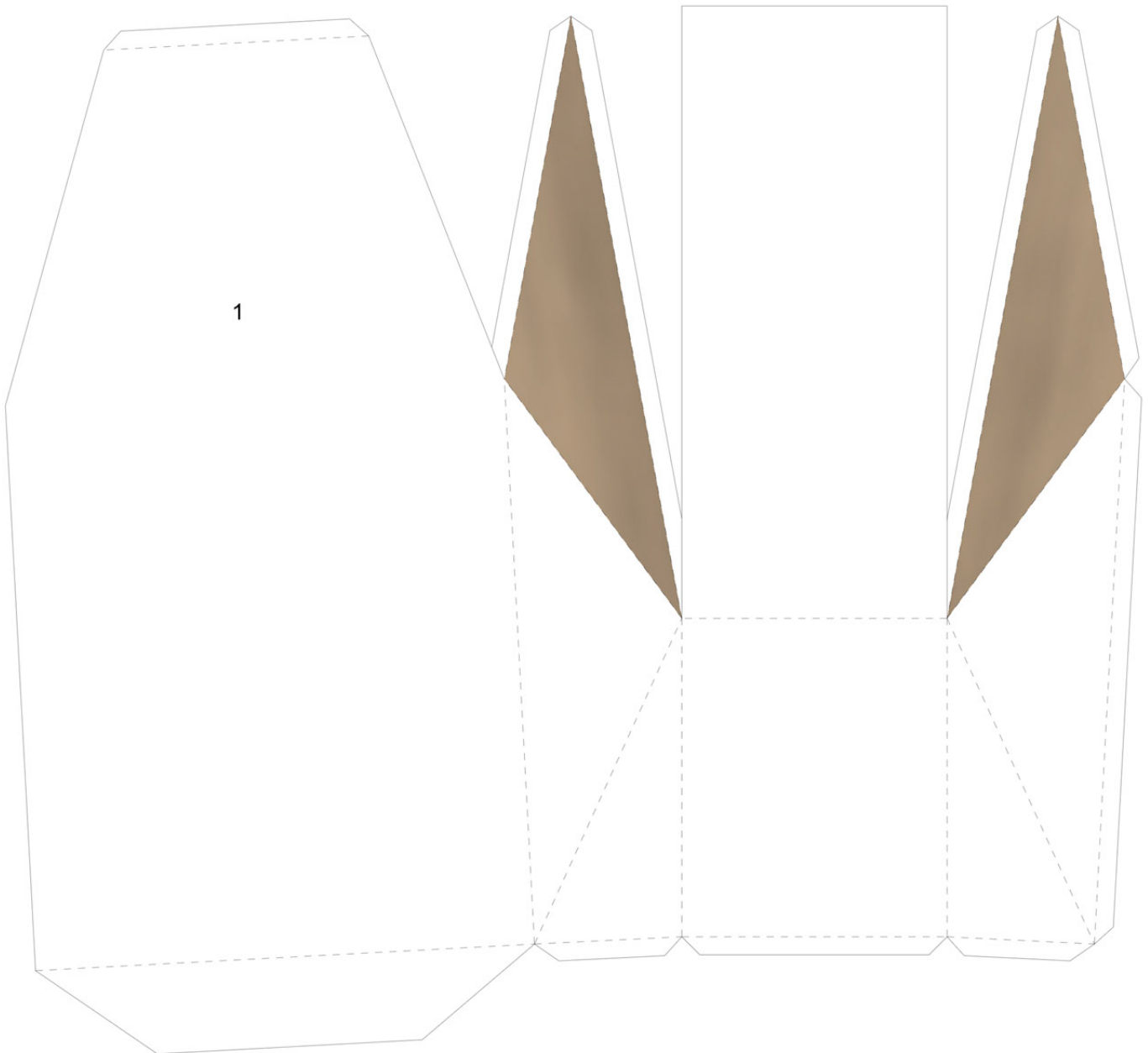
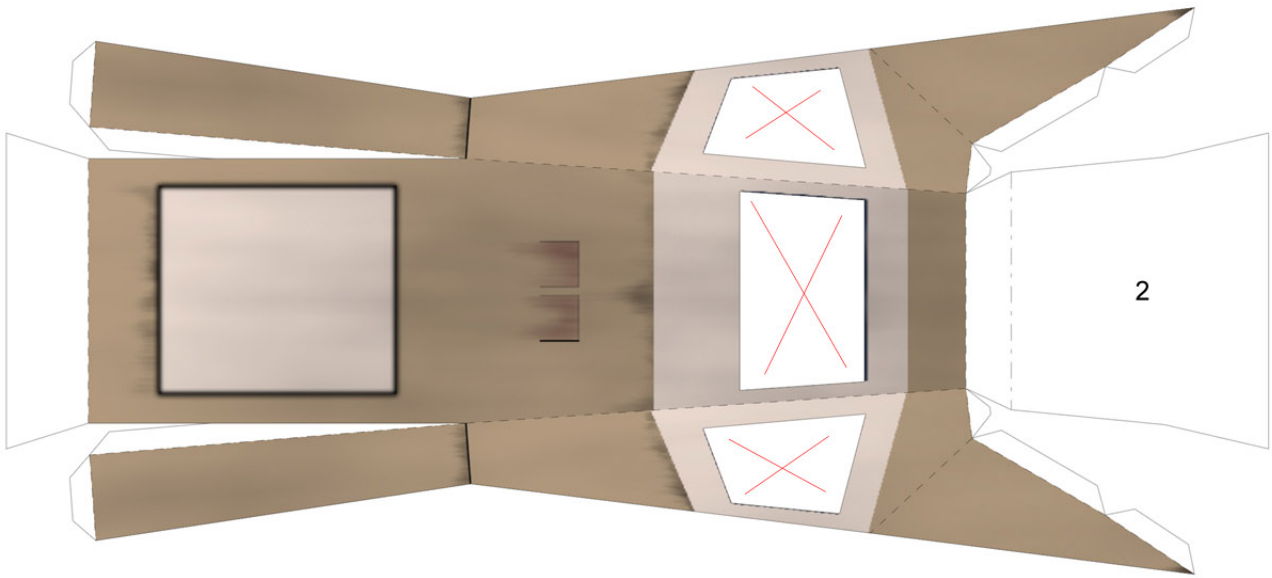
ALTERNATE PART SHEETS

Some parts on the model might prove difficult to build, so I have created these three sheets of ALTERNATE parts that should be a little easier to build. Original parts that can be replaced by these, are identified on the original sheets.

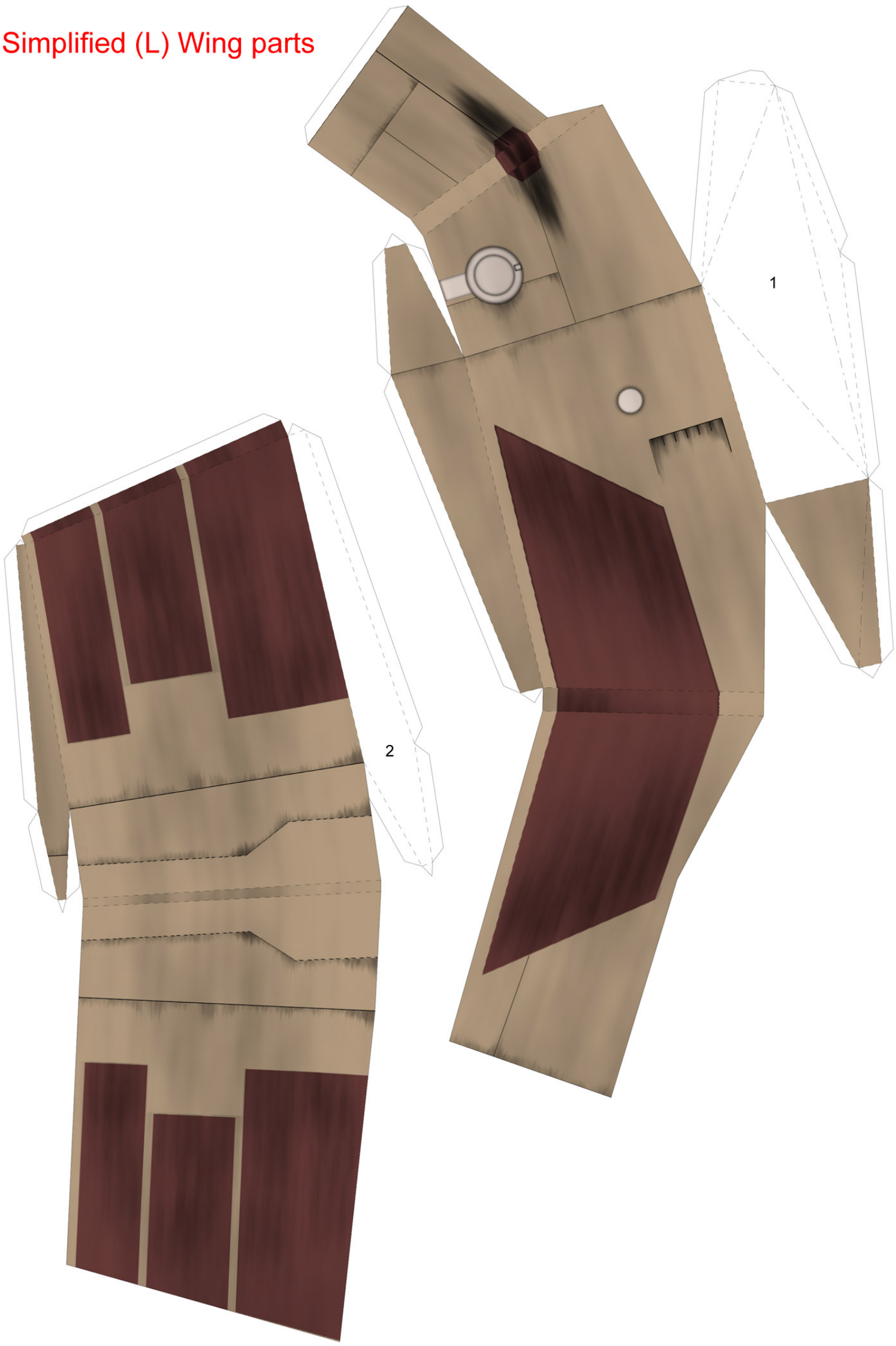
Simplified nose parts



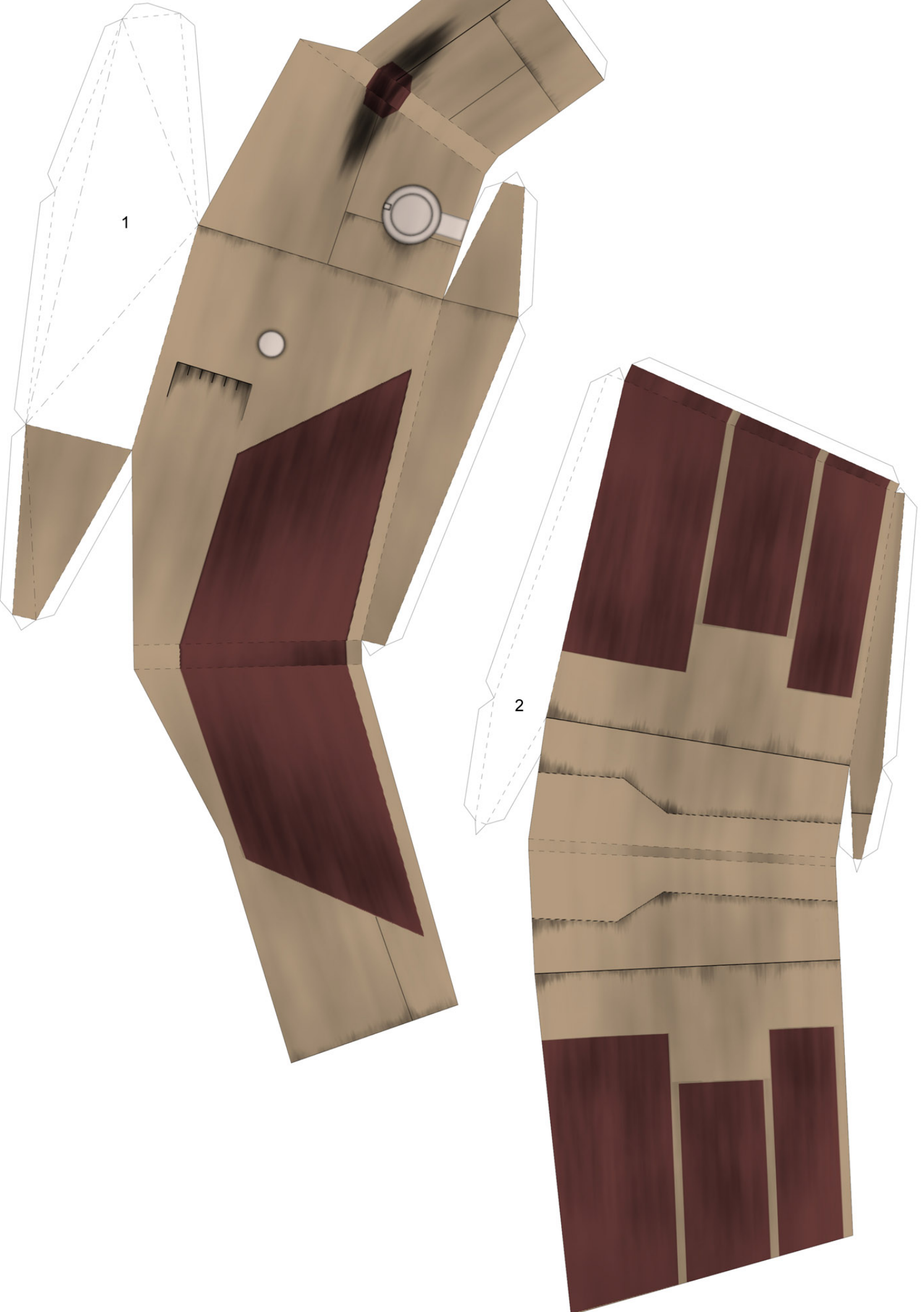
Simplified upper fuselage parts

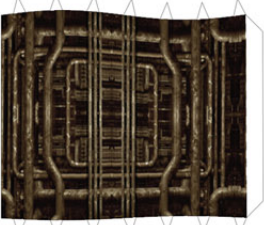


Simplified (L) Wing parts

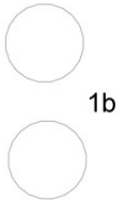


Simplified (R) Wing parts

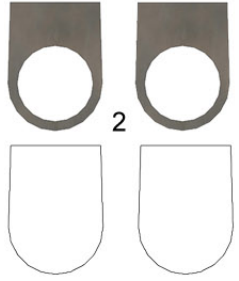




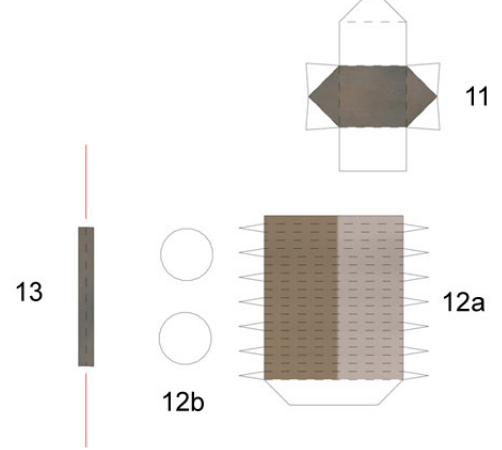
1a



1b

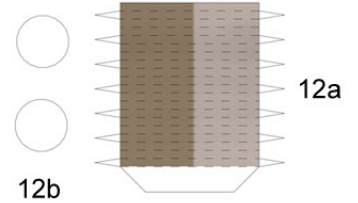


2



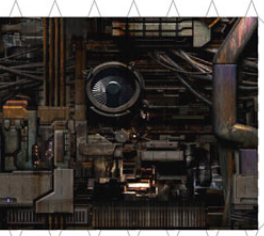
13

11

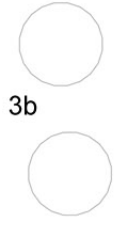


12a

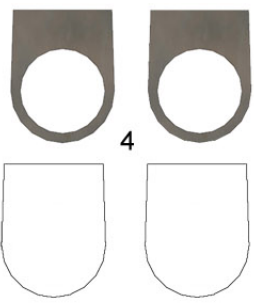
12b



3a



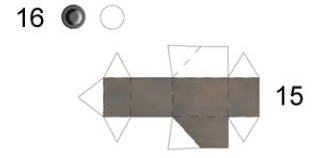
3b



4

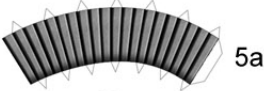


14



15

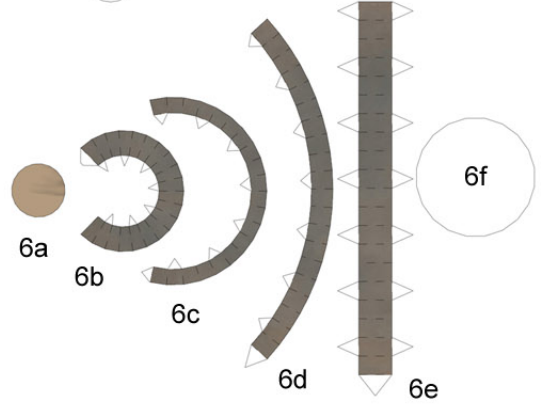
16



5a



5b



6a

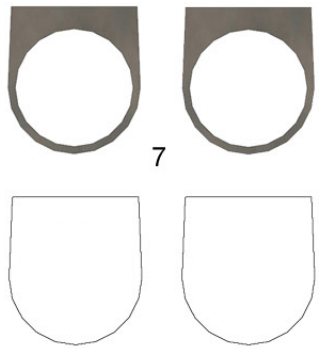
6b

6c

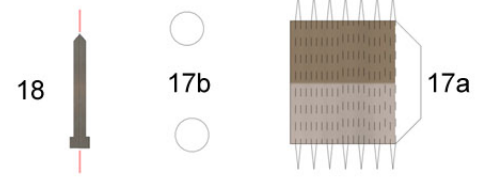
6d

6e

6f

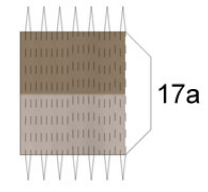


7



18

17b



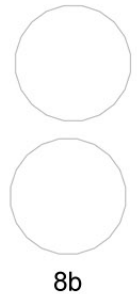
17a



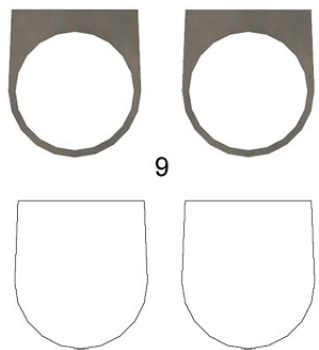
19



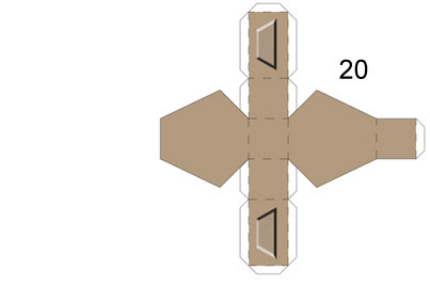
8a



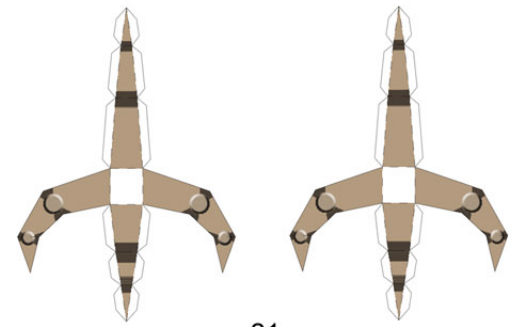
8b



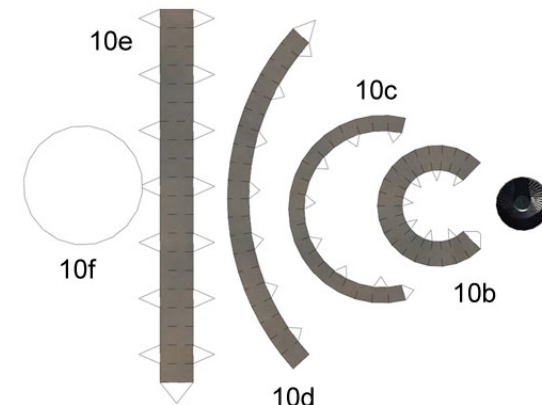
9



20



21



10e

10c

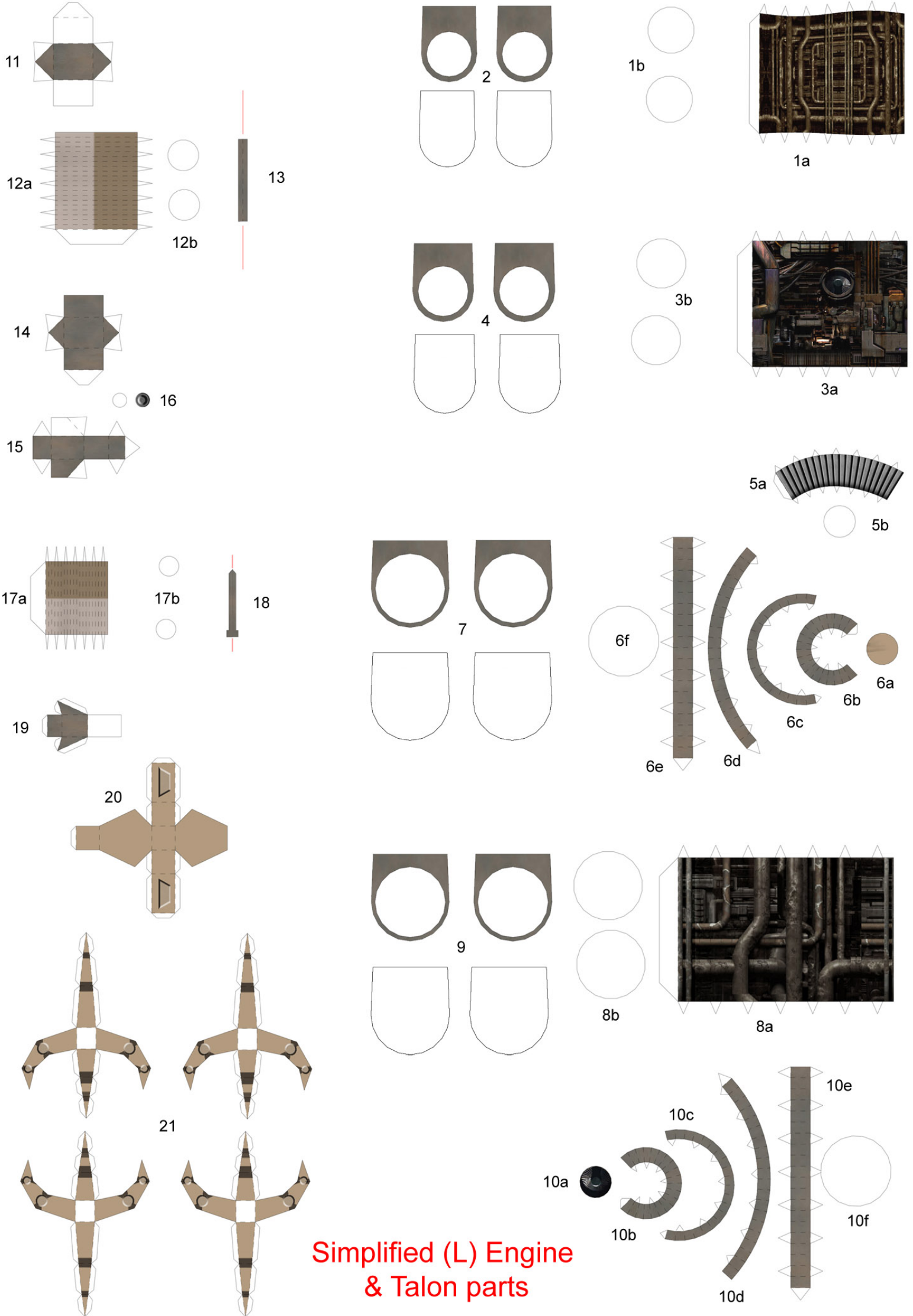
10b

10a

10f

10d

Simplified (L) Engine & Talon parts



**Simplified (L) Engine
& Talon parts**